

Antarctic Logistics & Expeditions

Tools used by ALE Meteorology Department

Celine Nyhan

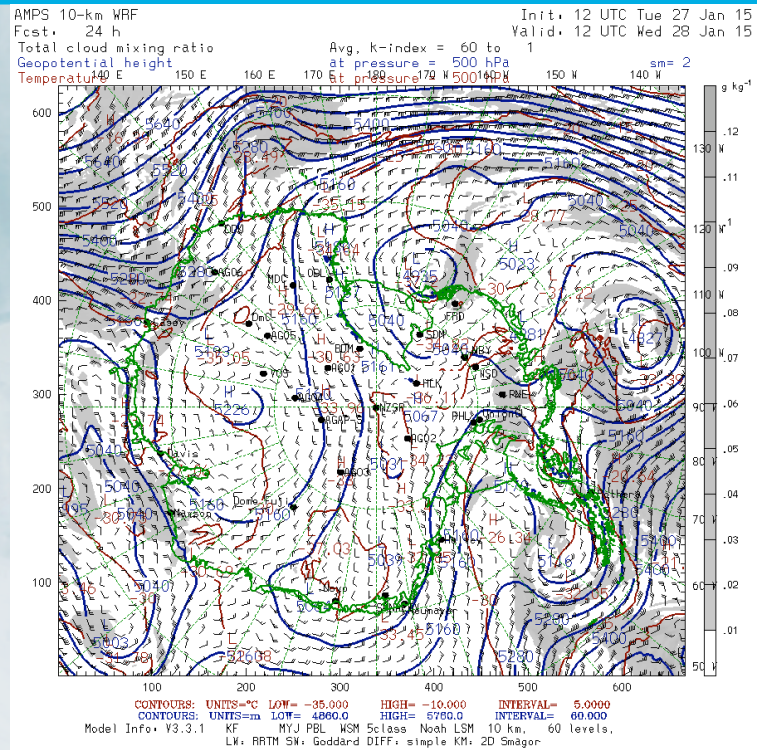
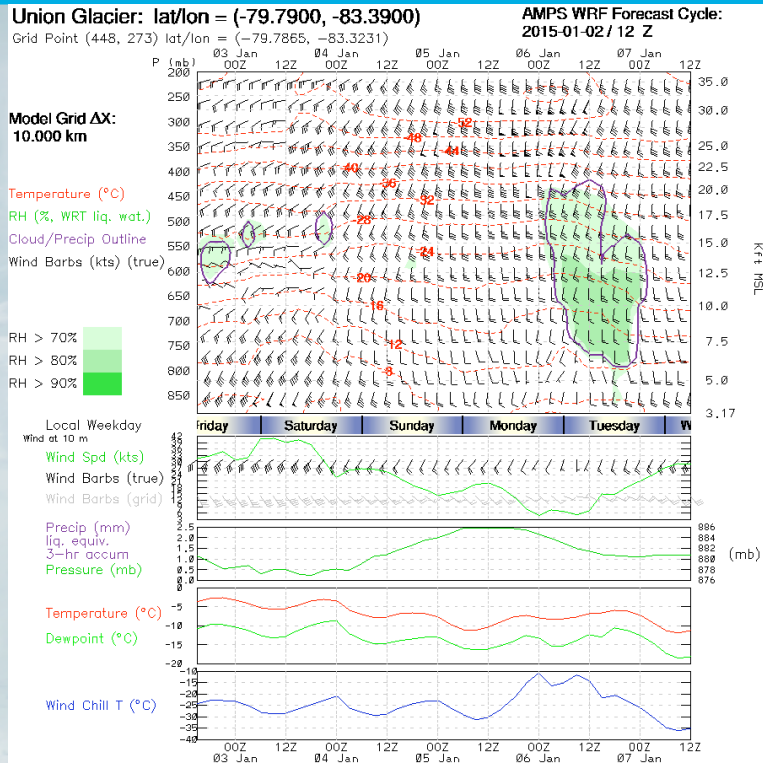
Outline

- ❗ AMPS Numerical Model
- ❗ Automatic Weather Stations
- ❗ SeaSpace Satellite Receiver

AMPS

- ❗ AMPS is a very important component in our weather forecasts and we are very grateful to be able to use it on a daily basis during the season 😊
- ❗ We receive charts by email and also utilise the website and Meteogram-on-demand
- ❗ Products Used Daily:
 - Soundings, Meteograms for many different locations
 - Upper Level Charts eg 500hPa
 - Surface and Upper Level Winds
 - Any many more.....

Products used Daily

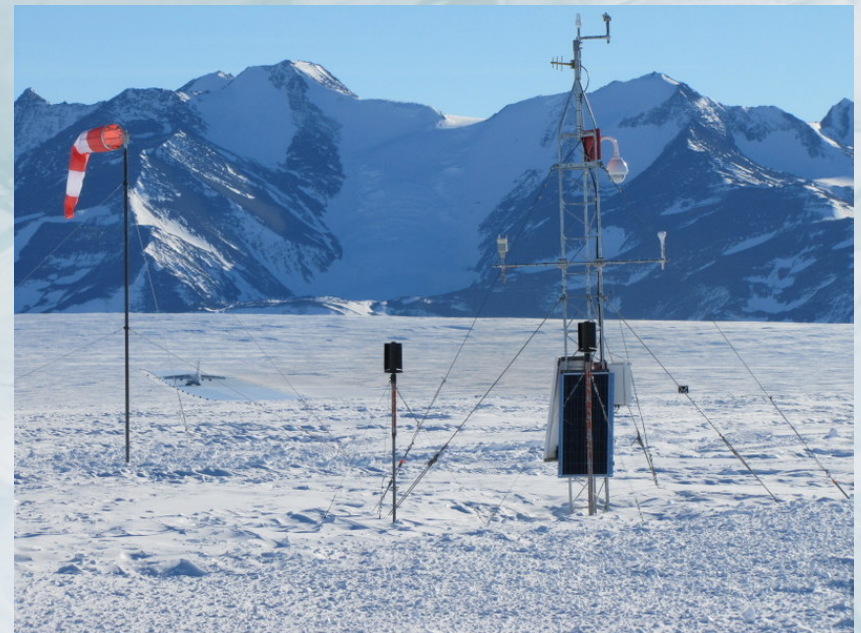


Automatic Weather Stations

- Designed, built and installed by Ronald Ross
- 5 Stations in Use in 3 locations
 - Wx7 – Blue Ice Runway Union Glacier (SCGC)
 - Wx14 – Secondary (backup for Wx7)
 - Wx12 - Also at SCGC
 - Wx8 - Thiels Mountains
 - Wx11 - Skytrain Ice Rise

Wx7 – Blue Ice Runway

- Main Features:
- Vaisala Wx Station
- Garmin GPS
- Sony Camera – set positions but can be changed remotely if required
- 900MHz Antenna – transmits data back to Camp
- Data and imagery transmitted via Iridium
 - Available on www.thistle.org



Wx14 – Blue Ice Runway

- 🚧 Installed in 2014
- 🚧 Backup for Wx7 – almost identical system and located next to it.
- 🚧 Possibility of moving the older Wx7 to the Skiway, which would improve met support for Ski Aircraft.

Wx12 – Blue Ice Runway

- Designed specifically to detect Drifting and Blowing Snow at the Blue Ice Runway
 - High Resolution Mobotix (Security) Camera
 - Camera Position is set but can Zoom in/out for finer detail
 - Data is transmitted to camp via wifi

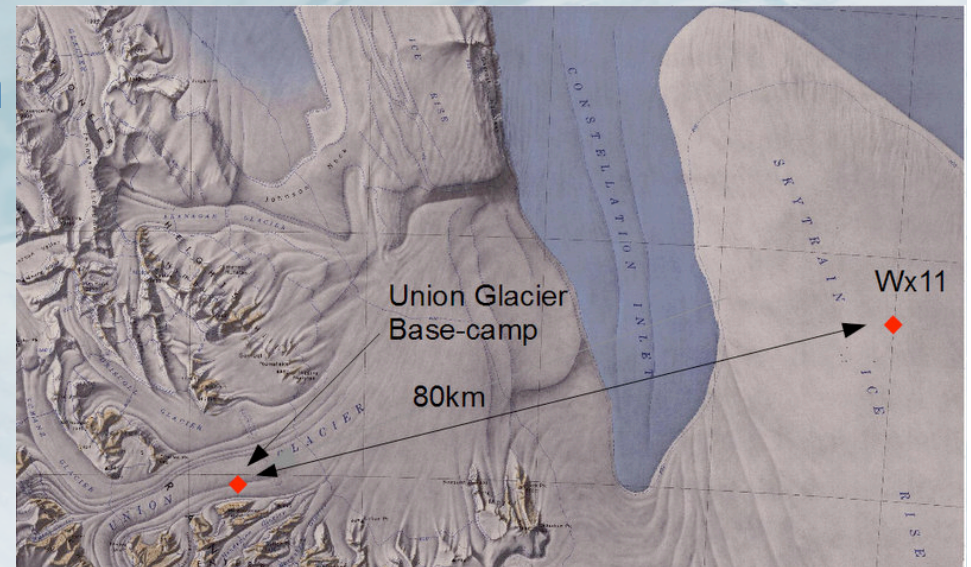
Wx12 - Camera Display

Wx12, UG-Runway
GPS_Box - 16, BC
Camera - B, BC
192.168.0.24
2014-12-02
20:29:37.334



Wx11 – SkyTrain IceRise

- Designed to aid the early detection of FOG coming from the direction of the Ronne Ice Shelf
- 80km to the East



Wx11 – SkyTrain IceRise

- ☛ Sony Camera – pre-set positions but it can also be moved remotely
- ☛ Vaisala Weather Station
- ☛ Data sent via UHF
- ☛ Has proved very useful



Wx8 – Thiels Mountains

- 🚧 Thiels Fuel Cache 85 South – Ski Aircraft fuel stop en route to South Pole
- 🚧 2 Cameras - 3 pictures taken every 30 mins
- 🚧 Cloud Software - % Cloudiness calculated
- 🚧 Also has the other usual Weather Sensors
- 🚧 Data and Imagery via Iridium

Wx8 – Data Available

Latest from Wx8 @ Thiels

Images & weather are taken every 30 mins

Sun Dec 21 13:26:05 UTC 2014



Wind direction = 192 deg true Wind speed = 4.074 kts Wind gust = 4.268 kts

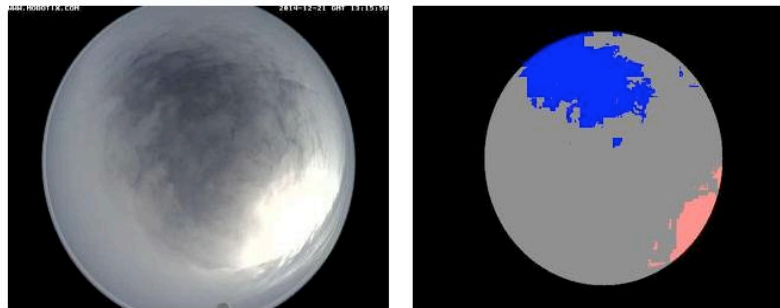
Air temperature = -14.8 C Humidity = 74.0 % Pressure = 833.4 hPa
Battery = 13.50 V Current = 0.193 A PCB Temp = 21.59 C
Solar_snow = 0.00 V Solar_sky = 0.00 V UV = 0.00 V

Wx8 – Cloud Software

Latest from Wx8 @ Thiels

Images & weather from the SkyCam are taken every 30mins

Sun Dec 21 13:33:18 UTC 2014



Cloudiness = 83 %

Wind direction = 192 deg true Wind speed = 4.074 kts Wind gust = 4.268 kts

Air temperature = -14.8 C Humidity = 74.0 % Pressure = 833.4 hPa

Battery = 13.50 V Current = 0.193 A PCB Temp = 21.59 C

Solar_snow = 0.00 V Solar_sky = 0.00 V UV = 0.00 V

SeaSpace Antenna



- Installed in 2013-2014 Season
- 0.61m L-Band flat plate antenna
- Mounted on a 3-axis positioner
- 0.90m Radome
- Receives and Processes data from current Polar Orbiting Met Satellites (NOAA and METOP)



0.61m Antenna

Reasons we chose this antenna

Low Power Consumption

- Rely mostly on Solar in UG
- Main power user is the heating coil which keeps the inside of the Radome above freezing

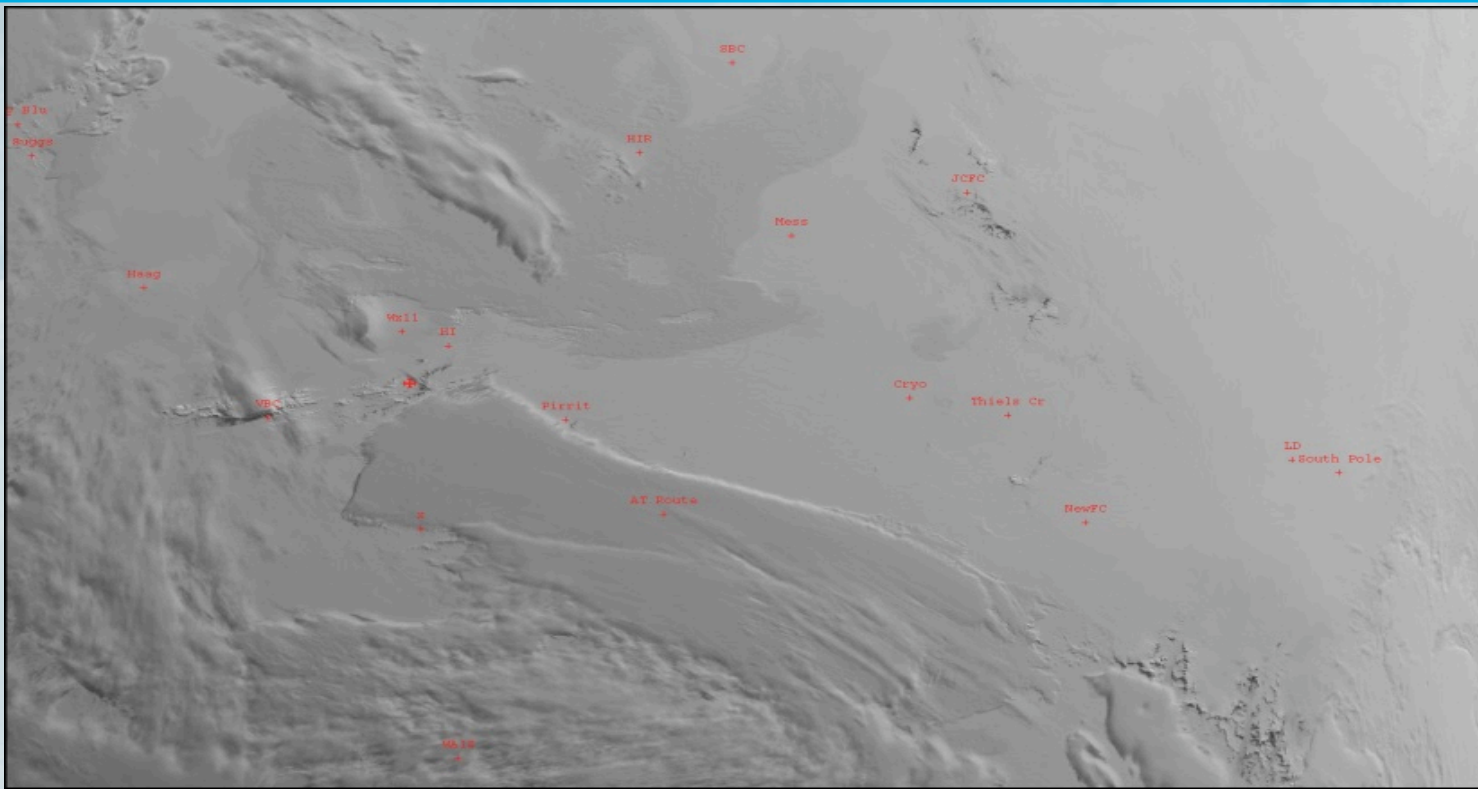
Compact and movable

- No permanent structures at UG
- We store the unit in Punta Arenas during the Winter to prevent cold damage

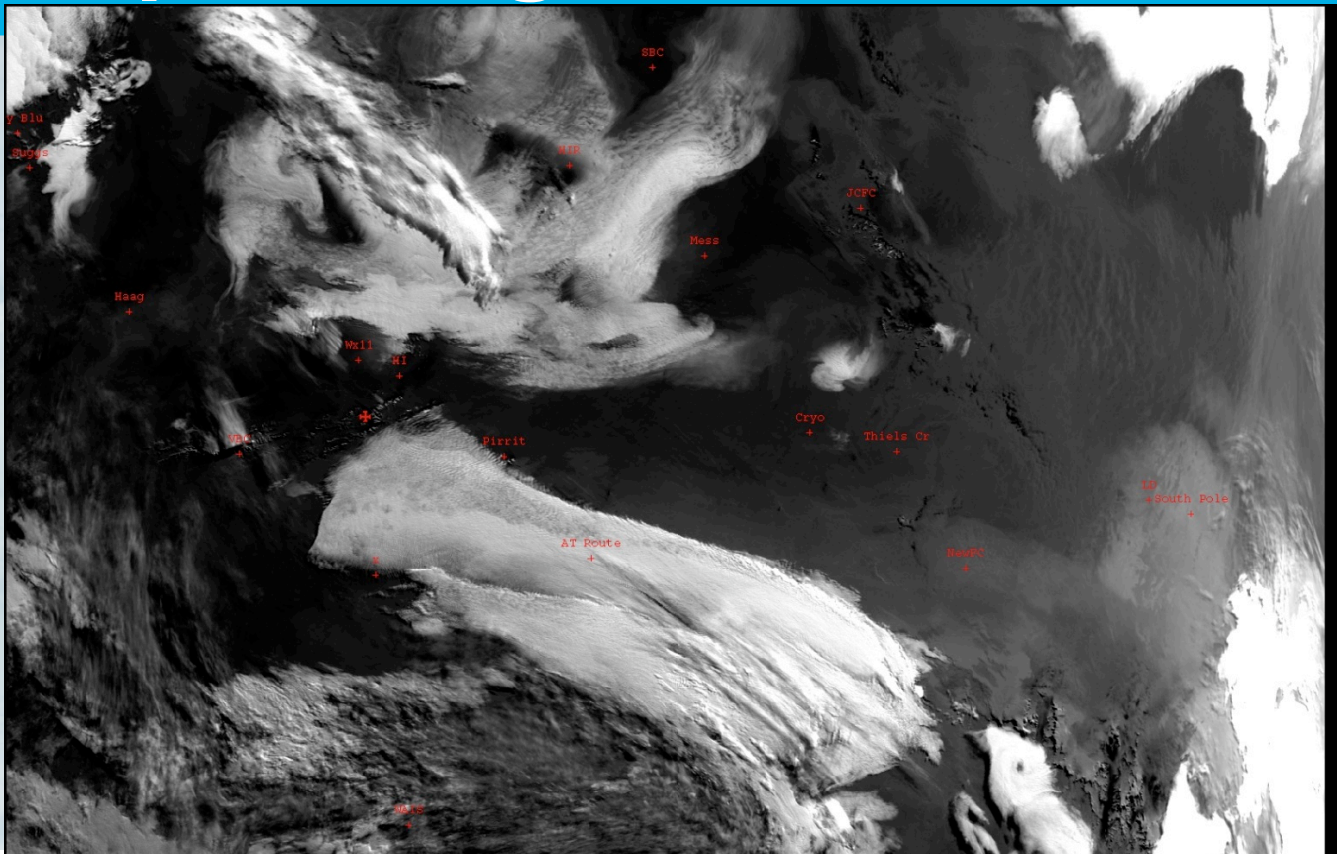
SeaSpace Software

- TeraScan Software Suite
- TeraVision – Visualisation Tool
 - Image Manipulations and Enhancements
 - Colour Adjustments
 - Overlays – boundaries, lat/long grids etc.
 - Annotations
 - Measurement Tools – distance/bearing/area etc.
 - Export images as jpeg,gif,tiff,png

Example Image NOAA19 CH1



Example Image NOAA19 CH3



SeaSpace Antenna - Overall

- ⚠ Some power issues in poor weather
- ⚠ Some positioning issues – has lost its GPS location on a few occasions
- ⚠ Overall has greatly improved our forecasting capabilities and we are very happy with its operation.

Thank You! 😊