



# HELO Weather

**McMurdo Weather**  
Email: [mcm.weather.forecaster@usap.gov](mailto:mcm.weather.forecaster@usap.gov)  
Iridium: 00 8816 7632 0030  
Duty Forecaster: x42524  
Briefing Counter: x43353

Date (L): Wednesday, 1 February 2023

Brief Time (L): 0615

Briefing Number: 02-01

FCSTR: Jeff Fournier

## REGIONAL SUMMARY

North winds on the north side of Ross Island will transport moisture and clouds southward along the coasts and into town. Later today, this may culminate in periods of snow, mainly from Cape Crozier to the airfields, though isolated light snow is possible elsewhere.

## HAZARDS

IFR VISIBILITY (HORIZONTAL AND VERTICAL) BLACK ISLAND IN LIGHT SNOW AND CLOUD.  
AREAS OF MVFR-IFR VISIBILITY IN -SN, EXCLUDING THE DRY VALLEYS, MAINLY CAPE CROZIER TO THE AIRFIELDS THIS AFTERNOON.  
AREAS OF MVFR CLOUD CEILINGS.  
TRACE TO LIGHT RIME ICING IN CLOUD, GENERALLY IN THE LOWEST 080 FT ABOVE MSL.  
OCNL LGT TURBULENCE OVER AND NEAR RUGGED AND HIGHER TERRAIN.

## LATEST MCMURDO OBSERVATION

METAR ZCMA 311654Z AUTO 31003KT 9999 BKN031 OVC070 M04/M09 A2915 RMK AO2 SLP876 GRID12003KT

## RUNWAY TAFS

TAF NZWD 311457Z 3115/0115 (0104/0204NZDT) VRB06KT 9999 -SN SCT015 BKN030 OVC070 600304 QNH2915INS  
TEMPO 3115/3121 (0104/0110) 4800 -SN BKN015 620156  
BECMG 0102/0104 (0115/0117) 12013G23KT 1200 -SN BR DRSN BKN009 OVC015 620094 QNH2918INS  
GRID29013G23KT  
TEMPO 0104/0108 (0117/0121) 9999 -SN SCT010 BKN020 600203  
BECMG 0106/0108 (0119/0121) VRB06KT 9999 NSW SCT015 BKN030 QNH2917INS

TAF NZFX 311457Z 3115/0115 (0104/0204NZDT) VRB06KT 9999 -SN SCT015 BKN030 OVC070 600304 QNH2916INS  
TEMPO 3115/3121 (0104/0110) 4800 -SN BR BKN015 620156  
BECMG 0102/0104 (0115/0117) VRB06KT 2400 -SN SCT008 BKN012 OVC030 620154 QNH2917INS  
TEMPO 0104/0108 (0117/0121) 9999 -SN SCT015 BKN030 600302  
BECMG 0106/0108 (0119/0121) VRB06KT 9999 NSW SCT015 BKN030 QNH2917INS

## MCMURDO HELIPAD FORECAST (VALID TIME: 01/0600L - 01/1800L)

**SFC WIND (TRUE):** VRB06KT BECMG 08013G20KT AFT 12L  
**SFC VISIBILITY (SM):** UNR TEMPO 3-5 -SN UNTIL 10L, BECMG 4-6 -SN TEMPO 1-2 -SN AFT 15L  
**SKY CONDITION (MSL):** SCT015 BKN030 OVC070 TEMPO BKN015 UNTIL 10L, BECMG SCT008 BKN012 OVC030 AFT 15L  
**MIN ALSTG:** 2913INS  
**HAZARDS:** TRACE TO LIGHT RIME ICG IN CLOUD

**SITE & AREA FORECASTS (VALID TIME: 01/0600L – 01/1800L)**

**SCOTT BASE**

**SFC WIND (TRUE):** VRB06KT BECMG 08012G19KT AFT 12L

**SFC VISIBILITY (SM):** UNR TEMPO 3-5 –SN UNTIL 10L, BECMG 4-6 –SN TEMPO 1-2 –SN AFT 15L

**SKY CONDITION (MSL):** SCT015 BKN030 OVC070 TEMPO BKN015 UNTIL 10L, BECMG SCT008 BKN012 OVC030 AFT 15L

**MIN ALSTG:** 2913INS

**HAZARDS:** TRACE TO LIGHT RIME ICG IN CLOUD

**BLACK ISLAND**

**SFC WIND (TRUE):** VRB06KT

**SFC VISIBILITY (SM):** UNR TEMPO 1 OR LESS –SN CLOUD

**SKY CONDITION (MSL):** SCT015 BKN-OVC030 TEMPO VV004

**MIN ALSTG:** 2912INS

**HAZARDS:** TRACE TO LGT RIME ICG IN CLOUD

**MARBLE POINT**

**SFC WIND (TRUE):** 22005KT BECMG 12008KT AFT 14L

**SFC VISIBILITY (SM):** UNR TEMPO 1-3 –SN

**SKY CONDITION (MSL):** SCT015 BKN030 OVC070 TEMPO BKN009

**MIN ALSTG:** 2914INS

**HAZARDS:** TRACE TO LIGHT RIME ICG IN CLOUD

**LAKE BONNEY**

**SFC WIND (TRUE):** 24011G20KT BECMG VRB06KT AFT 14L

**SFC VISIBILITY (SM):** UNR

**SKY CONDITION (MSL):** SCT-BKN060

**MIN ALSTG:** 2911INS

**HAZARDS:** OCNL LGT TURBC SFC-010 AGL BEFORE 12L, THEN NIL

**LAKE HOARE**

**SFC WIND (TRUE):** 23010G16KT BECMG 08006KT AFT 15L

**SFC VISIBILITY (SM):** UNR

**SKY CONDITION (MSL):** SCT-BKN060

**MIN ALSTG:** 2909INS

**HAZARDS:** OCNL LGT TURBC SFC-010 AGL BEFORE 12L, THEN NIL

**F6**

**SFC WIND (TRUE):** 26004KT BECMG 06011KT AFT 15L

**SFC VISIBILITY (SM):** UNR TEMPO 4-6 BR AFT 15L

**SKY CONDITION (MSL):** SCT015 SCT-BKN060 TEMPO BKN015 AFT 15L

**MIN ALSTG:** 2915INS

**HAZARDS:** NIL

**ADAMS SG**

**SFC WIND (TRUE):** VRB04KT BECMG 10007KT AFT 14L

**SFC VISIBILITY (SM):** UNR TEMPO 4-6 –SN BR

**SKY CONDITION (MSL):** SCT015 BKN-OVC025 TEMPO BKN012

**MIN ALSTG:** 2902INS

**HAZARDS:** TRACE TO LGT RIME ICG IN CLOUD

**GARWOOD VALLEY****SFC WIND (TRUE):** VRB05KT**SFC VISIBILITY (SM):** UNR TEMPO 4-6 –SN BR**SKY CONDITION (MSL):** SCT015 BKN-OVC025 TEMPO BKN012**MIN ALSTG:** 2902INS**HAZARDS:** TRACE TO LGT RIME ICG IN CLOUD**TAYLOR VALLEY****SFC WIND (TRUE):** 27006KT BECMG 06008KT AFT 12L**SFC VISIBILITY (SM):** UNR TEMPO 4-6 BR AFT 15L**SKY CONDITION (MSL):** SCT015 SCT-BKN060 TEMPO BKN015 AFT 15L**MIN ALSTG:** 2909INS**HAZARDS:** NIL**COMMONWEALTH GL****SFC WIND (TRUE):** VRB04KT**SFC VISIBILITY (SM):** 4-6 –SN TEMPO 2-3 –SN BR**SKY CONDITION (MSL):** SCT015 BKN-OVC030 TEMPO BKN012**MIN ALSTG:** 2911INS**HAZARDS:** TRACE TO LGT RIME ICG IN CLOUD**NEW HARBOR****SFC WIND (TRUE):** 07006KT BECMG 12010KT AFT 15L**SFC VISIBILITY (SM):** UNR**SKY CONDITION (MSL):** SCT015 BKN030 OVC070 TEMPO BKN012**MIN ALSTG:** 2911INS**HAZARDS:** TRACE ICG IN CLOUD**HOLIDAY PEAK****SFC WIND (TRUE):** VRB06KT**SFC VISIBILITY (SM):** UNR BECMG 1-3 –SN BR AFT 13L**SKY CONDITION (MSL):** SCT030 SCT-BKN060 TEMPO BKN030 AFT 13L**MIN ALSTG:** 2892INS**HAZARDS:** NIL, TRACE TO LGT RIME ICG IN CLOUD AFT 13L**CAPE CROZIER****SFC WIND (TRUE):** VRB06KT**SFC VISIBILITY (SM):** UNR TEMPO 08-14L 1-3 –SN BR**SKY CONDITION (MSL):** SCT015 BKN030 OVC070 TEMPO 08-14L SCT007 BKN012**MIN ALSTG:** 2916INS**HAZARDS:** TRACE-LGT RIME ICG IN CLOUD BECMG NIL AFT 14L**CAPE ROYDS****SFC WIND (TRUE):** VRB05KT BECMG 16013G23KT AFT 14L**SFC VISIBILITY (SM):** UNR**SKY CONDITION (MSL):** SCT015 SCT-BKN025**MIN ALSTG:** 2911INS**HAZARDS:** NIL

**NIGHT AREA OUTLOOKS (VALID TIME: 01/1800L – 02/0600L)**

**ADAMS SG**

**SFC WIND (TRUE):** 10008KT BECMG VRB04KT AFT 22L

**SFC VISIBILITY (SM):** UNR TEMPO 3-5 –SN BR UNTIL 22L

**SKY CONDITION (MSL):** SCT015 SCT-BKN030 TEMPO BKN015 BEFORE 22L

**MIN ALSTG:** 2903INS

**HAZARDS:** TRACE TO LGT RIME ICG IN CLOUD

**FISHTAIL POINT**

**SFC WIND (TRUE):** 34008KT BECMG VRB05KT AFT 12L

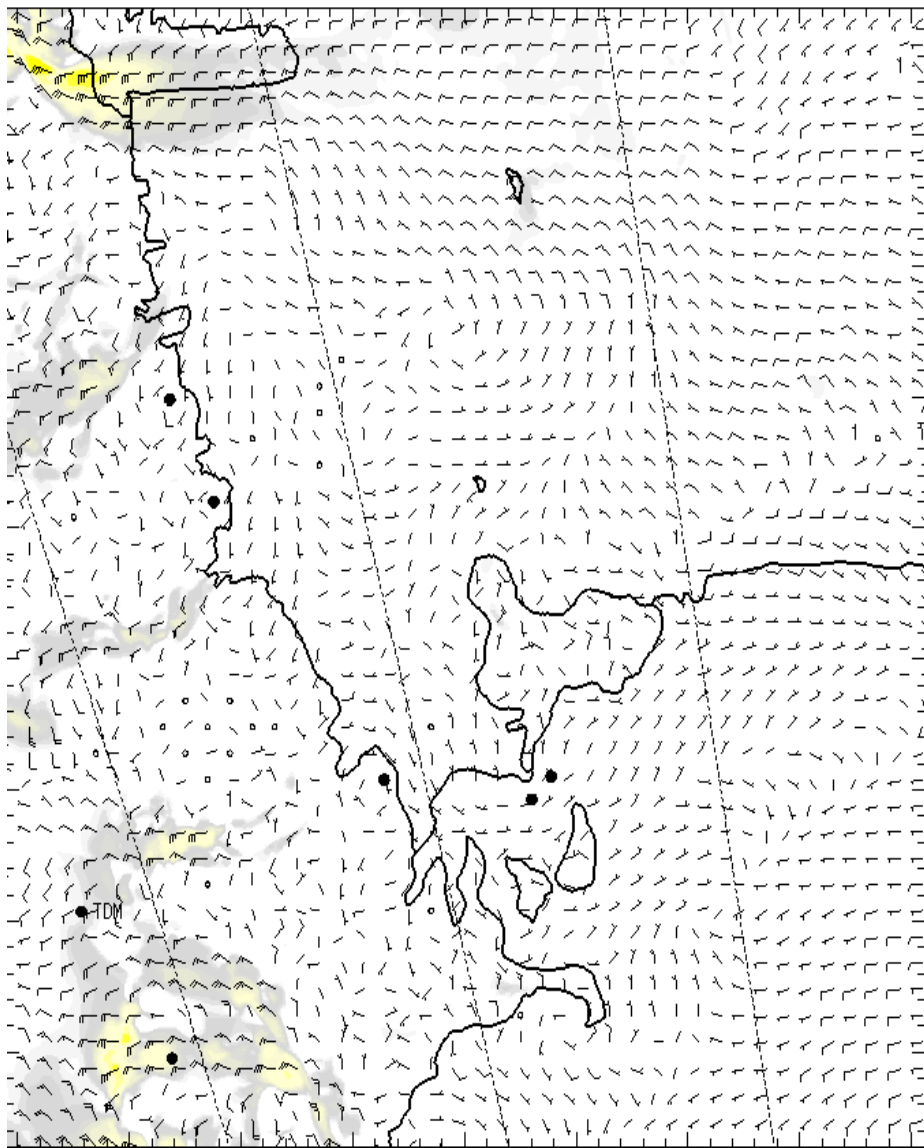
**SFC VISIBILITY (SM):** UNR

**SKY CONDITION (MSL):** SCT070

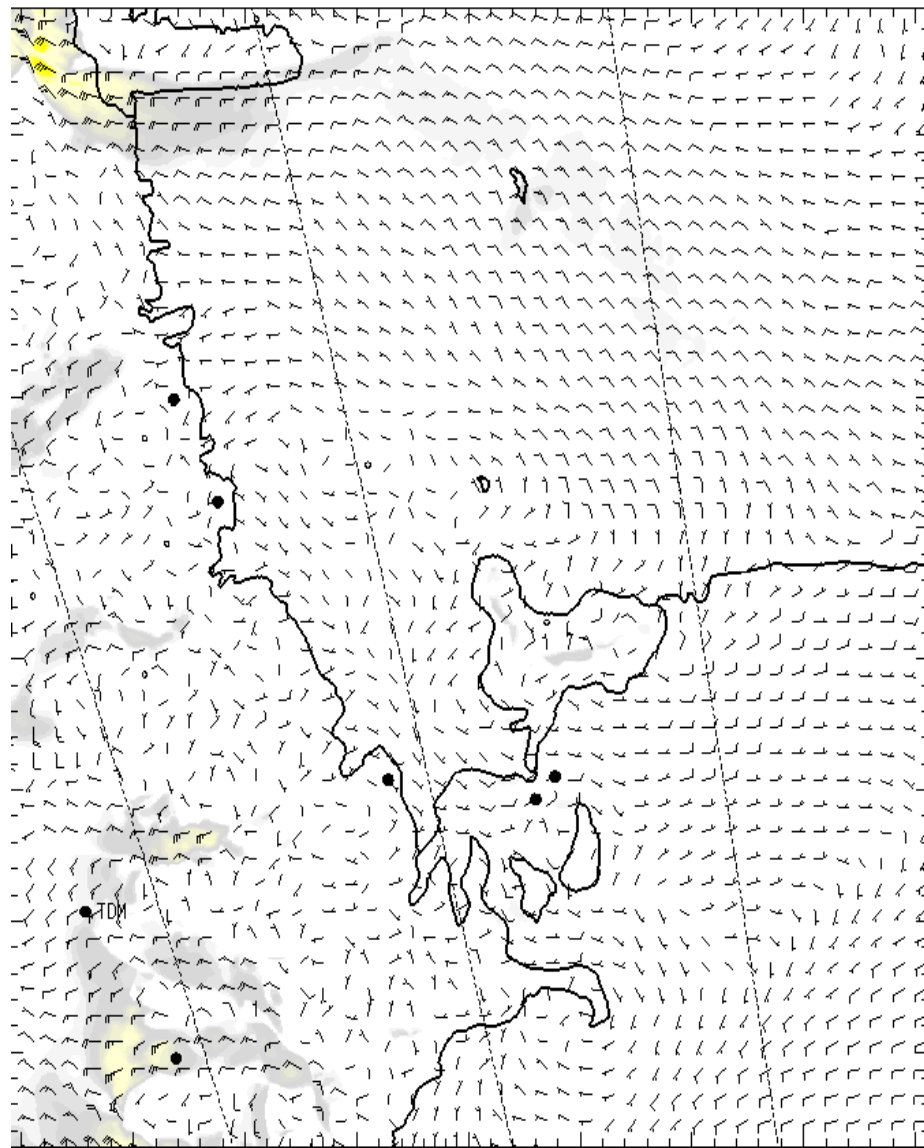
**MIN ALSTG:** 2872INS

**HAZARDS:** NIL

# SFC

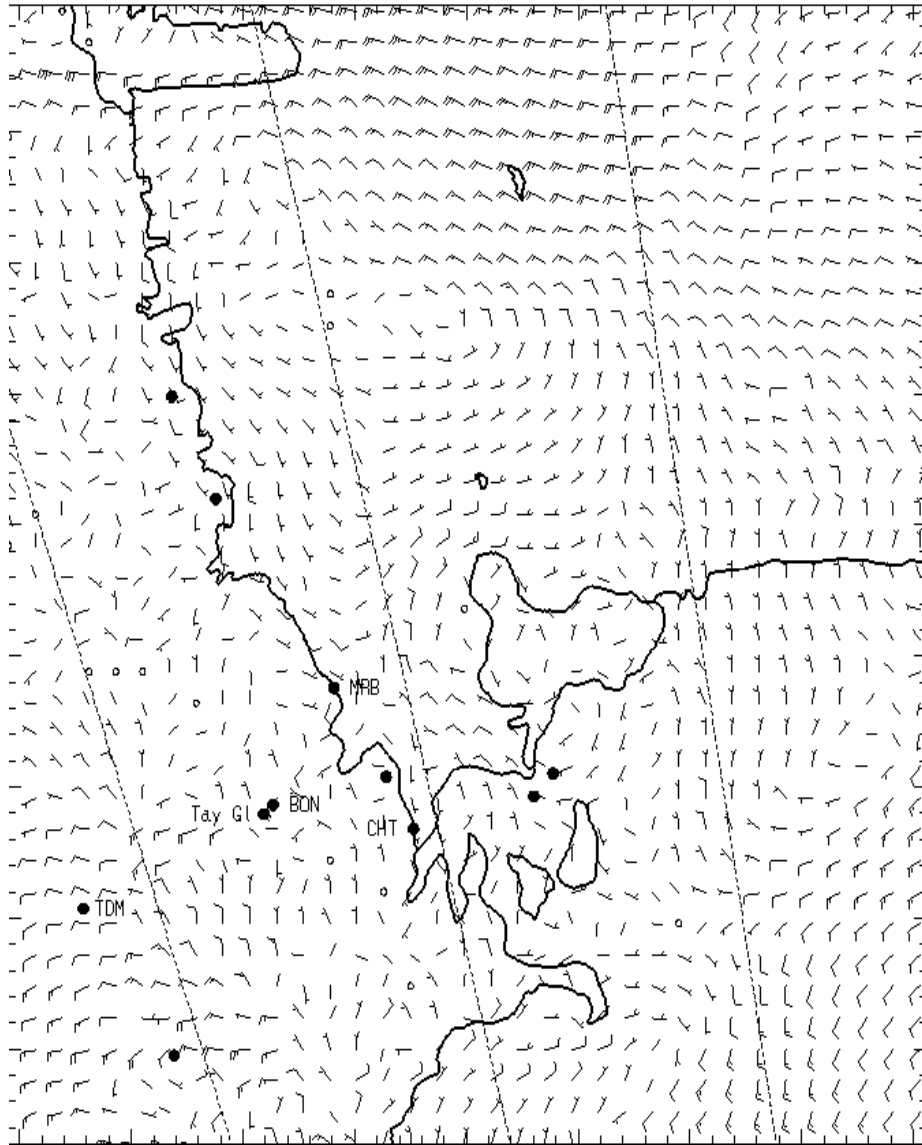


0700L

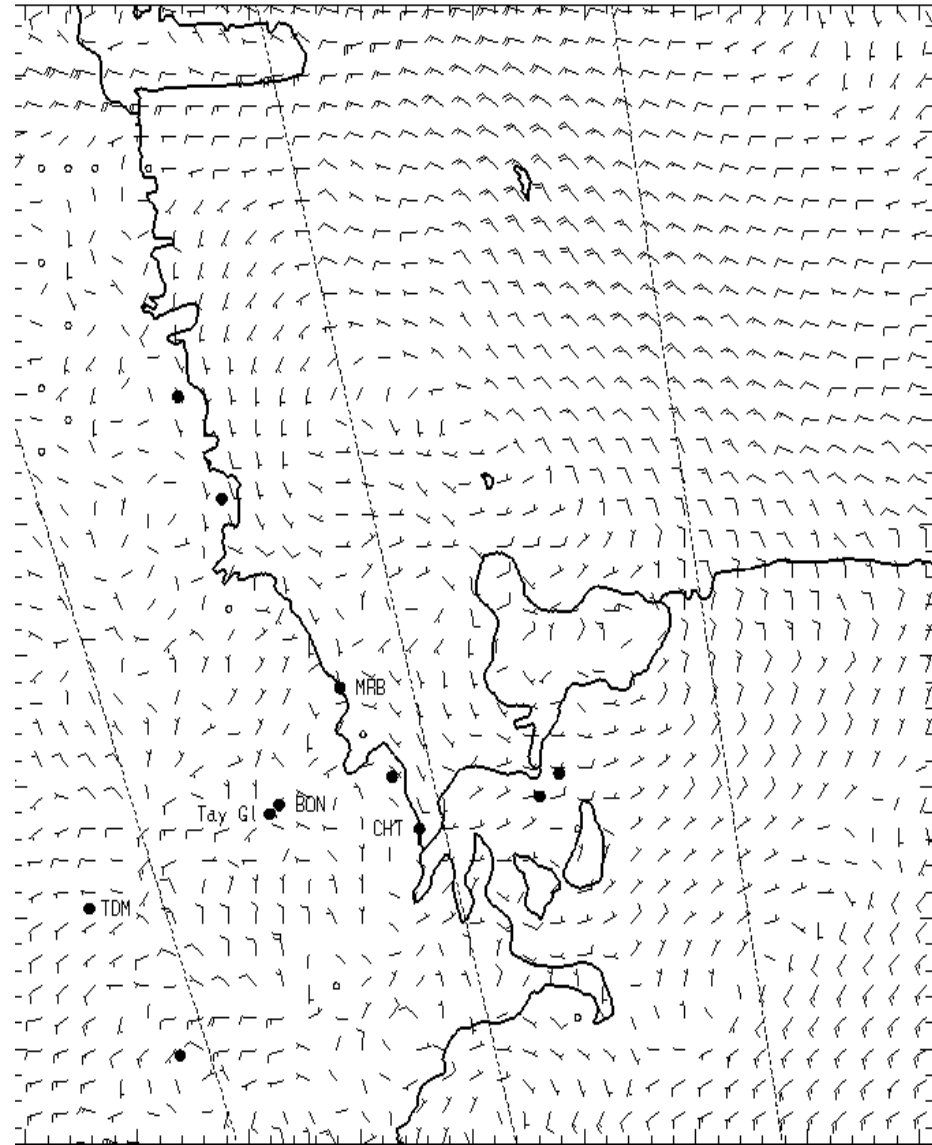


1300L

# 1,000 ft AGL

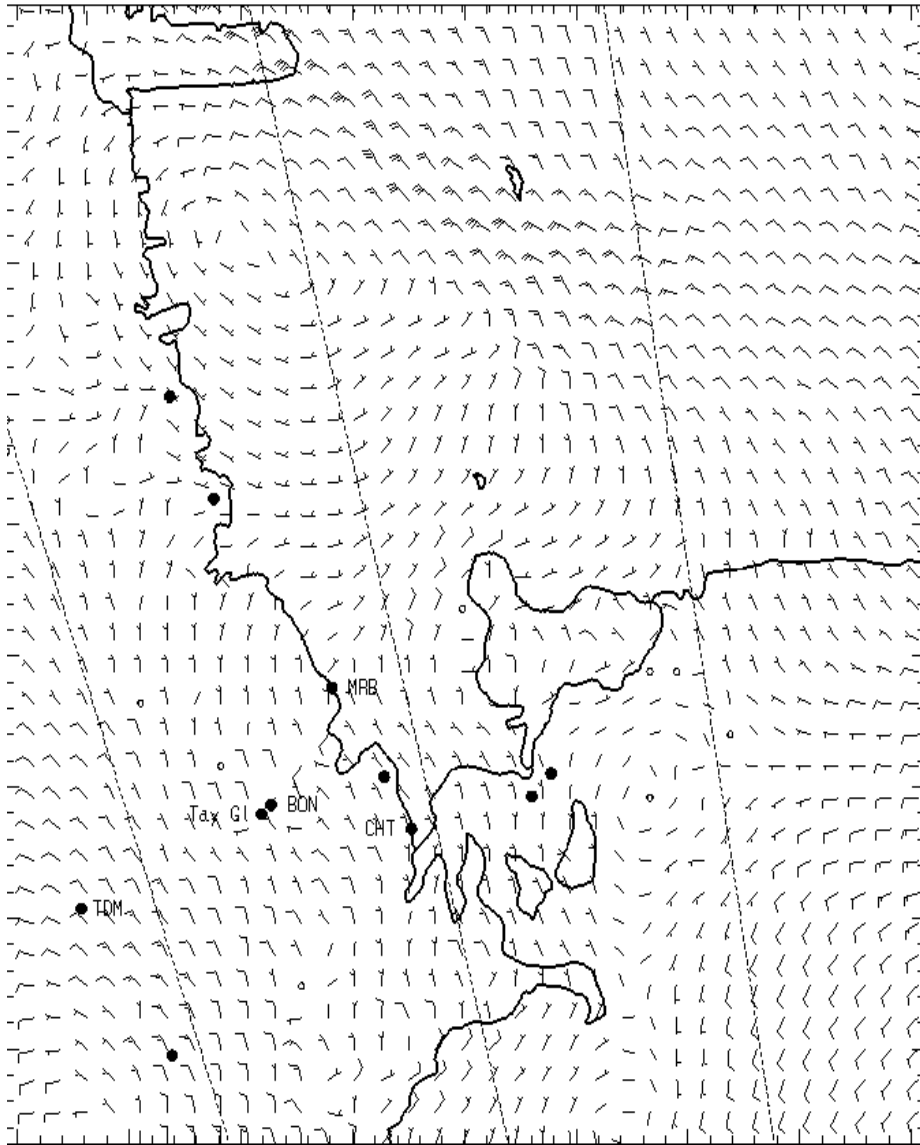


0700L

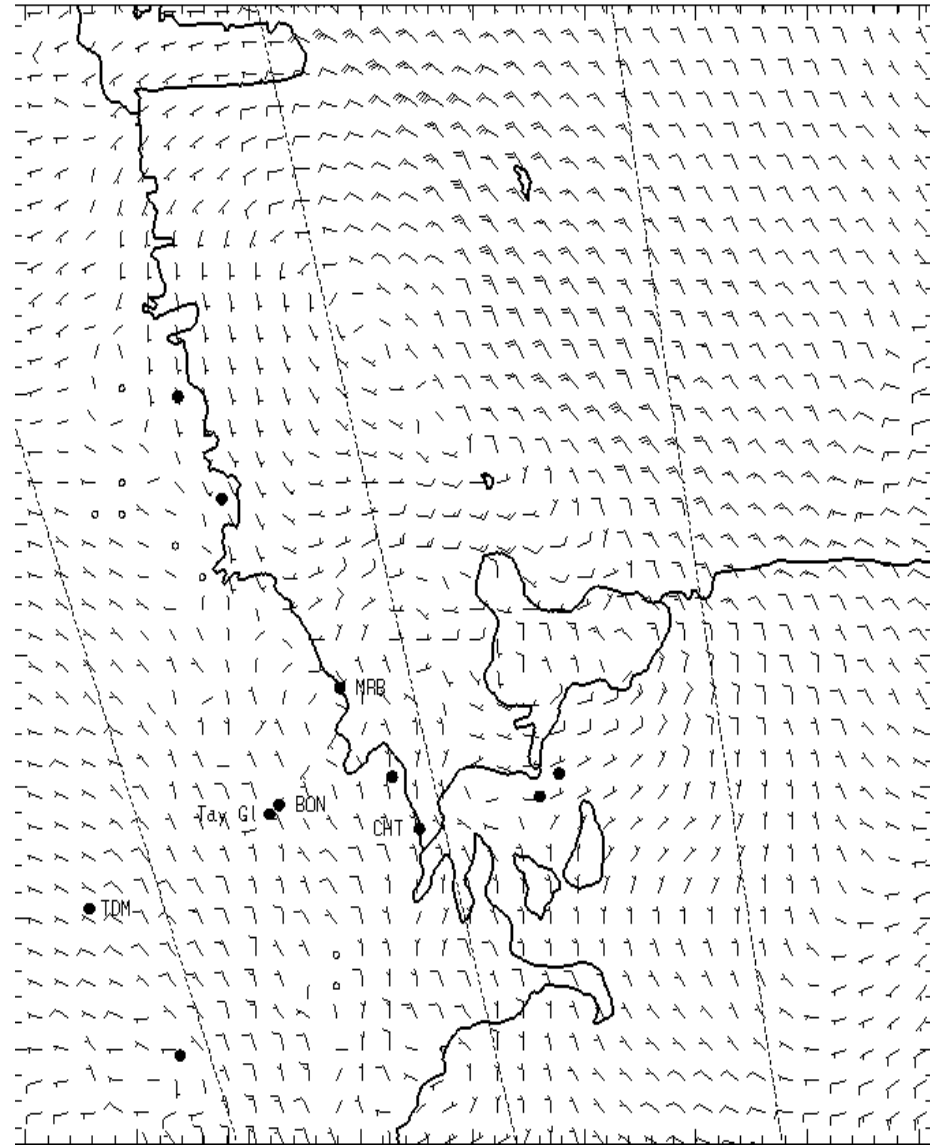


1300L

# 3,000 ft AGL

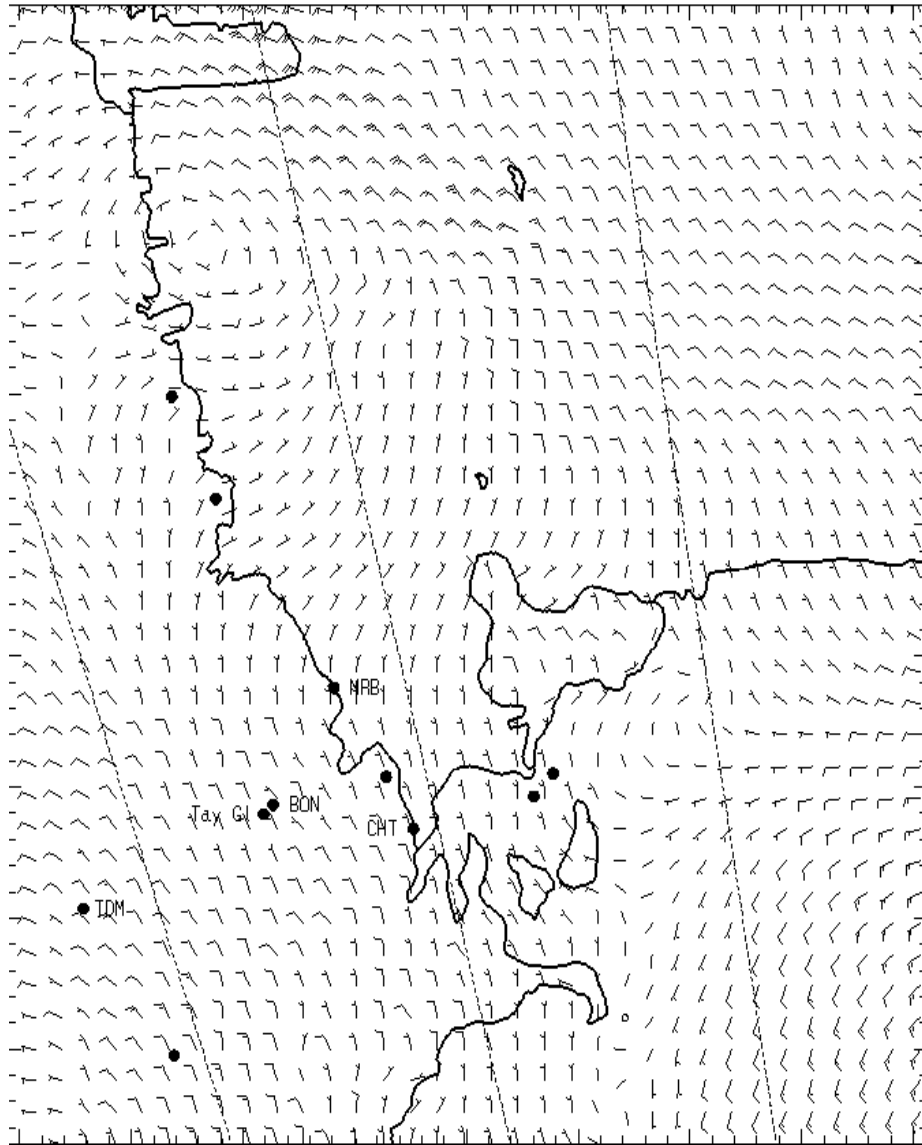


0700L

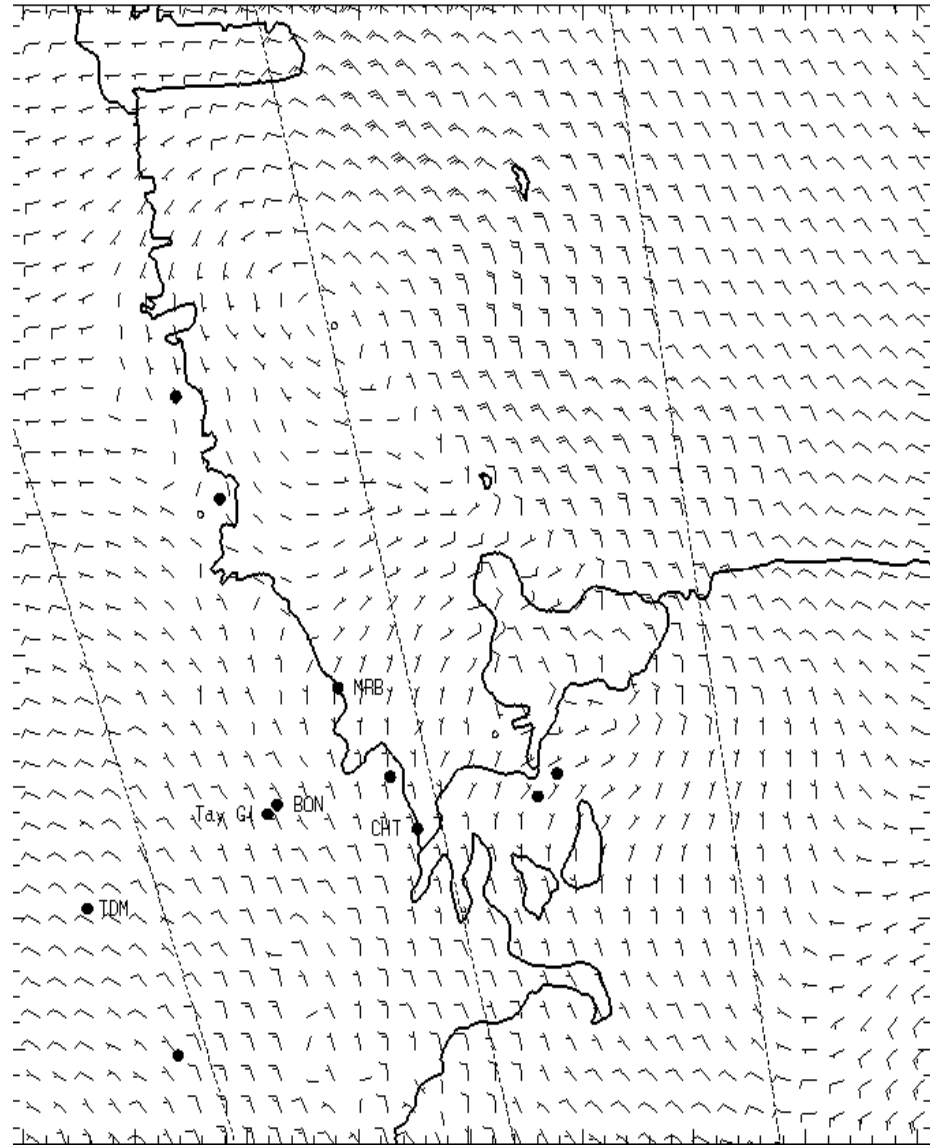


1300L

# 5,000 ft AGL



0700L



1300L