



Helo Weather

Charleston ROF

Email: weather.chs@usap.gov

Iridium: 011 8816 7631 5168

VOIP: x32664

Charleston ROF: 843-218-3927

Date (L): Saturday 11 November 2023

Brief Time (L): 0615

Briefing Number: 11-014

FCSTR: Bob Michael / Joshua Drewno

REGIONAL SUMMARY

Another low is passing to the North of Ross Island across Northern portions of the Ross Sea. Passage of this low will cause standard wind flow to eventually shift to coming from the East, essentially reversing the valley flow following 23L.

HAZARDS

Light- to Moderate Turbulence up the sound from the surface to 5kft.

LATEST MCMURDO OBSERVATION

METAR ZCMA 101645Z AUTO 08015G19KT 050V110 9999 SKC M14/M23 A2910 RMK AO2 SLP858 GRID24015G19KT 220V280=

RUNWAY TAFS

TAF NZFX 101457Z 1015/1115 (1104/1204NZDT) 16007KT 9999 FEW025 BKN120 510003 QNH2911INS GRID33007KT
TEMPO 1021/1106 (1110/1119) 16015G25KT DRSN GRID33015G25KT
BECMG 1107/1109 (1120/1122) 06007KT 9999 FEW025 SCT120 QNH2910INS GRID23007KT

TAF NZWD 101457Z 1015/1115 (1104/1204NZDT) VRB06KT 9999 VCFG FEW010 SCT025 SCT120 QNH2911INS
BECMG 1019/1021 (1108/1110) 08012G22KT 9999 DRSN FEW010 SCT025 BKN120 510003 QNH2911INS
GRID25012G22KT

TEMPO 1019/1022 (1108/1111) 9000 -SN DRSN SCT010 BKN025
BECMG 1111/1113 (1200/1202) 05012KT 9999 NSW FEW025 SCT120 QNH2910INS GRID22012KT

MCMURDO HELIPAD FORECAST (VALID TIME: 11/0600L - 1800L)

SFC WIND (TRUE): 06018G30KT

SFC VISIBILITY (SM): UNRES, with occasional snow flurries

SKY CONDITION (AGL): FEW025 BKN120

MIN ALSTG: 29.05INS

HAZARDS: LGT TURBC SFC-030

SITE & AREA FORECASTS (VALID TIME: 11/0600L - 1800L)

WHITEOUT AREA RECCE

SFC WIND (TRUE): 07010G15KT

SFC VISIBILITY (SM): UNRES

SKY CONDITION (AGL): FEW025 BKN120

MIN ALSTG: 29.05INS

HAZARDS: LGT TURBC SFC-030 AFT 10L

LAKE HOARE

SFC WIND (TRUE): 09006KT

SFC VISIBILITY (SM): UNRES

SKY CONDITION (AGL): FEW010 BKN120

MIN ALSTG: 28.96INS

HAZARDS: NIL

BLACK ISLAND

SFC WIND (TRUE): 20006KT

SFC VISIBILITY (SM): UNRES

SKY CONDITION (AGL): FEW050

MIN ALSTG: 29.04INS

HAZARDS: NIL

LAKE BONNEY

SFC WIND (TRUE): VRB06KT

SFC VISIBILITY (SM): UNRES

SKY CONDITION (AGL): BKN120

MIN ALSTG: 28.96INS

HAZARDS: NIL

F6

SFC WIND (TRUE): 06010KT

SFC VISIBILITY (SM): UNRES

SKY CONDITION (AGL): FEW020 BKN120

MIN ALSTG: 29.05INS

HAZARDS: NIL

MARBLE POINT

SFC WIND (TRUE): 15012G18KT

SFC VISIBILITY (SM): UNRES

SKY CONDITION (AGL): SCT015 BKN120

MIN ALSTG: 29.02INS

HAZARDS: LGT TURBC SFC-040

ADAMS GAGE

SFC WIND (TRUE): 08006KT

SFC VISIBILITY (SM): UNRES

SKY CONDITION (AGL): BKN120

MIN ALSTG: 28.91INS

HAZARDS: UNRES

MIERS VALLEY

SFC WIND (TRUE): 08006KT

SFC VISIBILITY (SM): UNRES

SKY CONDITION (AGL): FEW030 BKN120

MIN ALSTG: 28.82INS

HAZARDS: NIL

CAPE ROYDS

SFC WIND (TRUE): 14015G25KT, BECMG 13020G35KT AFT11L

SFC VISIBILITY (SM): UNRES

SKY CONDITION (AGL): FEW010 BKN120

MIN ALSTG: 29.00

HAZARDS: NIL

CONES

SFC WIND (TRUE): 06015G25KT

SFC VISIBILITY (SM): 0400 FG

SKY CONDITION (AGL): VV005

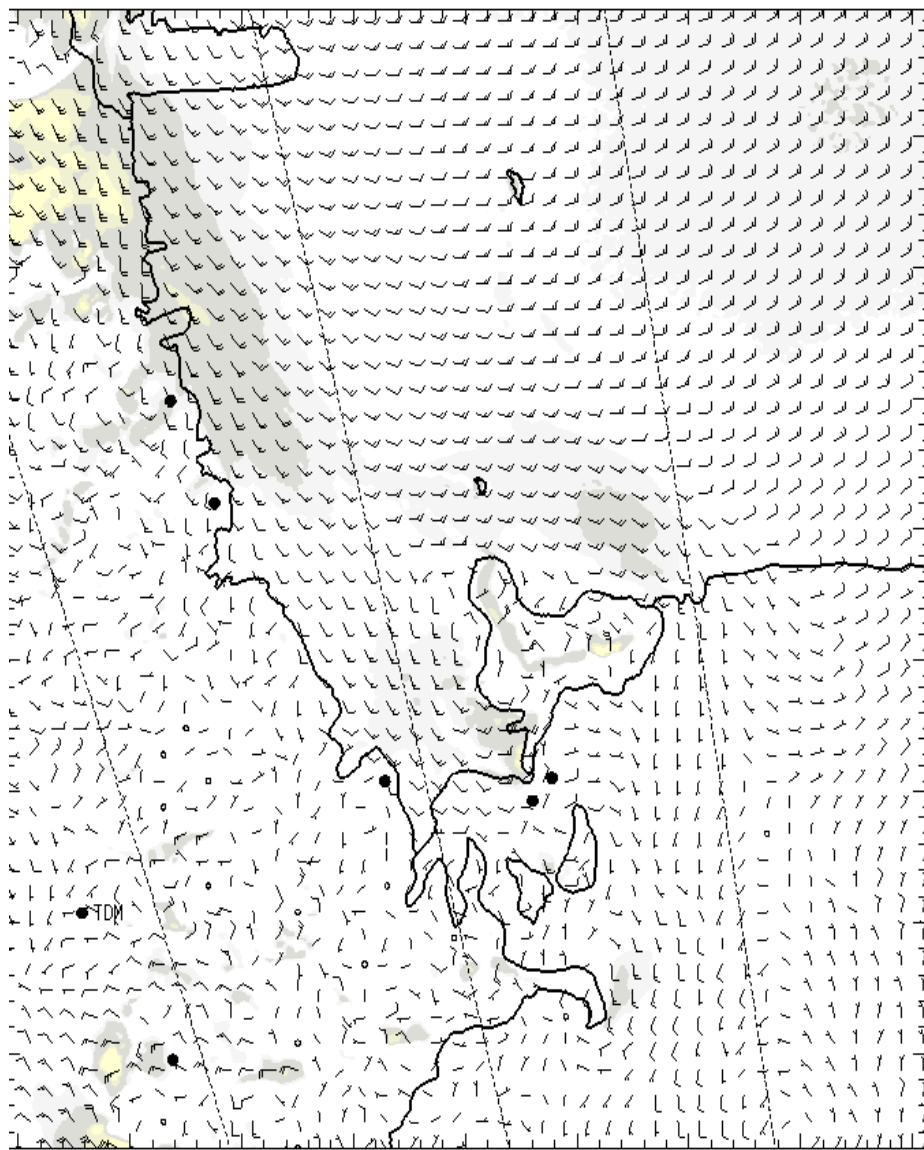
MIN ALSTG: 28.06INS

HAZARDS: LGT-MDT TURBC SFC-030

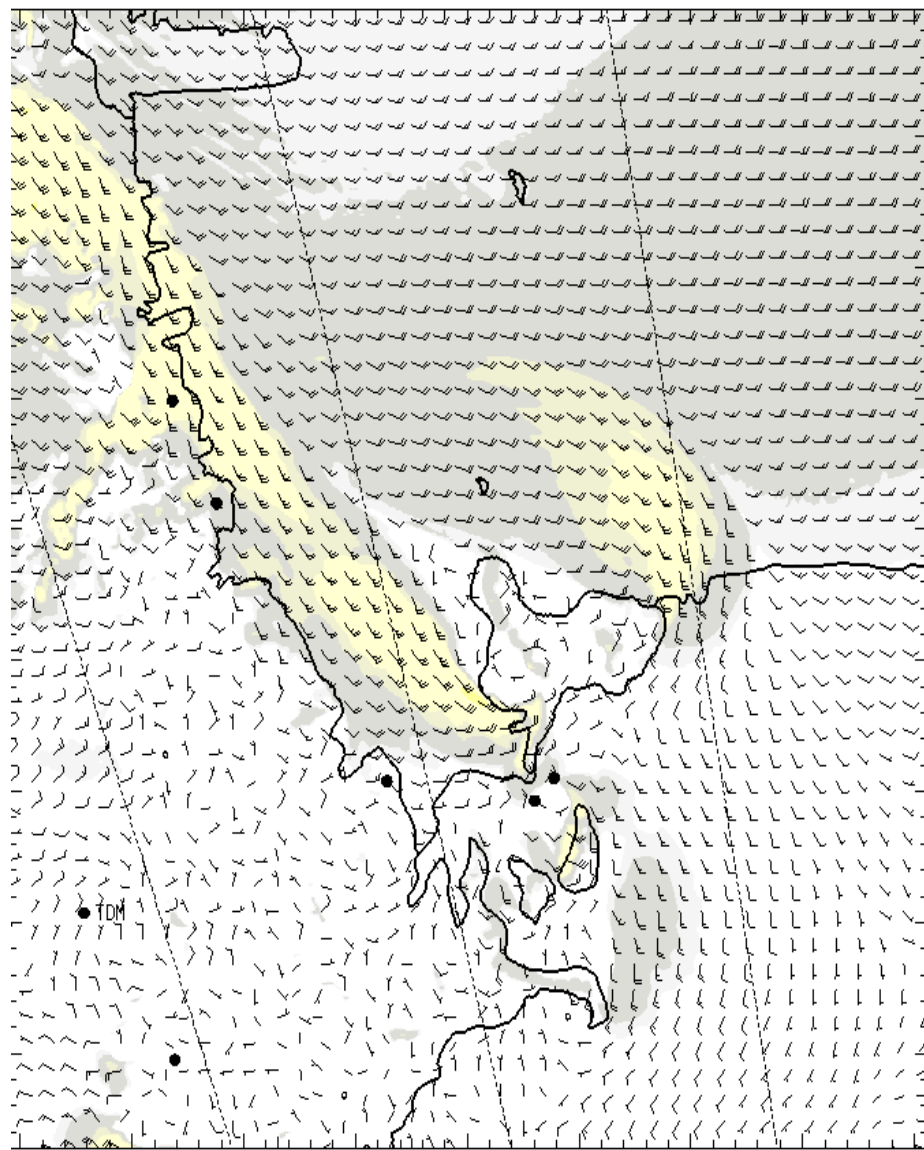
NIGHT SITE & AREA FORECASTS (VALID TIME: 11/1800L – 12/0600L)

NIL

SFC

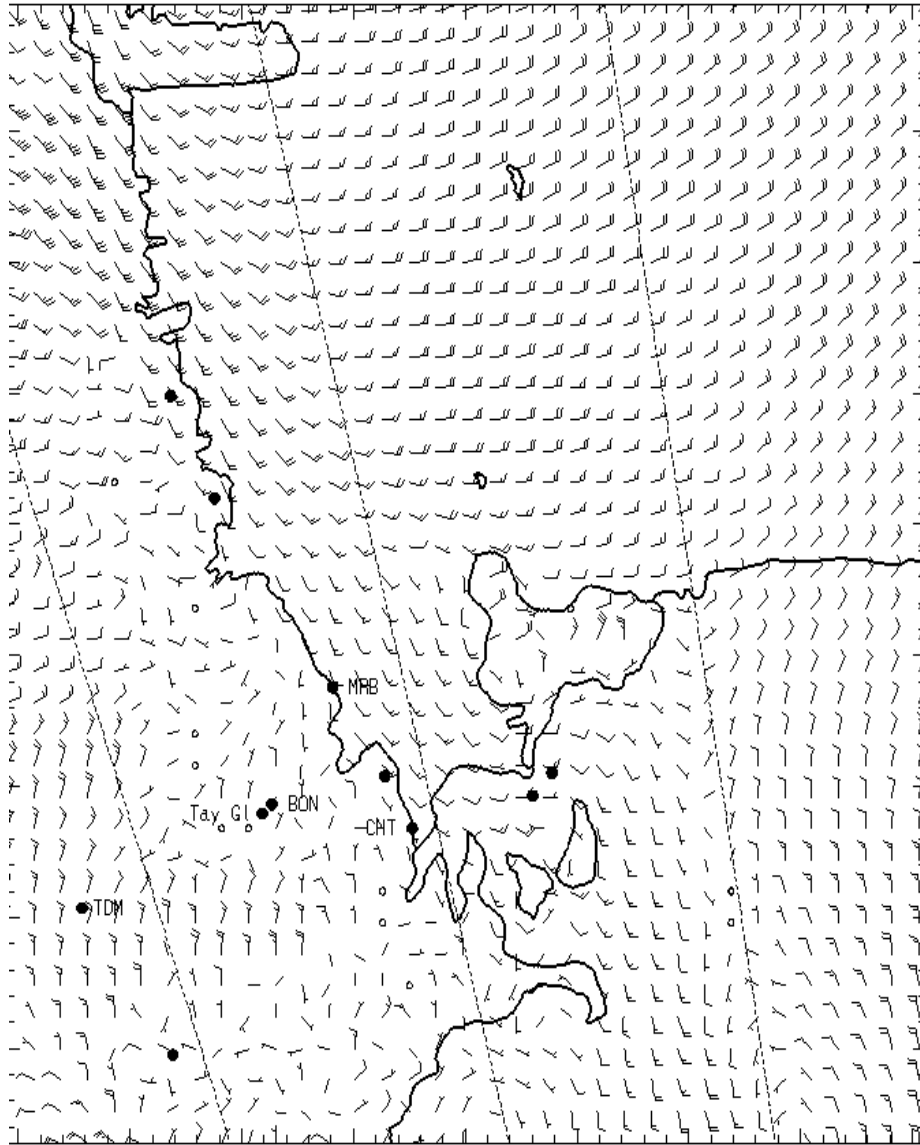


0700L

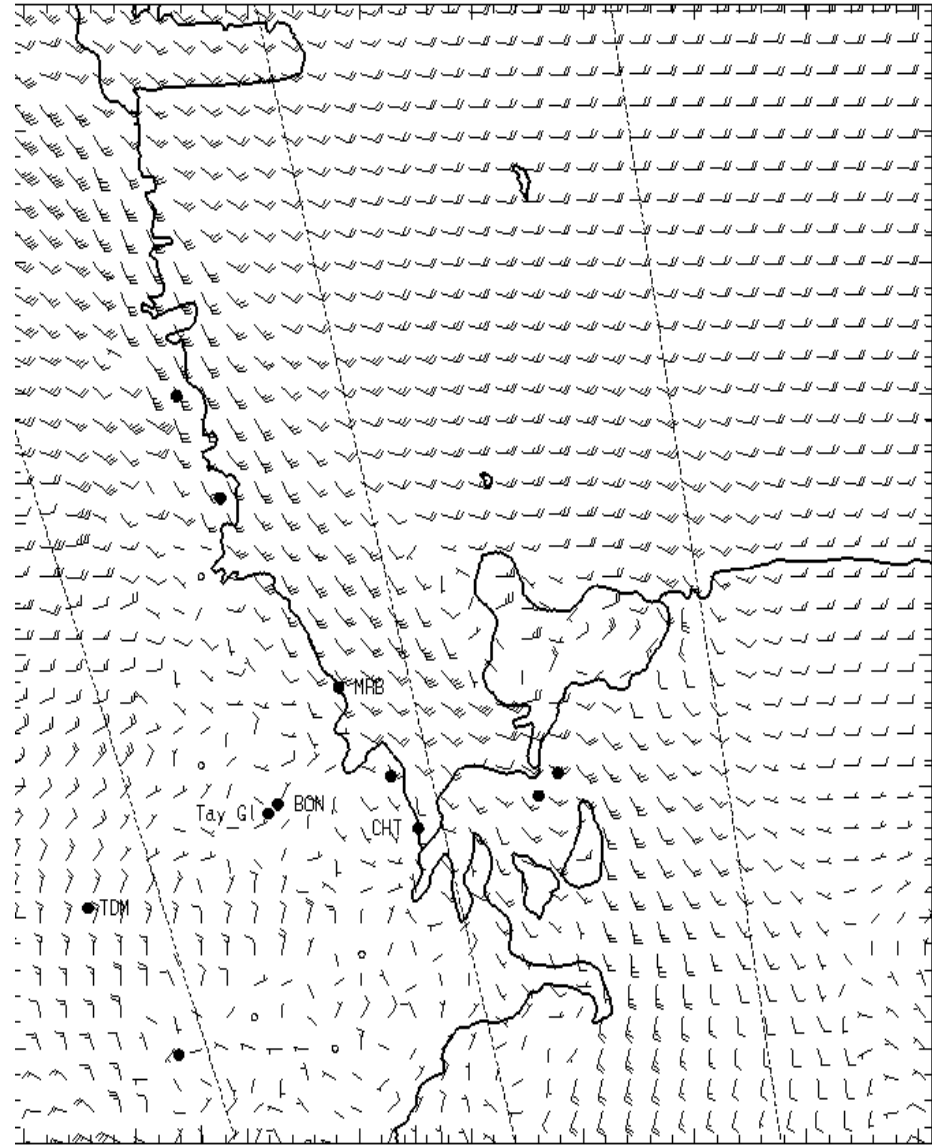


1300L

1,000 ft AGL

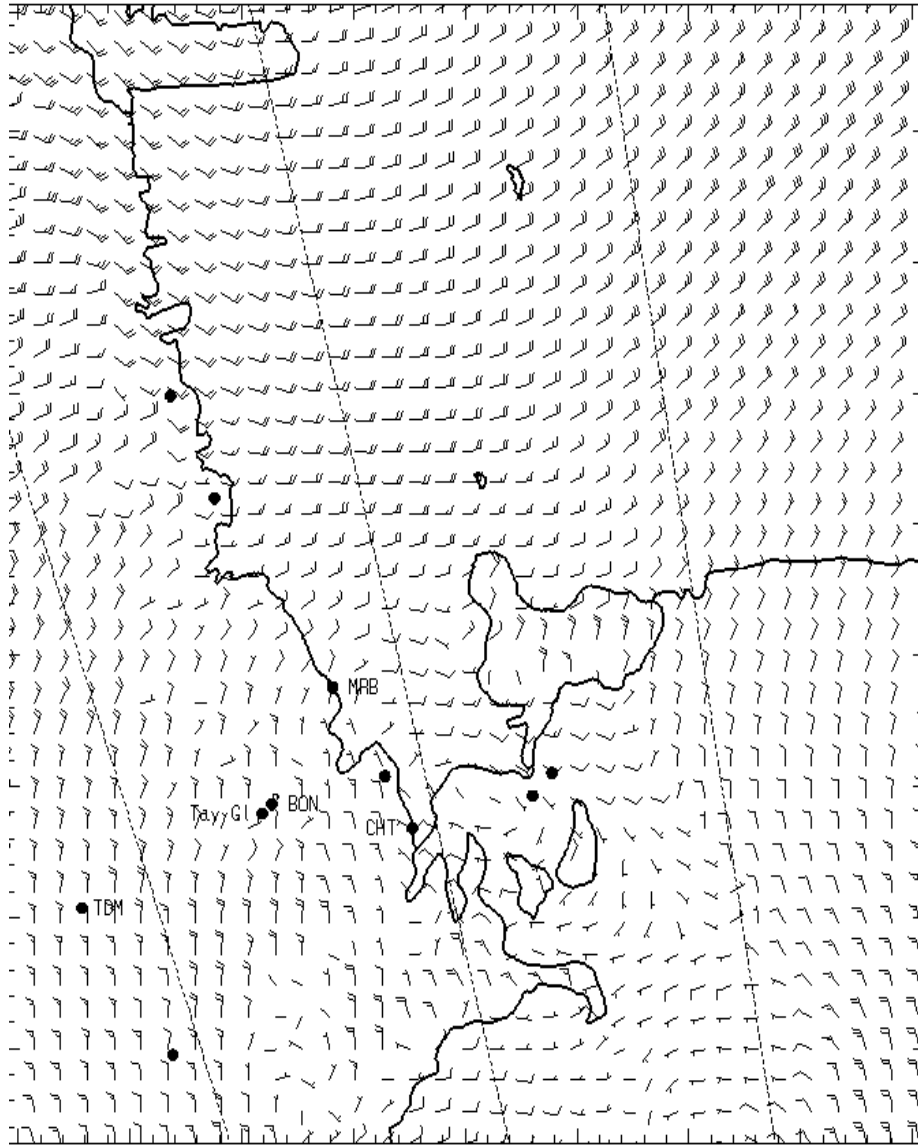


0700L

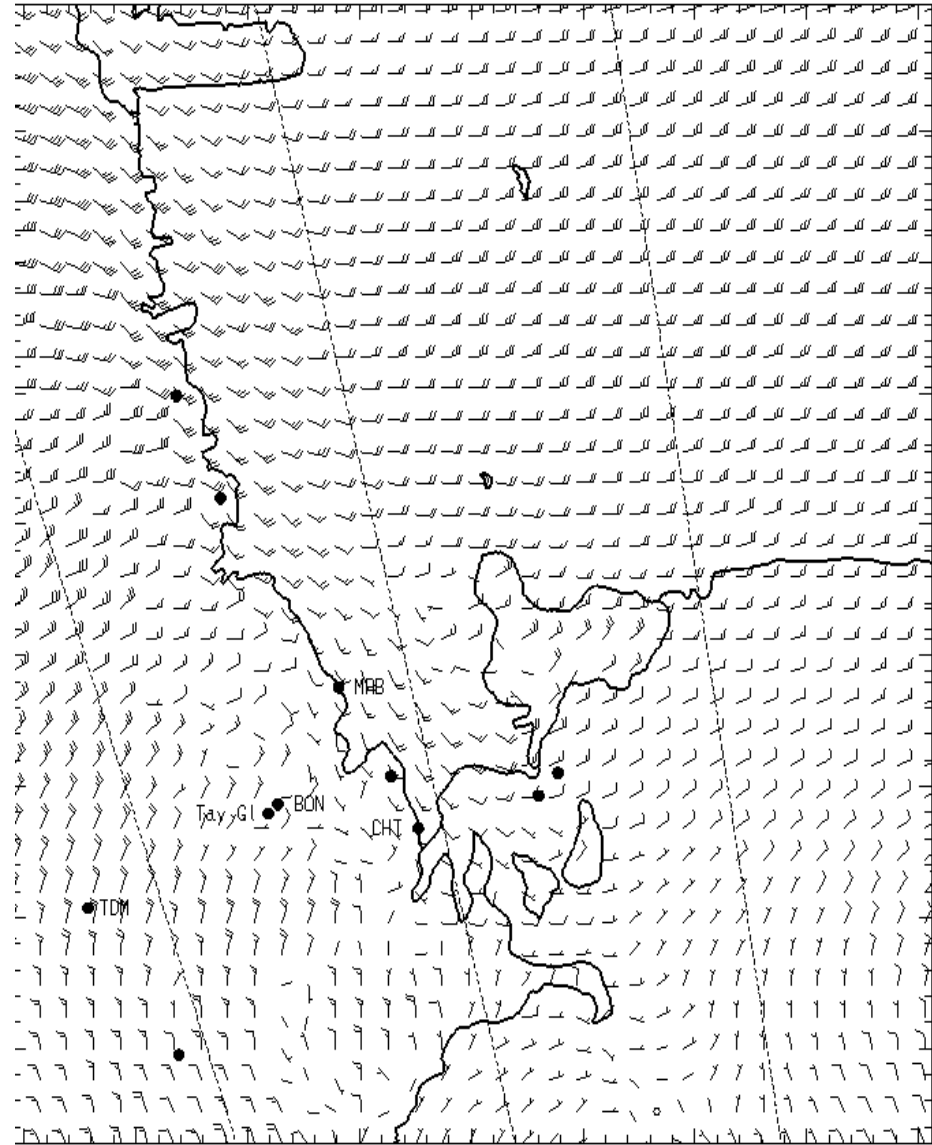


1300L

3,000 ft AGL

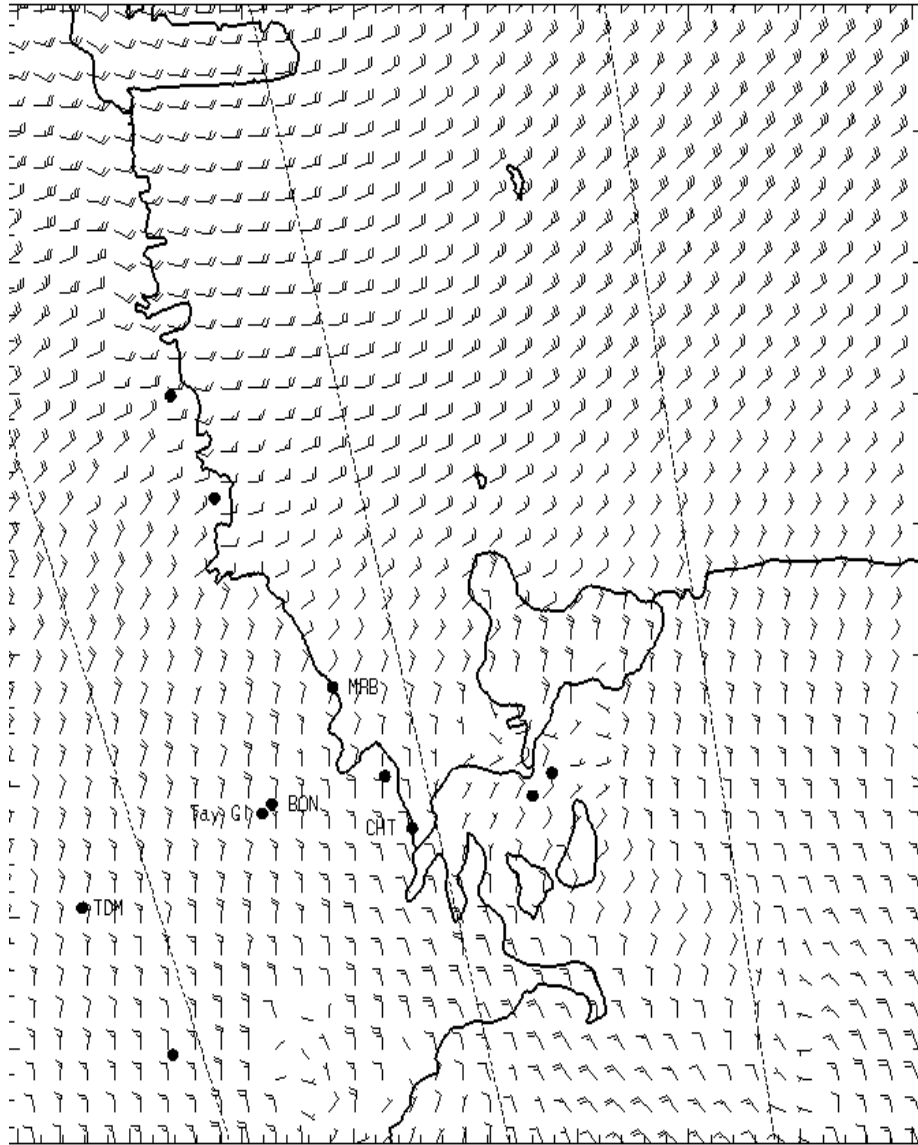


0700L

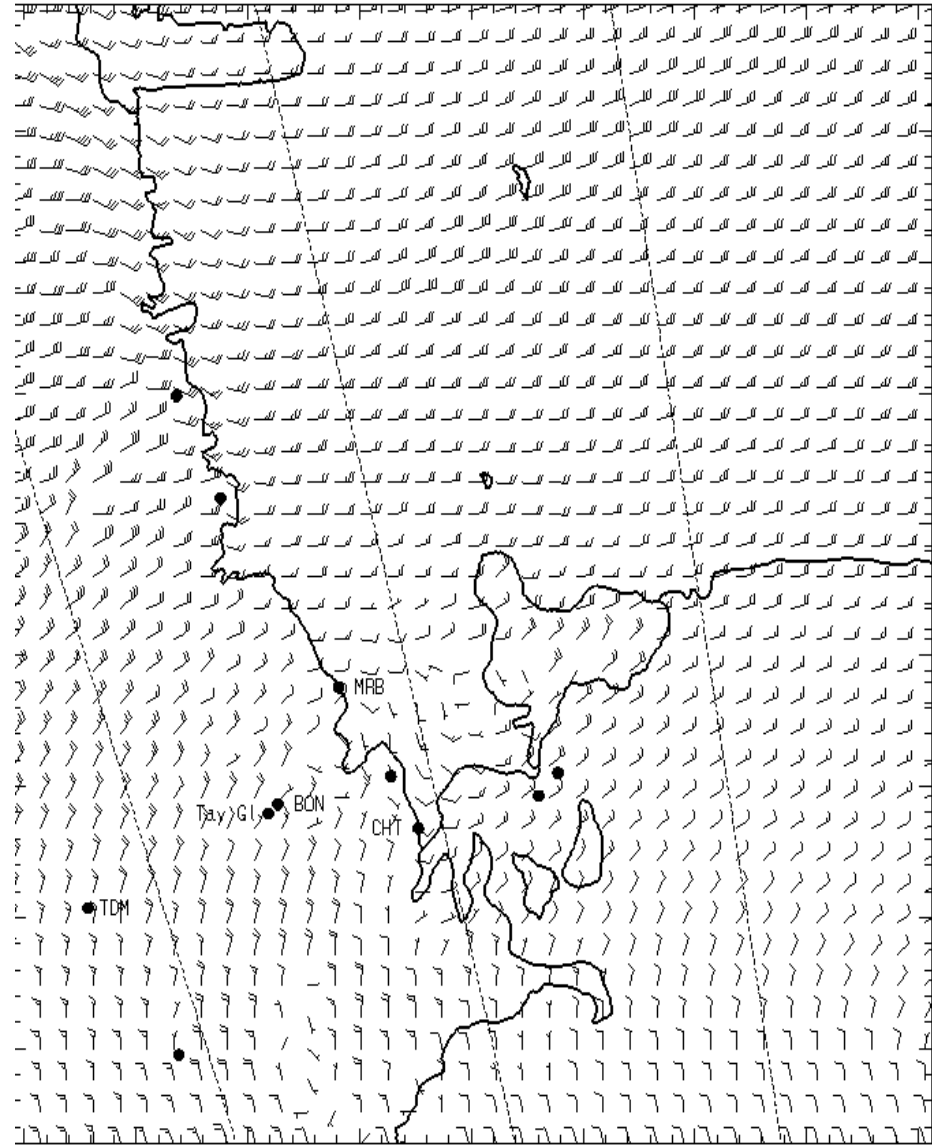


1300L

5,000 ft AGL



0700L



1300L