



Helo Weather

Charleston ROF
Email: weather.chs@usap.gov
Iridium: 011 8816 7631 5168
VOIP: x32664
Charleston ROF: 843-218-3927

Date (L): Tuesday 14 November 2023

Brief Time (L): 0615

Briefing Number: 11-016

FCSTR: Alan Stratton

REGIONAL SUMMARY

A quiet pattern exist over the region, with a small mid-level low circulation south of the Drygalski Ice Tongue supporting some cloudiness over the region.

HAZARDS

NIL

LATEST MCMURDO OBSERVATION

METAR ZCMA 131630Z AUTO 08008KT 9999 OVC050 M13/M24 A2917 RMK AO2 SLP884 GRID24008KT=

RUNWAY TAFS

TAF NZFX 131455Z 1315/1415 (1404/1504NZDT) 07008KT 9999 BKN050 BKN200 QNH2918INS GRID24008KT
BECMG 1318/1320 (1407/1409) VRB05KT 9999 SCT050 SCT100 QNH2920INS WND 07010KT GRID24010KT AFT 1406

TAF NZWD 131455Z 1315/1415 (1404/1504NZDT) 06007KT 9999 FEW020 BKN050 BKN200 QNH2917INS GRID23007KT
BECMG 1316/1318 (1405/1407) VRB05KT 9999 SCT050 SCT100 QNH2920INS WND 06008KT GRID23008KT AFT 1401

MCMURDO HELIPAD FORECAST (VALID TIME: 14/0600L - 1800L)

SFC WIND (TRUE): 04012KT. BECMG 06013G18KT AFT 12L

SFC VISIBILITY (SM): UNRES

SKY CONDITION (AGL): FEW025 SCT050 SCT200

MIN ALSTG: 29.16INS

HAZARDS: NIL

SITE & AREA FORECASTS (VALID TIME: 14/0600L - 1800L)

LAKE HOARE

SFC WIND (TRUE): 08009KT

SFC VISIBILITY (SM): UNRES

SKY CONDITION (AGL): FEW025 SCT200

MIN ALSTG: 29.15INS

HAZARDS: NIL

LAKE BONNEY

SFC WIND (TRUE): VRB05KT. BECMG 04013KT AFT 13L

SFC VISIBILITY (SM): UNRES

SKY CONDITION (AGL): SCT200

MIN ALSTG: 29.15

HAZARDS: NIL

HOWARD GL MET STN (-77 40.265 163 4.7038)

SFC WIND (TRUE): 01006KT

SFC VISIBILITY (SM): UNRES. TEMPO 3-5 BR AFT 12L

SKY CONDITION (AGL): FEW005 SCT050. BECMG BKN005 AFT 12L

MIN ALSTG: 29.03INS

HAZARDS: NIL

CANADA GL MET STN (-77 36.789 162 57.8812)

SFC WIND (TRUE): 09009KT

SFC VISIBILITY (SM): UNRES

SKY CONDITION (AGL): FEW020 SCT050

MIN ALSTG: 29.10INS

HAZARDS: NIL

AWS C106 CAPE ROYDS

SFC WIND (TRUE): 20008KT

SFC VISIBILITY (SM): UNRES

SKY CONDITION (AGL): BKN020. BECMG FEW025 SCT050 SCT200 AFT 12L

MIN ALSTG: 29.15INS

HAZARDS: NIL

AWS C101 TENT ISLAND

SFC WIND (TRUE): 13017G25KT

SFC VISIBILITY (SM): UNRES

SKY CONDITION (AGL): FEW025 SCT050 SCT200

MIN ALSTG: 29.16INS

HAZARDS: NIL

BLACK ISLAND

SFC WIND (TRUE): VRB05KT

SFC VISIBILITY (SM): UNRES

SKY CONDITION (AGL): FEW025 SCT050 SCT200

MIN ALSTG: 29.17INS

HAZARDS: NIL

SCOTT BASE

SFC WIND (TRUE): 04007KT

SFC VISIBILITY (SM): UNRES

SKY CONDITION (AGL): FEW025 SCT050 SCT200

MIN ALSTG: 29.17INS

HAZARDS: NIL

TRAMWAY RIDGE

SFC WIND (TRUE): 35013G18KT

SFC VISIBILITY (SM): UNRES. BECMG <1-2 SG BR AFT 17L

SKY CONDITION (AGL): SCT200. BECMG OVC003 AFT 17L

MIN ALSTG: 28.25INS

HAZARDS: NIL

LEWIS BAY (ASPA 156)

SFC WIND (TRUE): VRB05KT

SFC VISIBILITY (SM): UNRES, VC BR. TEMPO 1-3 BR 08-12L

SKY CONDITION (AGL): SCT015 SCT050

MIN ALSTG: 29.16INS

HAZARDS: NIL

MCMURDO SEA ICE DELTA (-77 20.2962 165 11.289)

SFC WIND (TRUE): 17013KT

SFC VISIBILITY (SM): UNRES

SKY CONDITION (AGL): SCT025 BKN050. BECMG FEW025 SCT050 SCT200 AFT 12L

MIN ALSTG: 29.16INS

HAZARDS: NIL

MCMURDO SEA ICE (-77 40.1567 165 11.998)

SFC WIND (TRUE): 17013KT

SFC VISIBILITY (SM): UNRES

SKY CONDITION (AGL): SCT025 BKN050. BECMG FEW025 SCT050 SCT200 AFT 12L

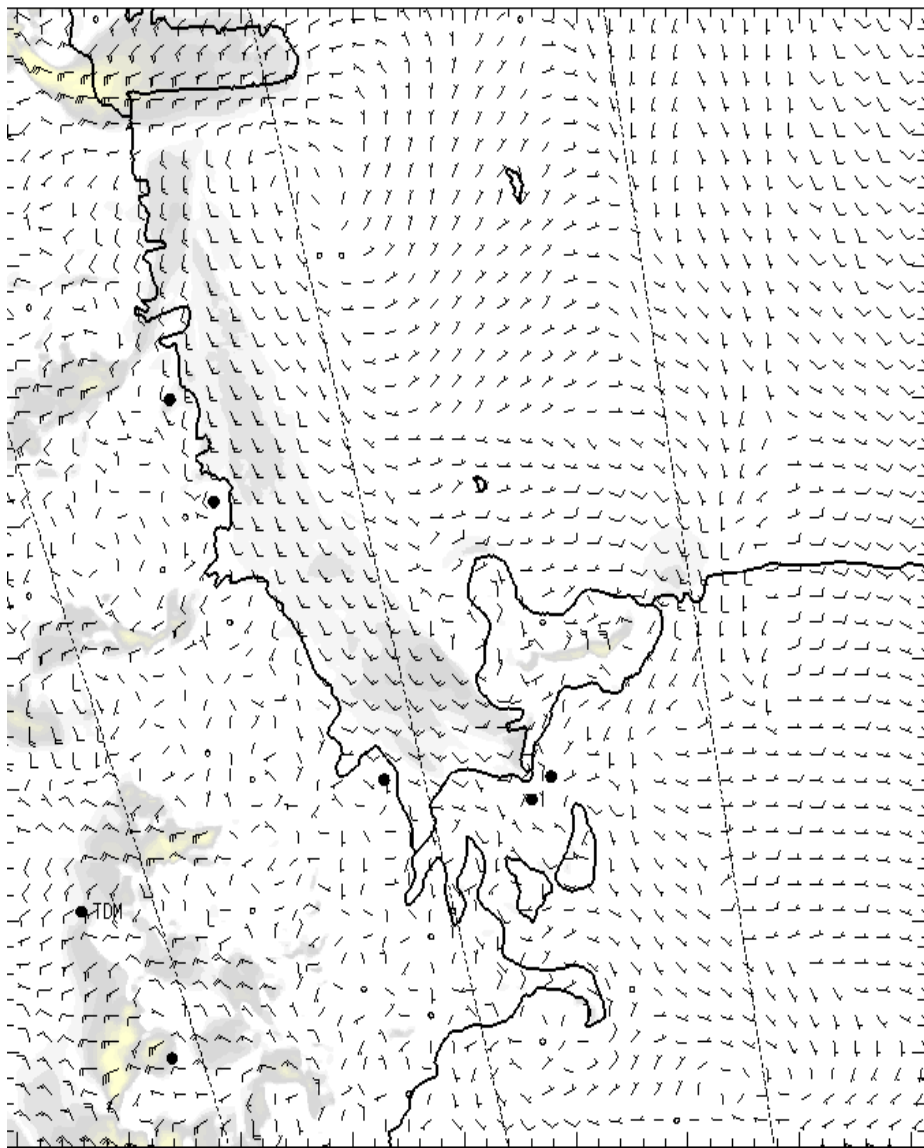
MIN ALSTG: 29.16INS

HAZARDS: NIL

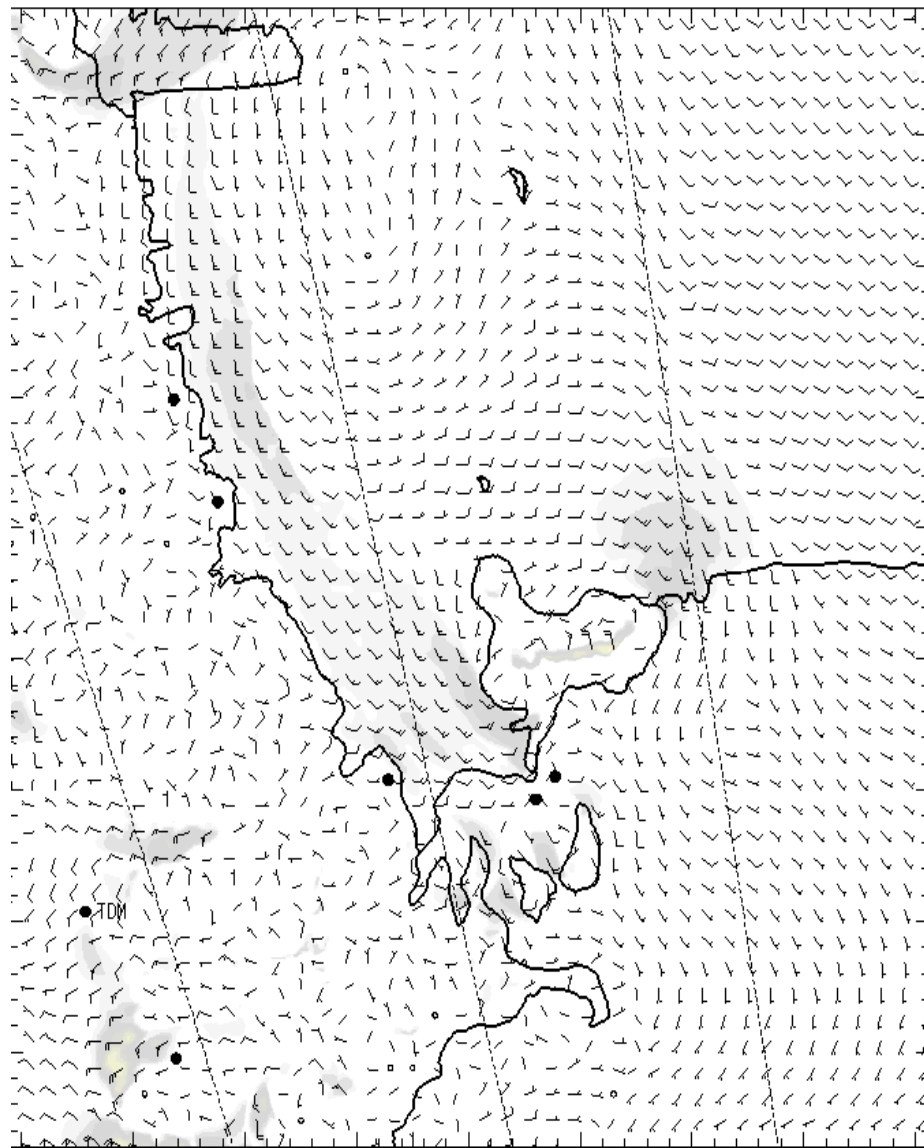
NIGHT SITE & AREA FORECASTS (VALID TIME: 14/1800L – 15/0600L)

NIL

SFC

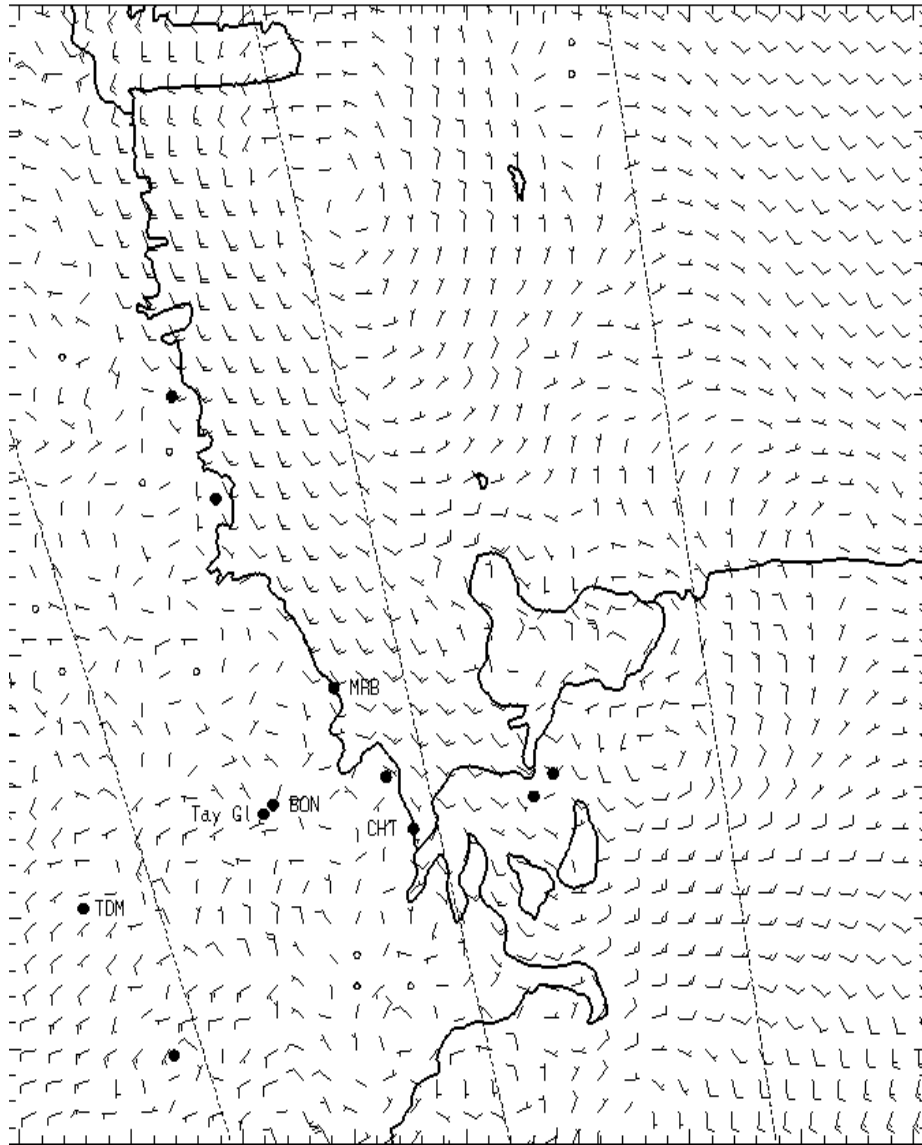


0700L

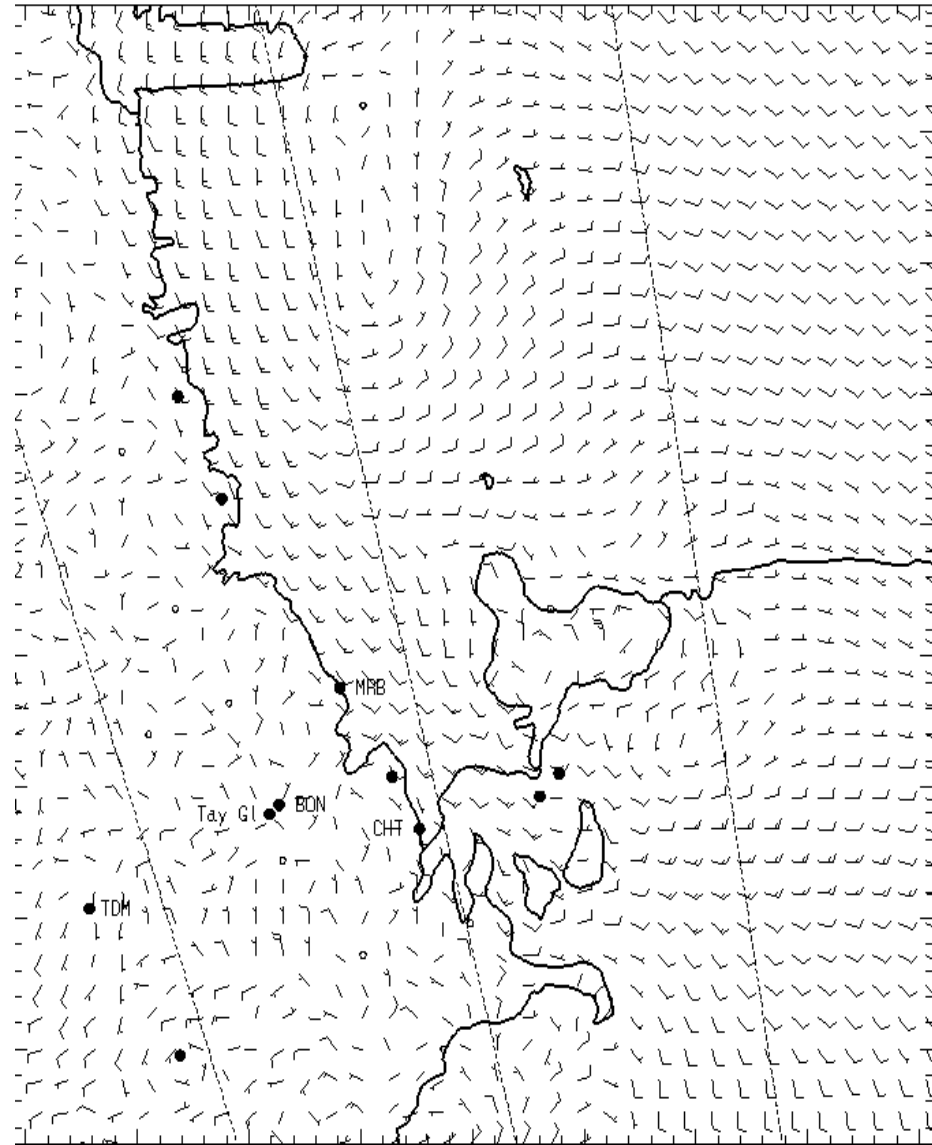


1300L

1,000 ft AGL

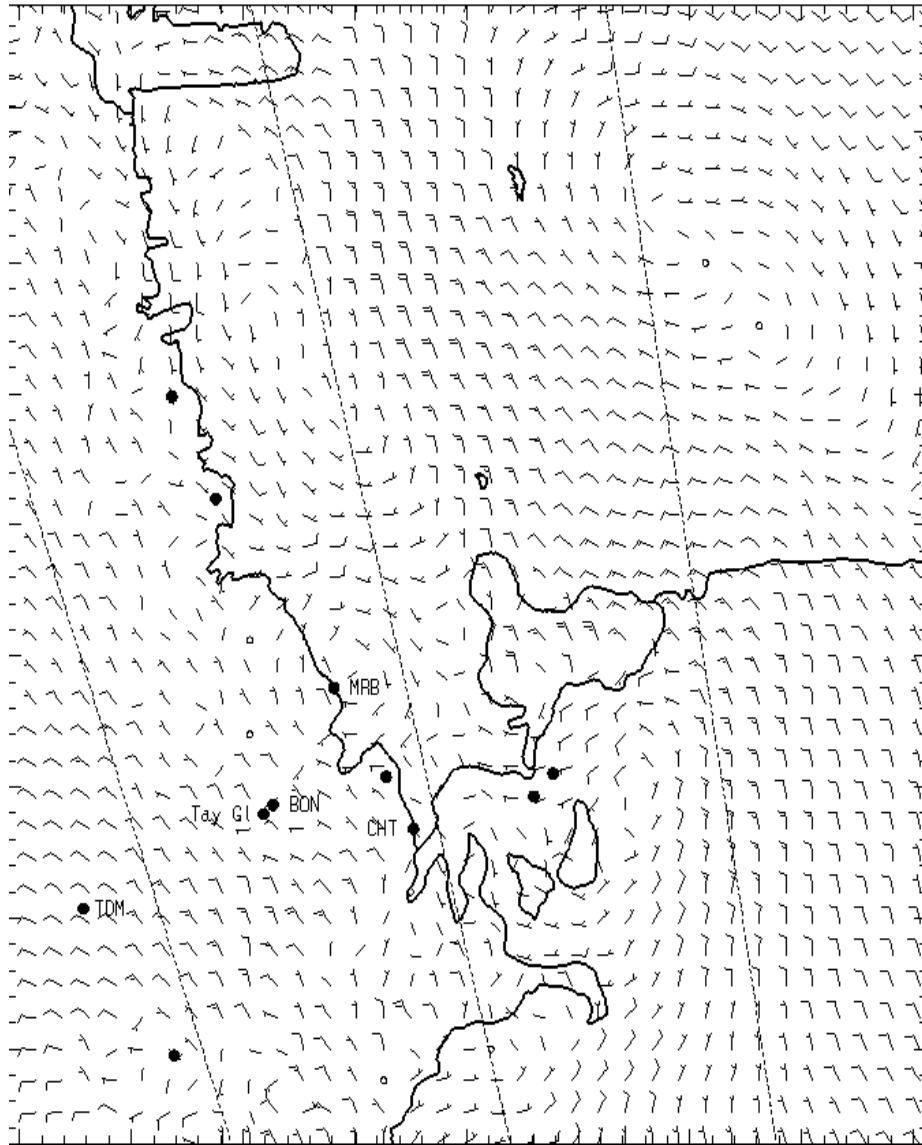


0700L

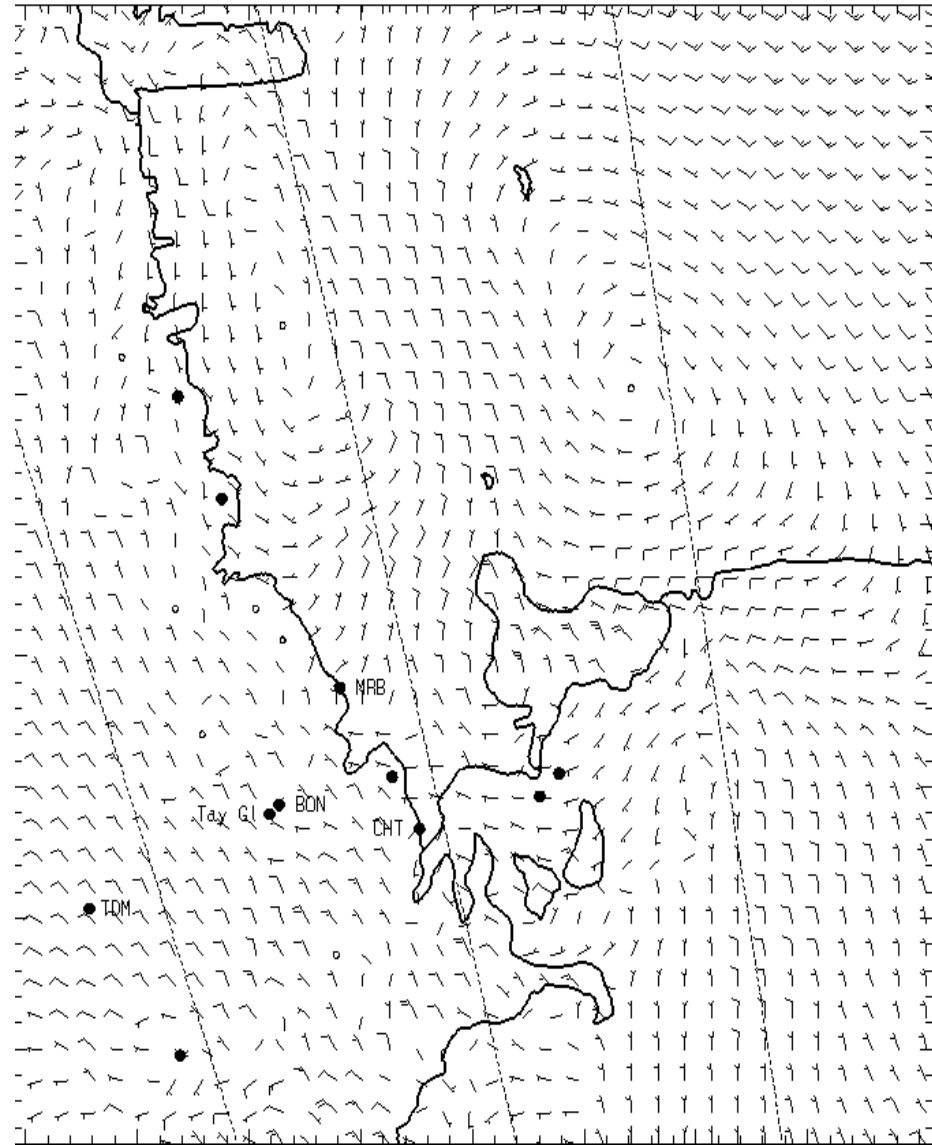


1300L

3,000 ft AGL

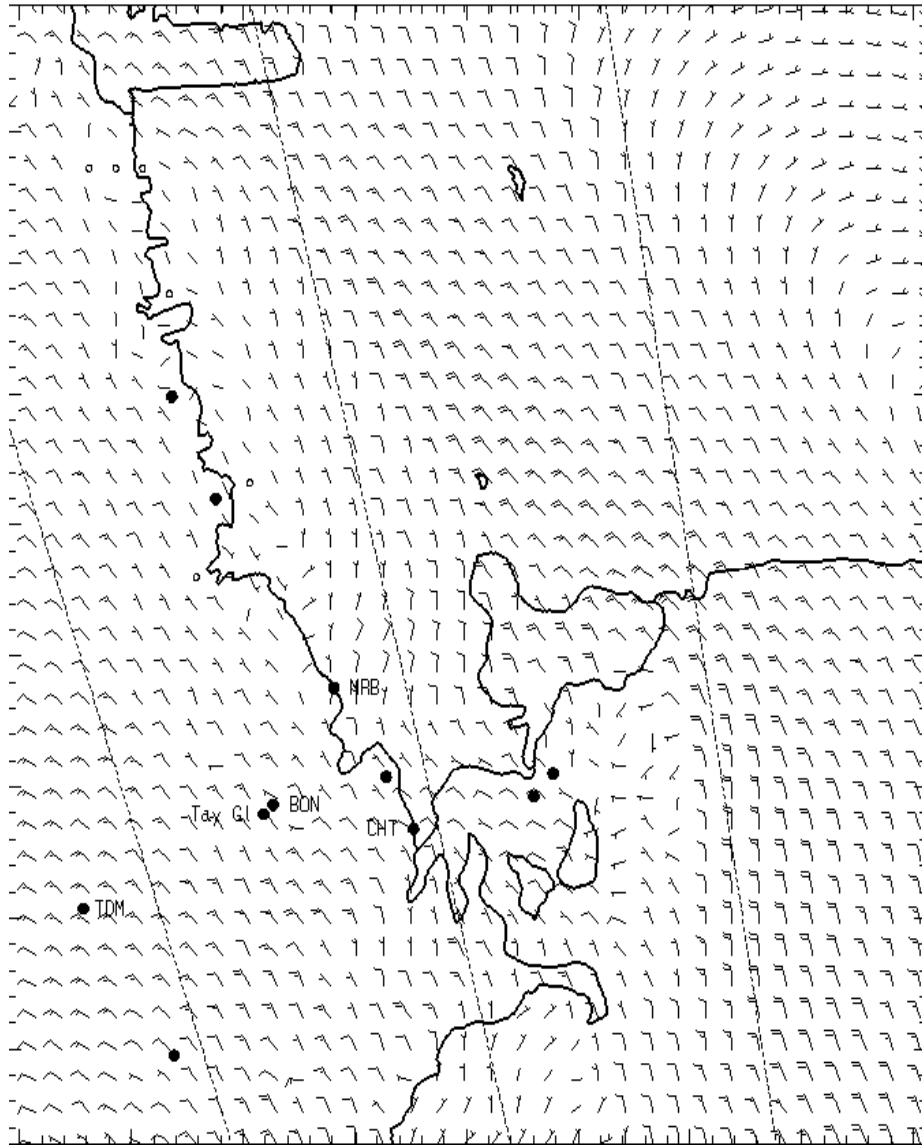


0700L

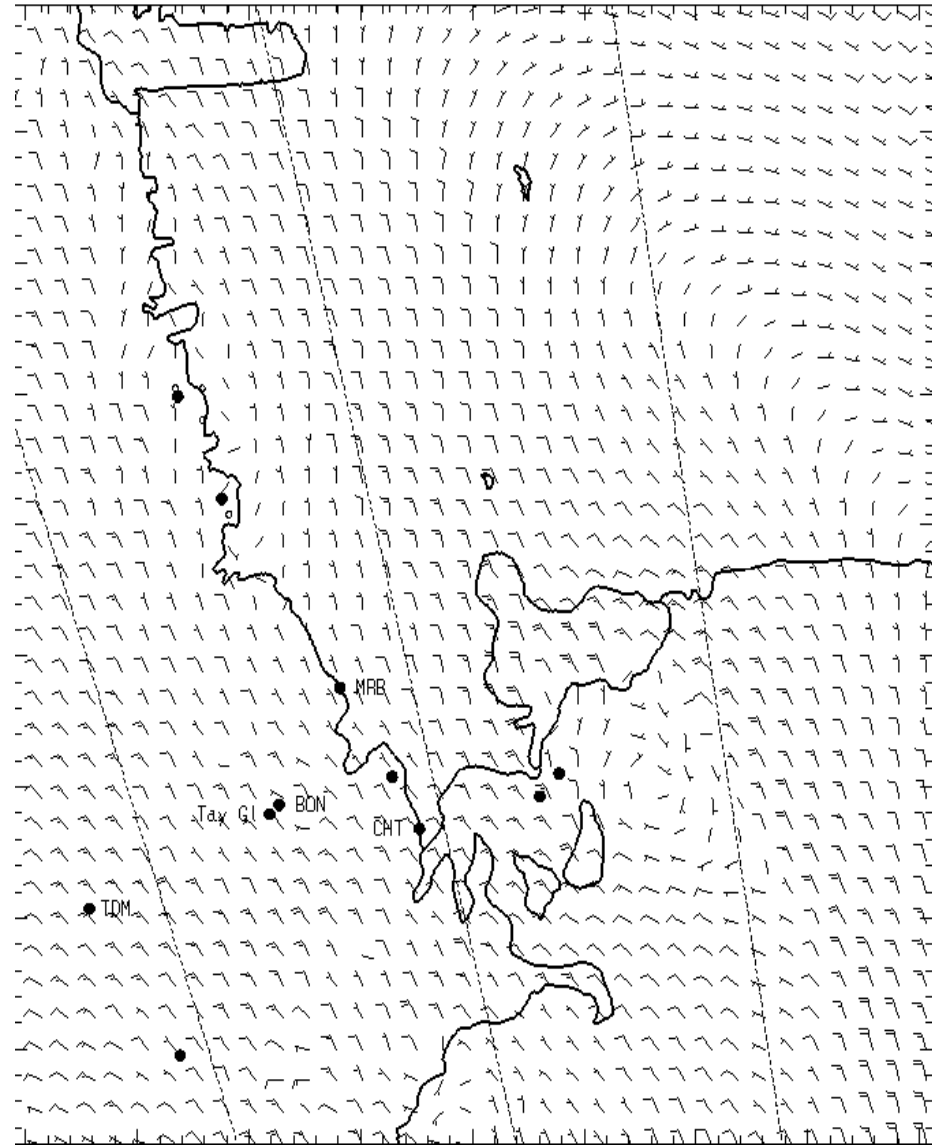


1300L

5,000 ft AGL



0700L



1300L