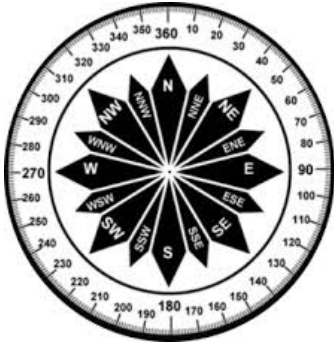


# FLEET OPS 5-DAY PLANNING WEATHER

DATE	Friday, November 5, 2021				Saturday, November 6, 2021				Sunday, November 7, 2021				Monday, November 8, 2021				Tuesday, November 9, 2021				
SKY CONDITIONS	Partly Cloudy		Partly Cloudy		Mostly Clear		Mostly Clear		Partly Cloudy		Partly Cloudy		Partly Cloudy		Mostly Cloudy		Mostly Cloudy		Mostly Cloudy		
WEATHER & VISIBILITY	B, W																				
TEMPS (LOW/HIGH)	-17°C		-09°C		-18°C		-11°C		-19°C		-10°C		-18°C		-08°C		-18°C		-10°C		
TRUE WINDS (KTS)	NE 10-15		SW-SE 15-20 G35		SW-SE 10-15 G30		S-SE 10-15 G20		VRB 8-12		NW-NE 10-15 G20		SW-SE 20-30 G45		SW-SE 20-30 G50		SW-SE 10-20 G25		NW-NE 12-18 G22		
WIND CHILL	-28°C		-19°C		-30°C		-20°C		-30°C		-19°C		-33°C		-19°C		-31°C		-20°C		
TIME (LOCAL)	00	06	12	18	00	06	12	18	00	06	12	18	00	06	12	18	00	06	12	18	00

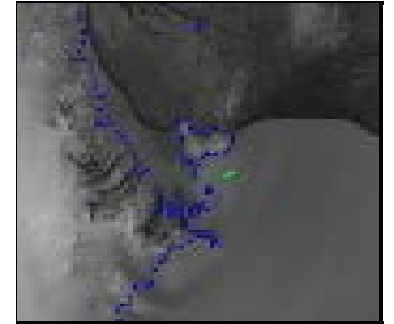


VRB- Variable Winds

UPDATED: Friday, November 5, 2021

Forecast Covers All ICE Areas (McMurdo Ice Shelf Roads/Airfields/LDB Site)

ABOVE	Visibility $\geq$ 1/4mi, Winds < 48kt or Wind Chill warmer than -59°C
MARGINAL	Visibility < 1/4 mile but $\geq$ 100ft, Winds 48-55kt or Wind Chill -59°C to -73°C
BELOW	Vis < 100ft, Winds >55kt or Wind Chill below -73°C



F- Fog

S-Snow

B-Blowing Snow

D-Drifting Snow

IC-Ice Crystals

W-Winds

BR-Mist