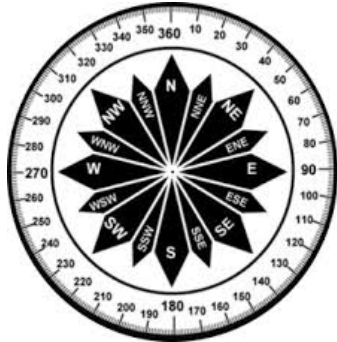


FLEET OPS 5-DAY PLANNING WEATHER

DATE	Monday, October 11, 2021				Tuesday, October 12, 2021				Wednesday, October 13, 2021				Thursday, October 14, 2021				Friday, October 15, 2021				
SKY CONDITIONS	Mostly Cloudy		Mostly Cloudy		Partly Cloudy		Partly Cloudy		Partly Cloudy		Mostly Cloudy		Mostly Cloudy		Mostly Cloudy		Partly Cloudy		Partly Cloudy		
WEATHER & VISIBILITY																					
TEMPS (LOW/HIGH)	-23°C		-19°C		-25°C		-20°C		-26°C		-20°C		-24°C		-16°C		-23°C		-18°C		
TRUE WINDS (KTS)	NE 10-15		NE 10-15 G25		SE 10-15 G25		NE 8-12		VRB 5-10		VRB 5-10		E-SE 10-15 G20		SE 10-15 G25		N-NE 8-12		VRB 5-10		
WIND CHILL	-36°C		-31°C		-33°C		-31°C		-38°C		-30°C		-37°C		-22°C		-35°C		-28°C		
TIME (LOCAL)	00	06	12	18	00	06	12	18	00	06	12	18	00	06	12	18	00	06	12	18	00

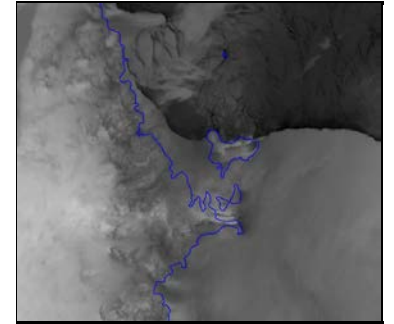


VRB- Variable Winds

UPDATED: Monday, October 11, 2021

Forecast Covers All ICE Areas (McMurdo Ice Shelf Roads/Airfields/LDB Site)

ABOVE	Visibility \geq 1/4mi, Winds < 48kt or Wind Chill warmer than -59°C
MARGINAL	Visibility < 1/4 mile but \geq 100ft, Winds 48-55kt or Wind Chill -59°C to -73°C
BELOW	Vis < 100ft, Winds >55kt or Wind Chill below -73°C



F- Fog

S-Snow

B-Blowing Snow

D-Drifting Snow

IC-Ice Crystals

W-Winds

BR-Mist