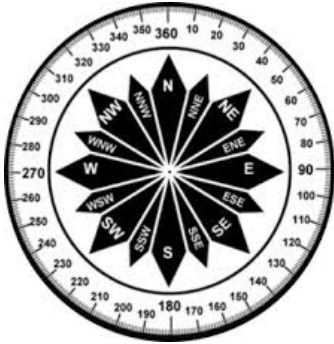


FLEET OPS 5-DAY PLANNING WEATHER

DATE	Thursday, October 14, 2021				Friday, October 15, 2021				Saturday, October 16, 2021				Sunday, October 17, 2021				Monday, October 18, 2021				
SKY CONDITIONS	Mostly Cloudy		Mostly Cloudy		Partly Cloudy		Partly Cloudy		Mostly Cloudy		Mostly Cloudy		Mostly Cloudy		Mostly Cloudy		Mostly Cloudy		Mostly Cloudy		
WEATHER & VISIBILITY																	S, BS				
TEMPS (LOW/HIGH)	-25°C		-19°C		-29°C		-18°C		-26°C		-19°C		-25°C		-17°C		-21°C		-14°C		
TRUE WINDS (KTS)	VRB 5-10		E-SE 8-12 G18		E-SE 8-12		SE-S 15-20 G30		E-SE 8-12 G20		SE-S 10-15 G25		NE-E 10-15		NE-SE 10-15 G25		S-SE 20-25 G45		S 20-25 G50		
WIND CHILL	-2°C		-30°C		-42°C		-31°C		-39°C		-31°C		-39°C		-28°C		-36°C		-27°C		
TIME (LOCAL)	00	06	12	18	00	06	12	18	00	06	12	18	00	06	12	18	00	06	12	18	00

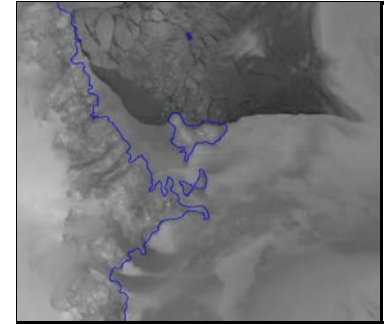


VRB- Variable Winds

UPDATED: Thursday, October 14, 2021

Forecast Covers All ICE Areas (McMurdo Ice Shelf Roads/Airfields/LDB Site)

ABOVE	Visibility \geq 1/4mi, Winds < 48kt or Wind Chill warmer than -59°C
MARGINAL	Visibility < 1/4 mile but \geq 100ft, Winds 48-55kt or Wind Chill -59°C to -73°C
BELOW	Vis < 100ft, Winds >55kt or Wind Chill below -73°C



F- Fog

S-Snow

B-Blowing Snow

D-Drifting Snow

IC-Ice Crystals

W-Winds

BR-Mist