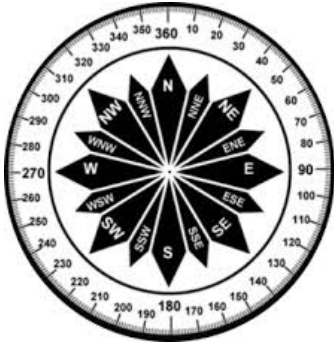


FLEET OPS 5-DAY PLANNING WEATHER

DATE	Monday, October 25, 2021				Tuesday, October 26, 2021				Wednesday, October 27, 2021				Thursday, October 28, 2021				Friday, October 29, 2021				
SKY CONDITIONS	Mostly Cloudy		Mostly Cloudy		Mostly Cloudy		Mostly Cloudy		Partly Cloudy		Partly Cloudy		Mostly Cloudy		Partly Cloudy		Mostly Cloudy		Mostly Cloudy		
WEATHER & VISIBILITY	S, B				S, B				BR				S, B								
TEMPS (LOW/HIGH)	-23°C		-14°C		-22°C		-12°C		-20°C		-14°C		-22°C		-15°C		-20°C		-14°C		
TRUE WINDS (KTS)	SE 10-15		SE 10-15 G35		NE-SE 12-18 G25		NE-SE 15-20 G25		VRB 4-8		VRB 8-12		E-SE 8-12		SE 10-15 G25		E-SE 10-20 G30		E-SE 10-20 G35		
WIND CHILL	-36°C		-24°C		-36°C		-23°C		-29°C		-23°C		-34°C		-26°C		-34°C		-26°C		
TIME (LOCAL)	00	06	12	18	00	06	12	18	00	06	12	18	00	06	12	18	00	06	12	18	00

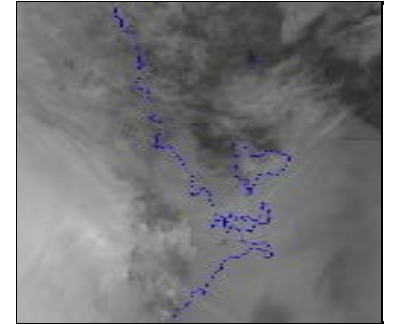


VRB- Variable Winds

UPDATED: Monday, October 25, 2021

Forecast Covers All ICE Areas (McMurdo Ice Shelf Roads/Airfields/LDB Site)

ABOVE	Visibility \geq 1/4mi, Winds < 48kt or Wind Chill warmer than -59°C
MARGINAL	Visibility < 1/4 mile but \geq 100ft, Winds 48-55kt or Wind Chill -59°C to -73°C
BELOW	Vis < 100ft, Winds >55kt or Wind Chill below -73°C



F- Fog

S-Snow

B-Blowing Snow

D-Drifting Snow

IC-Ice Crystals

W-Winds

BR-Mist