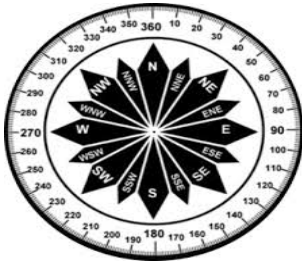


PHOENIX AIRFIELD 5 DAY PLANNING WEATHER

DATE	Wednesday, August 14, 2024				Thursday, August 15, 2024				Friday, August 16, 2024				Saturday, August 17, 2024				Sunday, August 18, 2024				
SKY CONDITIONS	Mostly Clear		Mostly Clear		Partly Cloudy		Partly Cloudy		Partly Cloudy		Partly Cloudy		Mostly Cloudy		Cloudy		Cloudy		Cloudy		
WEATHER & VISIBILITY									B				S, B								
TEMPERATURE																					
TRUE WINDS (KTS)	E-SE 10-15	G25	E-SE 5-10		E-SE 5-10		E-SE 10-15	G20	SE-S 20-25	G45	SE-S 20-25	G45	VRB 5-10		S 20-25	G50	S 25-35	G65	S 20-30	G45	
TIME (LOCAL)	00	06	12	18	00	06	12	18	00	06	12	18	00	06	12	18	00	06	12	18	00



UPDATED: Wednesday, August 14, 2024

ABOVE	Visibility > 7 miles, Ceilings > 3000ft, Temps > -40°C
MARGINAL	Ceilings < 3000ft but > 1000ft
BELOW	Vis < 7 miles, Ceilings < 1000ft, Temps < -40°C, X-Winds > 30kt

- B-Blowing Snow

BR-Mist

CIG - Ceiling

D-Drifting Snow

F- Fog

IC-Ice Crystals
- S-Snow

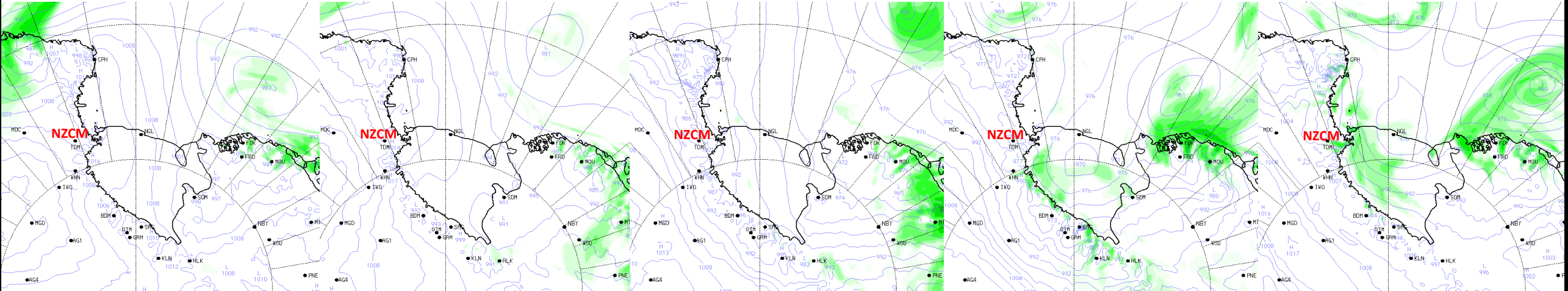
T - Temperature

VRB- Variable Winds

W-Winds

WC-Wind Chill

XW - Crosswinds



30

48

72

96

120