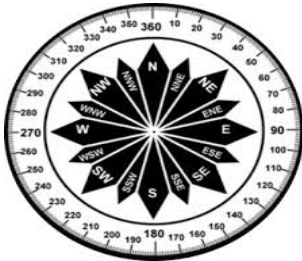


PHOENIX AIRFIELD 5 DAY PLANNING WEATHER

DATE	Thursday, August 15, 2024				Friday, August 16, 2024				Saturday, August 17, 2024				Sunday, August 18, 2024				Monday, August 19, 2024																							
SKY CONDITIONS	Partly Cloudy		Partly Cloudy		Partly Cloudy		Partly Cloudy		Mostly Cloudy		Cloudy		Cloudy		Cloudy		Cloudy		Mostly Cloudy																					
WEATHER & VISIBILITY					B								S, B																											
TEMPERATURE																																								
TRUE WINDS (KTS)	NE-E 10-15				NE-E 10-15				NE-SE 20-25		G40		SE-S 15-20		G30		VRB 5-10				S 20-25		G50		S 25-35		G60		S 25-30		G55		SE-S 15-25		G45		NE-SE 15-20			
TIME (LOCAL)	00	06	12	18	00	06	12	18	00	06	12	18	00	06	12	18	00	06	12	18	00	06	12	18	00	06	12	18	00	06	12	18	00	06	12	18	00			



UPDATED: Thursday, August 15, 2024

ABOVE	Visibility > 7 miles, Ceilings > 3000ft, Temps > -40°C
MARGINAL	Ceilings < 3000ft but > 1000ft
BELOW	Vis < 7 miles, Ceilings < 1000ft, Temps < -40°C, X-Winds > 30kt

- B-Blowing Snow

BR-Mist

CIG - Ceiling

D-Drifting Snow

F- Fog

IC-Ice Crystals
- S-Snow

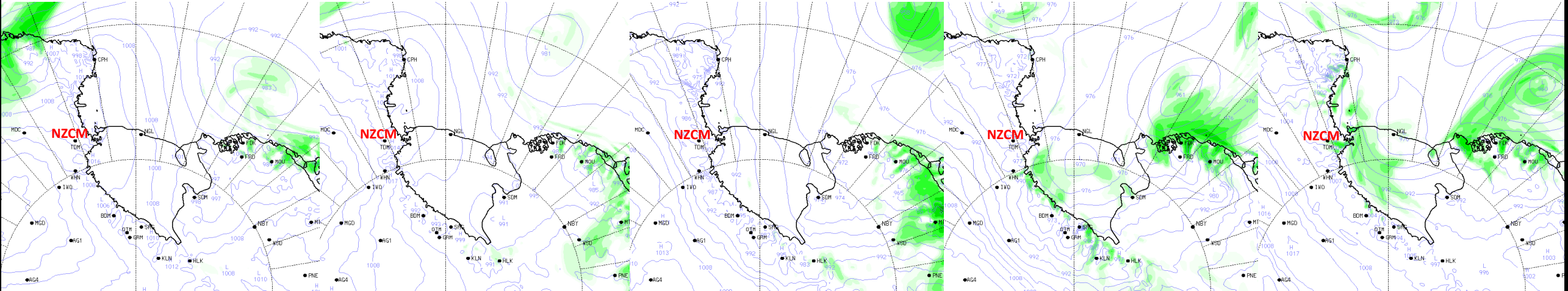
T - Temperature

VRB- Variable Winds

W-Winds

WC-Wind Chill

XW - Crosswinds



30

48

72

96

120