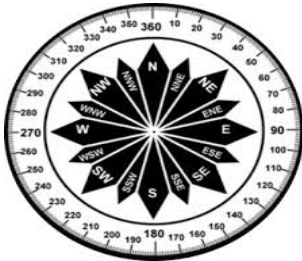


PHOENIX AIRFIELD 5 DAY PLANNING WEATHER

DATE	Tuesday, August 20, 2024				Wednesday, August 21, 2024				Thursday, August 22, 2024				Friday, August 23, 2024				Saturday, August 24, 2024				
SKY CONDITIONS	Partly Cloudy		Mostly Cloudy		Cloudy		Mostly Cloudy		Partly Cloudy		Partly Cloudy		Partly Cloudy		Partly Cloudy		Partly Cloudy		Partly Cloudy		
WEATHER & VISIBILITY			CIG, S		CIG, S, B		CIG, S				BR								BR		
TEMPERATURE																					
TRUE WINDS (KTS)	NE 5-10		VRB 5-10		S 15-25		G30		SE 10-15		G25		VRB 5-10		VRB 5-10		VRB 5-10		VRB 5-10		
TIME (LOCAL)	00	06	12	18	00	06	12	18	00	06	12	18	00	06	12	18	00	06	12	18	00



UPDATED: Tuesday, August 20, 2024

ABOVE	Visibility \geq 7 miles, Ceilings \geq 3000ft, Temps \geq -40°C
MARGINAL	Visibility $<$ 7 miles but \geq 3 miles, Ceilings $<$ 3000ft but \geq 1000ft
BELOW	Vis $<$ 3 miles, Ceilings $<$ 1000ft, Temps $<$ M40°C, X-Winds $>$ 30kt

- B-Blowing Snow

BR-Mist

CIG - Ceiling

D-Drifting Snow

F- Fog

IC-Ice Crystals
- S-Snow

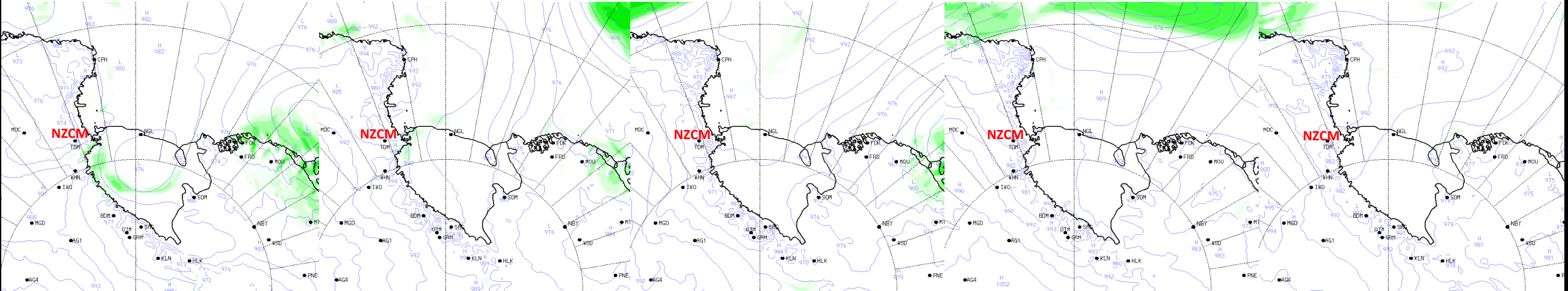
T - Temperature

VRB- Variable Winds

W-Winds

WC-Wind Chill

XW - Crosswinds



30

48

72

96

120