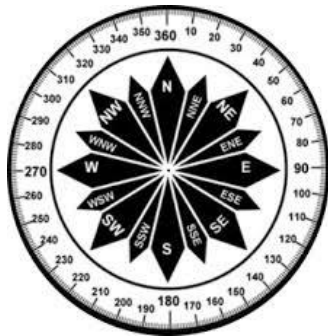


FLEET OPS 5-DAY PLANNING WEATHER

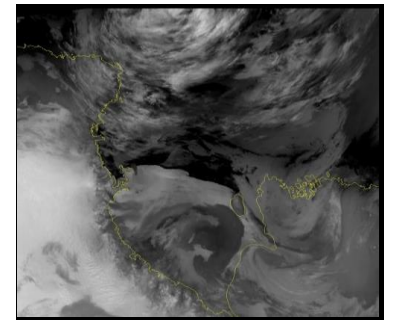
DATE	Thursday, June 13, 2024				Friday, June 14, 2024				Saturday, June 15, 2024				Sunday, June 16, 2024				Monday, June 17, 2024				
SKY CONDITIONS	Mostly Clear		Mostly Clear		Partly Cloudy		Mostly Cloudy		Mostly Cloudy		Mostly Cloudy		Partly Cloudy		Cloudy		Cloudy				
WEATHER & VISIBILITY			B,S						B				B								
TEMPS (LOW/HIGH)	-27°C		-24°C		-27°C		-23°C		-30°C		-25°C		-26°C		-22°C		-22°C		-27°C		
TRUE WINDS (KTS)	E 10-15		S 20-30 G45		S 25-35 G55		S 20-30 G45		NE 10-15		S 20-25 G35		S 10-20 G30		SW 10-15 G25		S 10-15		NE 15-20		
WIND CHILL	-41°C		-41°C		-47°C		-40°C		-45°C		-42°C		-42°C		-35°C		-35°C		-43°C		
TIME (LOCAL)	00	06	12	18	00	06	12	18	00	06	12	18	00	06	12	18	00	06	12	18	00



UPDATED: Thursday, June 13, 2024

Forecast Covers All ICE Areas (McMurdo Ice Shelf Roads/Airfields/LDB Site)

ABOVE	Visibility \geq 1/4mi, Winds < 48kt or Wind Chill warmer than -59°C
MARGINAL	Visibility < 1/4 mile but \geq 100ft, Winds 48-55kt or Wind Chill -59°C to -73°C
BELOW	Vis < 100ft, Winds >55kt or Wind Chill below -73°C



VRB- Variable Winds

F- Fog

S-Snow

B-Blowing Snow

D-Drifting Snow

IC-Ice Crystals

W-Winds

BR-Mist