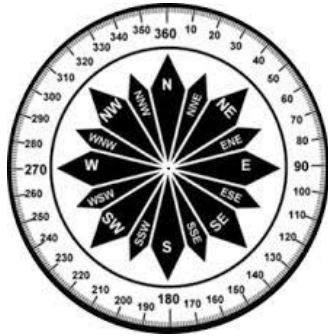


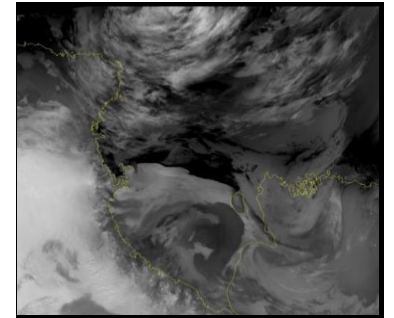
FLEET OPS 5-DAY PLANNING WEATHER

DATE	Tuesday, June 18, 2024				Wednesday, June 19, 2024				Thursday, June 20, 2024				Friday, June 21, 2024				Saturday, June 22, 2024				
SKY CONDITIONS	Cloudy		Cloudy		Mostly Cloudy		Mostly Cloudy		Partly Cloudy		Partly Cloudy		Partly Cloudy		Mostly Cloudy		Partly Cloudy		Partly Cloudy		
WEATHER & VISIBILITY	B,S																				
TEMPS (LOW/HIGH)	-24°C		-19°C		-28°C		-24°C		-25°C		-22°C		-20°C		-18°C		-23°C		-20°C		
TRUE WINDS (KTS)	NE 10-15		NE 10-15		NE 5-10		NE 5-10		S 5-10		SW 15-20		SW 15-25 G35		S 20-30 G40		SW 15-20		NE 5-10		
WIND CHILL	-37°C		-31°C		-40°C		-35°C		-36°C		-36°C		-35°C		-33°C		-38°C		-30°C		
TIME (LOCAL)	00	06	12	18	00	06	12	18	00	06	12	18	00	06	12	18	00	06	12	18	00



UPDATED: Tuesday, June 18, 2024

Forecast Covers All ICE Areas (McMurdo Ice Shelf Roads/Airfields/LDB Site)



ABOVE	Visibility \geq 1/4mi, Winds < 48kt or Wind Chill warmer than -59°C
MARGINAL	Visibility < 1/4 mile but \geq 100ft, Winds 48-55kt or Wind Chill -59°C to -73°C
BELOW	Vis < 100ft, Winds >55kt or Wind Chill below -73°C

VRB- Variable Winds

F- Fog

S-Snow

B-Blowing Snow

D-Drifting Snow

IC-Ice Crystals

W-Winds

BR-Mist