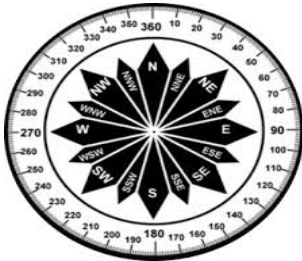


PHOENIX AIRFIELD 5 DAY PLANNING WEATHER

DATE	Friday, October 3, 2025				Saturday, October 4, 2025				Sunday, October 5, 2025				Monday, October 6, 2025				Tuesday, October 7, 2025				
SKY CONDITIONS	Partly Cloudy		Mostly Cloudy		Cloudy		Cloudy		Cloudy		Mostly Cloudy		Partly Cloudy		Partly Cloudy		Mostly Clear		Mostly Clear		
WEATHER & VISIBILITY	D								D												
TEMPERATURE																					
TRUE WINDS (KTS)	SSE 15-20	G35	NE 10-15		NE 8-12		VRB 4-7		S 15-20	G25	S 15-20	G25	S 15-20	G25	NE 8-12		VRB 4-7		VRB 4-7		
TIME (LOCAL)	00	06	12	18	00	06	12	18	00	06	12	18	00	06	12	18	00	06	12	18	00



UPDATED: Friday, October 3, 2025

ABOVE	Visibility > 7 miles, Ceilings ≥ 3000ft, Temps ≥ -40°C
MARGINAL	Vis < 7 mi but ≥ 3 mi, Ceilings < 3000ft but ≥ 1000ft
BELOW	Vis < 3 miles, Ceilings < 1000ft, Temps < -40°C

- B-Blowing Snow

BR-Mist

CIG - Ceiling

D-Drifting Snow

F- Fog

IC-Ice Crystals
- S-Snow

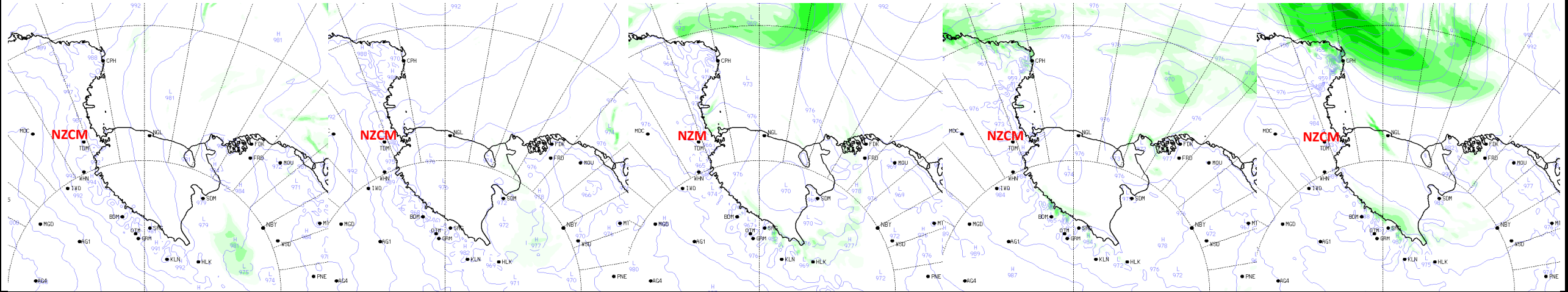
T - Temperature

VRB- Variable Winds

W-Winds

WC-Wind Chill

XW - Crosswinds



30

48

72

96

120