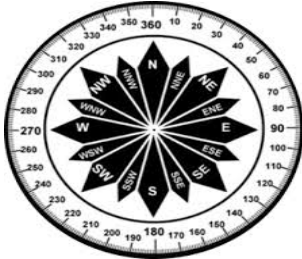


PHOENIX AIRFIELD 5 DAY PLANNING WEATHER

DATE	Saturday, October 4, 2025				Sunday, October 5, 2025				Monday, October 6, 2025				Tuesday, October 7, 2025				Wednesday, October 8, 2025													
SKY CONDITIONS	Mostly Cloudy		Mostly Cloudy		Mostly Cloudy		Partly Cloudy		Partly Cloudy		Partly Cloudy		Mostly Cloudy		Mostly Cloudy		Partly Cloudy		Partly Cloudy											
WEATHER & VISIBILITY	CIG												CIG, S																	
TEMPERATURE																														
TRUE WINDS (KTS)	VRB 4-7			NE 8-12			NE 8-12			SE 10-15			VRB 4-7			SE 8-12			SE 5-10			NNE 10-15			SSE 10-15			SSE 15-20		
TIME (LOCAL)	00	06	12	18	00	06	12	18	00	06	12	18	00	06	12	18	00	06	12	18	00	06	12	18	00					



UPDATED: Saturday, October 4, 2025

ABOVE	Visibility > 7 miles, Ceilings ≥ 3000ft, Temps ≥ -40°C
MARGINAL	Vis < 7 mi but ≥ 3 mi, Ceilings < 3000ft but ≥ 1000ft
BELOW	Vis < 3 miles, Ceilings < 1000ft, Temps < -40°C

- B-Blowing Snow

BR-Mist

CIG - Ceiling

D-Drifting Snow

F- Fog

IC-Ice Crystals
- S-Snow

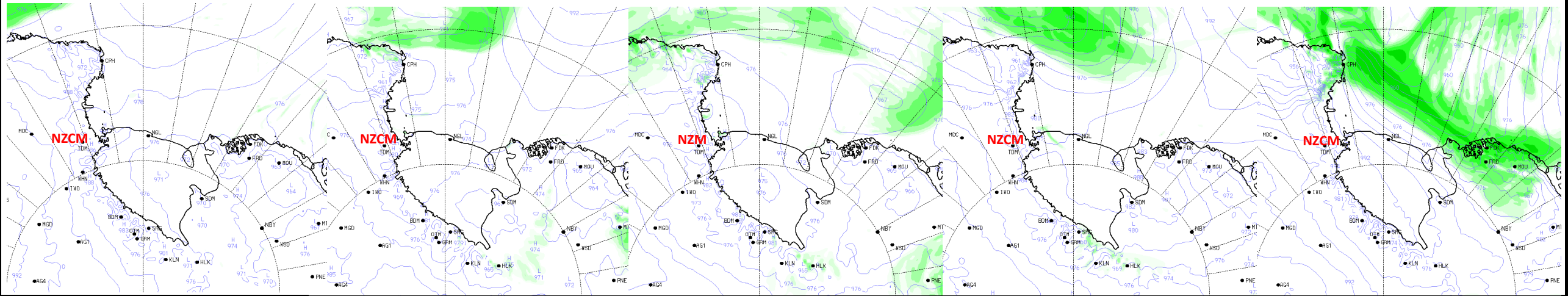
T - Temperature

VRB- Variable Winds

W-Winds

WC-Wind Chill

XW - Crosswinds



30

48

72

96

120