

FLEET OPS 5-DAY PLANNING WEATHER

DATE	Monday, November 10, 2025				Tuesday, November 11, 2025				Wednesday, November 12, 2025				Thursday, November 13, 2025				Friday, November 14, 2025							
SKY CONDITIONS	Partly Cloudy		Partly Cloudy		Mostly Cloudy		Mostly Cloudy		Cloudy		Cloudy		Mostly Cloudy		Mostly Cloudy		Mostly Cloudy		Mostly Cloudy					
WEATHER & VISIBILITY									S, B															
TEMPS (LOW/HIGH)	-21°C		-12°C		-20°C		-10°C		-20°C		-09°C		-18°C		-09°C		-22°C		-10°C					
TRUE WINDS (KTS)	NW 10-15		VRB 4-7		VRB 4-7		NE 5-10		SE 15-20		S 20-25 G35		NE 10-15		VRB 4-7		NE 5-10		NE 5-10					
WIND CHILL	-33°C		-19°C		-28°C		-18°C		-34°C		-20°C		-30°C		-15°C		-33°C		-18°C					
TIME (LOCAL)	00	06	12	18	00	06	12	18	00	06	12	18	00	06	12	18	00	06	12	18	00	06	12	18

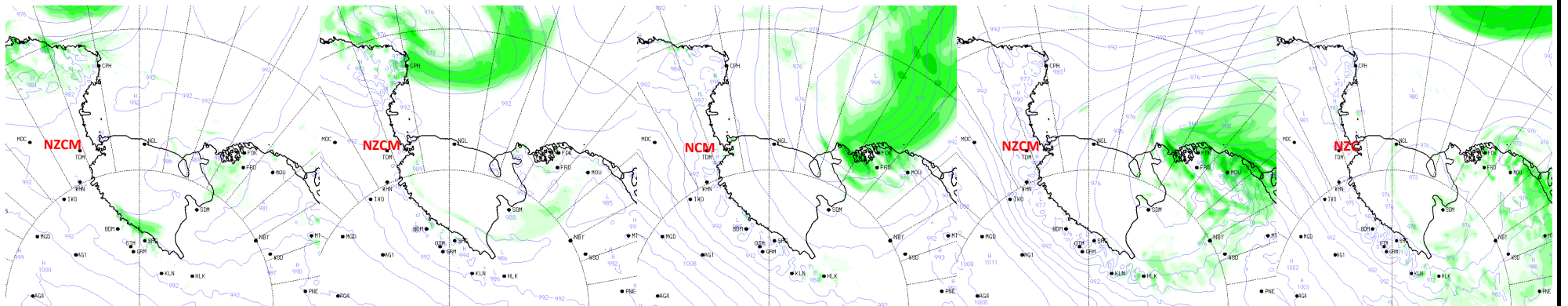


UPDATED: Monday, November 10, 2025

Forecast Covers All ICE Areas (McMurdo Ice Shelf Roads/Airfields/LDB Site)

ABOVE	Visibility \geq 1/4mi, Winds $<$ 48kt or Wind Chill warmer than -59°C
MARGINAL	Visibility $<$ 1/4 mile but \geq 100ft, Winds 48-55kt or Wind Chill -59°C to -73°C
BELOW	Vis $<$ 100ft, Winds $>$ 55kt or Wind Chill below -73°C

- B-Blowing Snow
- BR-Mist
- D-Drifting Snow
- F-Fog
- IC-Ice Crystals
- S-Snow
- VRB- Variable Winds
- W-Winds



30

48

72

96

120