

Saturday, 26 December 2020

**PALMER STATION WEATHER FORECAST INFORMATION**

**THIS INFORMATION IS FOR OFFICIAL USE ONLY  
AND IS LIMITED TO ACTIVITIES SPONSORED OR RECOGNIZED  
BY THE UNITED STATES ANTARCTIC PROGRAM**

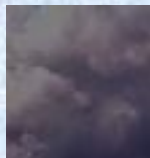
**REGIONAL WEATHER SUMMARY**

High pressure slips east with the relatively mild holiday weather. Expect deteriorating conditions this evening through tomorrow as low pressure and the associated frontal boundary meander across the Palmer area...

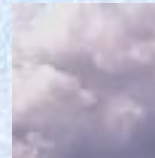
**Today**  
26 December



**Tonight**



**Tomorrow**  
27 December



**Sky:** Mostly Cloudy

**Visibility (SM):** Unrestricted

**Wind (kts):** E 7-15

**Max Temp:** 5°C / 41°F

**Min Wind Chill:** -4°C / 25°F

**Sky:** Cloudy

**Visibility (SM):** Unrestricted,  
occasional 2-4 rain

**Wind (kts):** E 15-30,  
becoming NW 7-12

**Min Temp:** 1°C / 34°F

**Min Wind Chill:** -4°C / 25°F

**Sky:** Cloudy

**Visibility (SM):** 1-3 snow,  
rain/snow mixed, fog,  
becoming Unrestricted

**Wind (kts):** NW 12-22

**Max Temp:** 2°C / 36°F

**Min Wind Chill:** -6°C / 21°F

**ASTRONOMICAL DATA**

Date	Sunrise	Sunset
26 December	2:27 a.m.	27/12:05 a.m.
27 December	2:28 a.m.	28/12:04 a.m.

**Forecaster:** *Al Hay*