

Monday, 19 April 2021

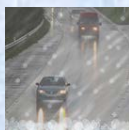
PALMER STATION WEATHER FORECAST INFORMATION

**THIS INFORMATION IS FOR OFFICIAL USE ONLY
AND IS LIMITED TO ACTIVITIES SPONSORED OR RECOGNIZED
BY THE UNITED STATES ANTARCTIC PROGRAM**

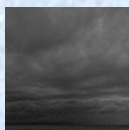
REGIONAL WEATHER SUMMARY

Rain and winds will decrease this morning as a low pressure system and its front cross the station early today. Temperatures will drop this morning with periods of mixed precip during the day. Today's break will be brief as the next system approaches overnight with winds and mixed precip returning by midday Tuesday.

Today
19 April



Tonight



Tomorrow
20 April



Sky: Cloudy

Visibility (SM): 1 to 3 in Rain. Becoming Unrestricted 3-5 in Sleet midday

Wind (kts): NNE 20-30, gusting 35, backing WNW 10-15 gusting 20 afternoon

Max Temp: 5°C / 41°F

Min Wind Chill: -7°C / 19°F

Sky: Cloudy

Visibility (SM): Unrestricted with periods of Rain mixed with Snow

Wind (kts): WNW 10-15 gusting 20, veering NNE'rly after midnight

Min Temp: -3°C / 27°F

Min Wind Chill: -11°C / 12°F

Sky: Cloudy

Visibility (SM): Unrestricted. Becoming ½ to 3 in Snow mixed with Rain midday

Wind (kts): NNE 20-30, gusting 45. Occasionally 30-40 gusting 55 afternoon

Max Temp: 0°C / 32°F

Min Wind Chill: -8°C / 18°F

ASTRONOMICAL DATA

Date	Sunrise	Sunset.
19 April	8:47 a.m.	5:41 p.m.
20 April	8:50 a.m.	5:38 p.m.

Forecaster: *Alan Stratton*