

Friday, 20 August 2021

PALMER STATION WEATHER FORECAST INFORMATION

**THIS INFORMATION IS FOR OFFICIAL USE ONLY
AND IS LIMITED TO ACTIVITIES SPONSORED OR RECOGNIZED
BY THE UNITED STATES ANTARCTIC PROGRAM**

REGIONAL WEATHER SUMMARY

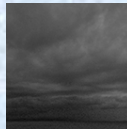
High pressure continues to recede toward Chile, allowing a series of troughs to approach the station from the Bellingshausen Sea. The first trough will pass early today with clouds increasing and a period of snow ending midday. Cloudy skies with periods of light snow will continue into the evening, with steady snow increasing through Saturday. Temperatures will warm a bit through the period.

Today

19 August



Tonight



Tomorrow

20 August



Sky: Mostly Cloudy to Cloudy

Visibility (SM): Unrestricted.
Occasionally 3-5 in light Snow.

Wind (kts): SW 8-13.
Occasionally Variable 5-10

Max Temp: -8°C / 18°F

Min Wind Chill: -22°C / -8°F

Sky: Cloudy

Visibility (SM): Unrestricted w/
a few flurries.

Wind (kts): NW-NE 7-12,
occasionally gusting 17

Min Temp: -14°C / 07°F

Min Wind Chill: -24°C / -11°F

Sky: Cloudy

Visibility (SM): Unrestricted
w/ light Snow. Becoming 2-4
in Snow. Briefly 1-2 in Snow.

Wind (kts): NW-NE 8-13,
occasionally gusting 20

Max Temp: -4°C / 25°F

Min Wind Chill: -16°C / 3°F

ASTRONOMICAL DATA

Date	Sunrise	Sunset.
20 August	09:00 a.m.	5:39 p.m.
21 August	08:57 a.m.	5:42 p.m.

Forecaster: *Alan Stratton*