

Friday, 27 August 2021

PALMER STATION WEATHER FORECAST INFORMATION

**THIS INFORMATION IS FOR OFFICIAL USE ONLY
AND IS LIMITED TO ACTIVITIES SPONSORED OR RECOGNIZED
BY THE UNITED STATES ANTARCTIC PROGRAM**

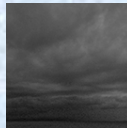
REGIONAL WEATHER SUMMARY

A low continues to spin west of the station in the Bellingshausen Sea bringing light snow that will taper off into light flurries overnight. A different low pressure system will storm in from the north tomorrow and slam the station with strong winds and heavy snow.

Today
27 August



Tonight



Tomorrow
28 August



Sky: Cloudy

Visibility (SM): 2-4 snow, occasionally unrestricted

Wind (kts): Variable 2-6 becoming N 8-12

Max Temp: -0°C / 31°F

Min Wind Chill: -8°C / 18°F

Sky: Cloudy

Visibility (SM): Unrestricted, 4-6 with occasional light flurries

Wind (kts): N-NE 8-12, occasional gusts to 18

Min Temp: -4°C / 25°F

Min Wind Chill: -19°C / -2°F

Sky: Cloudy

Visibility (SM): 2-4, occasionally ½-1 with snow and blowing snow

Wind (kts): N-NE 25-30 gusts to 40-45

Max Temp: -2°C / 28°F

Min Wind Chill: -13°C / 9°F

ASTRONOMICAL DATA

Date	Sunrise	Sunset.
27 August	08:36 a.m.	6:00 p.m.
28 August	08:29 a.m.	6:06 p.m.

Forecaster: *Chris Dunstone | Bob Michael*