

**Thursday, 30 December 2021**  
**PALMER STATION WEATHER FORECAST INFORMATION**

**THIS INFORMATION IS FOR OFFICIAL USE ONLY  
AND IS LIMITED TO ACTIVITIES SPONSORED OR RECOGNIZED  
BY THE UNITED STATES ANTARCTIC PROGRAM**

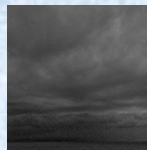
**REGIONAL WEATHER SUMMARY**

Low pressure moving eastward over the northern tip of the Peninsula this morning may bring an occasional period of light snow early this morning, otherwise decent weather expected as weak High pressure moves in over the area this afternoon into this evening. The next system approaches from the west-northwest on Friday evening, but the precipitation band associated with it remains just to the north of Anvers Island.

**Today**  
30 December



**Tonight**



**Tomorrow**  
31 December



**Sky:** Mostly Cloudy to Cloudy

**Visibility (SM):** Unrestricted, chance of light snow/rain early morning

**Wind (kts):** E-SE 15-35 w/ gusts to 45, becoming SE 15-25

**Max Temp:** 3°C / 37°F

**Min Wind Chill:** -8°C / 18°F

**Sky:** Mostly Cloudy to Cloudy

**Visibility (SM):** Unrestricted

**Wind (kts):** SE 10-20, becoming NE 10-20

**Min Temp:** 0°C / 32°F

**Min Wind Chill:** -6°C / 21°F

**Sky:** Mostly Cloudy to Partly Cloudy

**Visibility (SM):** Unrestricted

**Wind (kts):** NE 5-15, occasional 10-20 early

**Max Temp:** 3°C / 37°F

**Min Wind Chill:** -6°C / 21°F

**ASTRONOMICAL DATA**

Date	Sunrise	Sunset
30 December	2:35 a.m.	12:02 a.m.
31 December	2:37 a.m.	12:00 a.m.

**Forecaster:** *Joe Kramer*