

Thursday, 01 July 2021

PALMER STATION WEATHER FORECAST INFORMATION

**THIS INFORMATION IS FOR OFFICIAL USE ONLY
AND IS LIMITED TO ACTIVITIES SPONSORED OR RECOGNIZED
BY THE UNITED STATES ANTARCTIC PROGRAM**

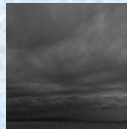
REGIONAL WEATHER SUMMARY

Low pressure remains anchored in the Bellingshausen Sea, producing northerly winds and periods of snow mixed with rain and sleet. The low will drift west Friday with precipitation decreasing and variable easterly winds .

Today
01 July



Tonight



Tomorrow
02 July



Sky: Cloudy

Visibility (SM): Unrestricted. Reduced 2-4 in Snow, Rain and Mist. Occasionally 3-5 in Snow and Fog. Becoming Unrestricted late afternoon

Wind (kts): NNW-NE 25-35 gusting 50. Becoming NW 13-18 gusting 25 afternoon

Max Temp: 1°C / 34°F

Min Wind Chill: -10°C / 14°F

Sky: Mostly Cloudy to Cloudy

Visibility (SM): Unrestricted. Occasionally 4-6 in mist before midnight

Wind (kts): N 13-18 gusting 25. Becoming NE 5-10 by morning

Min Temp: -3°C / 27°F

Min Wind Chill: -12°C / 10°F

Sky: Cloudy

Visibility (SM): Unrestricted. Occasionally 3 to 5 in Snow and Fog midday. Becoming Unrestricted late afternoon

Wind (kts): Variable 6-12

Max Temp: 0C / 32°F

Min Wind Chill: -12°C / 10°F

ASTRONOMICAL DATA

Date	Sunrise	Sunset.
01 July	11:20 a.m.	3:19 p.m.
02 July	11:19 a.m.	3:21 p.m.

Forecaster: *Alan Stratton*