

Saturday, 17 July 2021

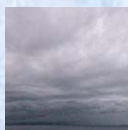
PALMER STATION WEATHER FORECAST INFORMATION

**THIS INFORMATION IS FOR OFFICIAL USE ONLY
AND IS LIMITED TO ACTIVITIES SPONSORED OR RECOGNIZED
BY THE UNITED STATES ANTARCTIC PROGRAM**

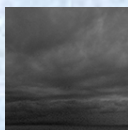
REGIONAL WEATHER SUMMARY

Low pressure is moving into the Bellingshausen Sea. Light north-northeast winds and cloudy skies will gradually increase into the evening. Winds will rapidly increase Sunday morning, with snow mixed with rain beginning midday Sunday and continuing into Monday morning.

Today
17 July



Tonight



Tomorrow
18 July



Sky: Cloudy

Visibility (SM): Unrestricted
w/ periods of light snow

Wind (kts):) : NNE 8-13

Max Temp: -4°C / 25°F

Min Wind Chill: -15°C / 5°F

Sky: Cloudy

Visibility (SM): Unrestricted

Wind (kts): N-NE 13-18, with
gusts to 30 after midnight

Min Temp: -4°C / 25°F

Min Wind Chill: -13°C / 9°F

Sky: Partly to Mostly Cloudy

Visibility (SM): Unrestricted.
Becoming 2-4 in Snow mixed
with Rain. Briefly ½ to 1 in
Snow and Sleet afternoon

Wind (kts): N-NE 30-40
gusting 55+ afternoon

Max Temp: 2C / 36°F

Min Wind Chill: -12°C / 10°F

ASTRONOMICAL DATA

Date	Sunrise	Sunset.
17 July	10:48 a.m.	3:57 p.m.
18 July	10:45 a.m.	3:59 p.m.

Forecaster: *Alan Stratton*