

Sunday, 25 July 2021

PALMER STATION WEATHER FORECAST INFORMATION

**THIS INFORMATION IS FOR OFFICIAL USE ONLY
AND IS LIMITED TO ACTIVITIES SPONSORED OR RECOGNIZED
BY THE UNITED STATES ANTARCTIC PROGRAM**

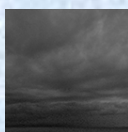
REGIONAL WEATHER SUMMARY

A front associated with low pressure in the Bellingshausen Sea is weakening as high pressure continues to hold strong in the Weddell Sea. Clouds will increase this afternoon as the front presses in, with periods of snow this afternoon and evening. Conditions will improve again by Monday morning as high pressure builds back in.

Today
25 July



Tonight



Tomorrow
26 July



Sky: Mostly Cloudy to Cloudy

Visibility (SM): Unrestricted.
Occasionally 3-5 in Snow
afternoon

Wind (kts): NE 8-13.
Occasionally Variable 5-10.

Max Temp: -4°C / 25°F

Min Wind Chill: -13°C / 9°F

Sky: Cloudy to Mostly Cloudy

Visibility (SM): Unrestricted

Wind (kts): NE 5-10

Min Temp: -11C / 12°F

Min Wind Chill: -18°C / 0°F

Sky: Partly to Mostly Cloudy

Visibility (SM): Unrestricted

Wind (kts): Variable 5-10

Max Temp: -5C / 23°F

Min Wind Chill: -13°C / 9°F

ASTRONOMICAL DATA

Date	Sunrise	Sunset.
25 July	10:25 a.m.	4:20 p.m.
26 July	10:22 a.m.	4:23 p.m.

Forecaster: *Alan Stratton*