

Thursday, 29 July 2021

PALMER STATION WEATHER FORECAST INFORMATION

**THIS INFORMATION IS FOR OFFICIAL USE ONLY
AND IS LIMITED TO ACTIVITIES SPONSORED OR RECOGNIZED
BY THE UNITED STATES ANTARCTIC PROGRAM**

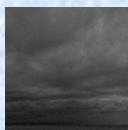
REGIONAL WEATHER SUMMARY

Low pressure in the Bellingshausen Sea will dominate the forecast for the next several days. Cloudy skies with waves of snow, occasionally mixed with sleet and rain, will dominate the outlook. Winds will vary in direction and strength significantly as well, although peak gusts are not expected to be extreme; (by Palmer standards, anyway).

Today
29 July



Tonight



Tomorrow
30 July



Sky: Cloudy

Visibility (SM): Unrestricted.
Occasionally 1-3 in Snow mixed
with Sleet and Mist

Wind (kts): NE 15-20 w/
occasional gusts to 30.
Occasionally Variable 5-15.

Max Temp: 1°C / 34°F

Min Wind Chill: -9°C / 16°F

Sky: Cloudy

Visibility (SM): Unrestricted.
Occasionally 3-5 in Snow

Wind (kts): NE-E 15-25
gusting 20-30

Min Temp: -3C / 28°F

Min Wind Chill: -13°C / 9°F

Sky: Cloudy

Visibility (SM): Unrestricted.
Occasionally 3-5 in Snow

Wind (kts): SW 10-15 gusting
20-25

Max Temp: -3C / 32°F

Min Wind Chill: -15°C / 5°F

ASTRONOMICAL DATA

Date	Sunrise	Sunset.
29 July	10:13 a.m.	4:32 p.m.
30 July	10:10 a.m.	4:35 p.m.

Forecaster: *Alan Stratton*