

Wednesday, 2 June 2021

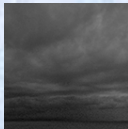
PALMER STATION WEATHER FORECAST INFORMATION

**THIS INFORMATION IS FOR OFFICIAL USE ONLY
AND IS LIMITED TO ACTIVITIES SPONSORED OR RECOGNIZED
BY THE UNITED STATES ANTARCTIC PROGRAM**

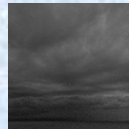
REGIONAL WEATHER SUMMARY

High pressure remains fixed in the Bellingshausen Sea bringing Cloudy skies and occasional periods of fog to the region. Light southerly winds will prevail during the period.

Today
2 June



Tonight



Tomorrow
3 June



Sky: Mostly Cloudy to Cloudy

Visibility (SM): Unrestricted,
with periods 3-5 in fog

Wind (kts): SW 5-10

Max Temp: -3°C / 27°F

Min Wind Chill: -15°C / 5°F

Sky: Mostly Cloudy to Cloudy

Visibility (SM): Unrestricted,
with periods 3-5 in fog

Wind (kts): Variable 5-10

Min Temp: -8°C / 18°F

Min Wind Chill: -16°C / 3°F

Sky: Mostly Cloudy to Cloudy

Visibility (SM): Unrestricted,
with periods 3-5 in fog

Wind (kts): Variable 5-10.
Becoming SW 8-13 by evening

Max Temp: -4°C / 25°F

Min Wind Chill: -16°C / 3°F

ASTRONOMICAL DATA

Date	Sunrise	Sunset.
2 June	10:59 a.m.	3:28 p.m.
3 June	11:01 a.m.	3:26 p.m.

Forecaster: *Alan Stratton*