

Friday, 4 June 2021

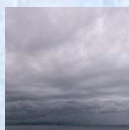
**PALMER STATION WEATHER FORECAST INFORMATION**

**THIS INFORMATION IS FOR OFFICIAL USE ONLY  
AND IS LIMITED TO ACTIVITIES SPONSORED OR RECOGNIZED  
BY THE UNITED STATES ANTARCTIC PROGRAM**

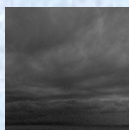
**REGIONAL WEATHER SUMMARY**

High pressure continues to hang tough in the Bellingshausen Sea. Light southwest, through west winds, with cloudy skies and brief periods of light snow and mist will continue with few breaks through late weekend.

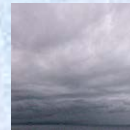
**Today**  
4 June



**Tonight**



**Tomorrow**  
5 June



**Sky:** Mostly Cloudy to Cloudy

**Visibility (SM):** Unrestricted, with periods 4-6 in light snow and mist

**Wind (kts):** SW 8-13

**Max Temp:** -5°C / 25°F

**Min Wind Chill:** -10°C / 14°F

**Sky:** Mostly Cloudy to Cloudy

**Visibility (SM):** Unrestricted, with periods 4-6 in light snow and mist

**Wind (kts):** SW 5-10

**Min Temp:** -7°C / 19°F

**Min Wind Chill:** -15°C / 5°F

**Sky:** Mostly Cloudy to Cloudy

**Visibility (SM):** Unrestricted, with periods 4-6 in light snow and mist

**Wind (kts):** SW 5-10

**Max Temp:** -4°C / 25°F

**Min Wind Chill:** -10°C / 14°F

**ASTRONOMICAL DATA**

Date	Sunrise	Sunset.
4 June	11:04 a.m.	3:24 p.m.
5 June	11:06 a.m.	3:22 p.m.

**Forecaster:** *Alan Stratton*