

Sunday, 13 June 2021

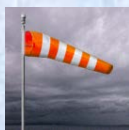
PALMER STATION WEATHER FORECAST INFORMATION

**THIS INFORMATION IS FOR OFFICIAL USE ONLY
AND IS LIMITED TO ACTIVITIES SPONSORED OR RECOGNIZED
BY THE UNITED STATES ANTARCTIC PROGRAM**

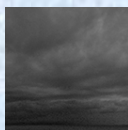
REGIONAL WEATHER SUMMARY

A series of low pressure centers will track southeast through the Bellingshausen Sea High into the southern Peninsula producing variable conditions as the associated fronts and troughs pass over the northern Peninsula

Today
12 June



Tonight



Tomorrow
13 June



Sky: Cloudy

Visibility (SM): Unrestricted.
Occasionally 4-6 in Snow and Sleet

Wind (kts): N-NE 20-25
gusting 35

Max Temp: 0°C / 32°F

Min Wind Chill: -9°C / 16°F

Sky: Cloudy

Visibility (SM): Unrestricted.
Occasionally 4-6 in Snow

Wind (kts): NE 13-18 gusting
30.

Min Temp: -3°C / 27°F

Min Wind Chill: -15°C / 5°F

Sky: Cloudy

Visibility (SM): Unrestricted.
Occasionally 2-4 in Snow

Wind (kts): N-NE 10-15
gusting 25. Becoming SW 8-13

Max Temp: -2°C / 28°F

Min Wind Chill: -10°C / 14°F

ASTRONOMICAL DATA

Date	Sunrise	Sunset.
13 June	11:20 a.m.	3:12 p.m.
14 June	11:21 a.m.	3:11 p.m.

Forecaster: *Alan Stratton*