

Wednesday, 23 June 2021

PALMER STATION WEATHER FORECAST INFORMATION

**THIS INFORMATION IS FOR OFFICIAL USE ONLY
AND IS LIMITED TO ACTIVITIES SPONSORED OR RECOGNIZED
BY THE UNITED STATES ANTARCTIC PROGRAM**

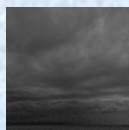
REGIONAL WEATHER SUMMARY

A low pressure circulation is crossing the region bringing snow and sleet this morning. Weak ridging will follow this afternoon, bringing lighter winds and diminishing snow by evening.

Today
23 June



Tonight



Tomorrow
24 June



Sky: Cloudy

Visibility (SM): Unrestricted.
Occasionally 2-4 in Snow
mixed with Sleet.

Wind (kts): NNE 13-18,
gusting 20

Max Temp: -2°C / 28°F

Min Wind Chill: -12°C / 10°F

Sky: Cloudy to Mostly Cloudy

Visibility (SM): Unrestricted.
Occasionally 4-6 in Snow
ending early evening

Wind (kts): N 13-18, gusting
20

Min Temp: -4°C / 25°F

Min Wind Chill: -12°C / 10°F

Sky: Mostly Cloudy to Cloudy

Visibility (SM): Unrestricted

Wind (kts): N-NE 8-12.
Becoming NW 15-22 gusting
30 late afternoon

Max Temp: -2°C / 28°F

Min Wind Chill: -14°C / 7°F

ASTRONOMICAL DATA

Date	Sunrise	Sunset.
23 June	11:26 a.m.	3:10 p.m.
24 June	11:26 a.m.	3:11 p.m.

Forecaster: *Alan Stratton*