

Tuesday, 29 June 2021

PALMER STATION WEATHER FORECAST INFORMATION

**THIS INFORMATION IS FOR OFFICIAL USE ONLY
AND IS LIMITED TO ACTIVITIES SPONSORED OR RECOGNIZED
BY THE UNITED STATES ANTARCTIC PROGRAM**

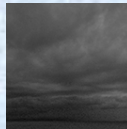
REGIONAL WEATHER SUMMARY

High pressure in the SW Atlantic is weakening while low pressure remains anchored in the Bellingshausen Sea, producing NNW winds and periods of snow mixed with rain and sleet. Cloud will lift with precipitation ending briefly Tuesday afternoon into early Wednesday before returning Wednesday morning.

Today
29 June



Tonight



Tomorrow
30 June



Sky: Cloudy

Visibility (SM): Unrestricted.
Reduced 3-5 in Snow, Rain and Sleet ending late afternoon

Wind (kts): W-NW 15-20
gusting 25. Becoming NE 10-15
afternoon

Max Temp: 1°C / 34°F

Min Wind Chill: -8°C / 18°F

Sky: Cloudy

Visibility (SM): Unrestricted

Wind (kts): NE 10-15.
Occasionally Variable 3-8 mid-
evening. Becoming NE 18-23
gusting 30 overnight

Min Temp: -1°C / 30°F

Min Wind Chill: -12°C / 10°F

Sky: Cloudy

Visibility (SM): Unrestricted.
Reduced 3-5 in Snow, Rain and
Sleet. Occasionally 1 to 2 in
Snow and Sleet

Wind (kts): NW-NE 25-35
gusting 50. Becoming N 18-25
gusting 35 by evening.

Max Temp: -1C / 30°F

Min Wind Chill: -10°C / 14°F

ASTRONOMICAL DATA

Date	Sunrise	Sunset.
29 June	11:22 a.m.	3:16 p.m.
30 June	11:21 a.m.	3:18 p.m.

Forecaster: *Alan Stratton*