

Wednesday, 25 November 2021
PALMER STATION WEATHER FORECAST INFORMATION

THIS INFORMATION IS FOR OFFICIAL USE ONLY
AND IS LIMITED TO ACTIVITIES SPONSORED OR RECOGNIZED
BY THE UNITED STATES ANTARCTIC PROGRAM

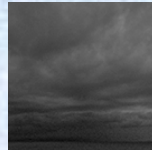
REGIONAL WEATHER SUMMARY

Low pressure settling into the Bellingshausen Sea will drag the tail end of a frontal boundary through this evening with increased clouds, a chance of light snow, and higher wind. Conditions ease tomorrow before a stronger wave crashes the peninsula by evening...And have a bountiful Thanksgiving!

Today
25 November



Tonight



Tomorrow
26 November



Sky: Partly Cloudy,
occasionally Mostly Cloudy

Visibility (SM): Unrestricted

Wind (kts): E-SE 5, becoming
NE 6-12

Max Temp: 2°C / 36°F

Min Wind Chill: -6°C / 21°F

Sky: Cloudy

Visibility (SM): Unrestricted,
chance of light snow early
evening

Wind (kts): NE 15-30,
becoming NW 10-15 by
morning

Temp: -1°C / 30°F

Min Wind Chill: -8°C / 18°F

Sky: Cloudy, occasionally
Mostly Cloudy

Visibility (SM): Unrestricted,
chance of light snow early
morning; 2-4 snow overnight

Wind (kts): NW 10-15,
becoming NE 15-25 by
evening; N-NE 25-40 overnight

Max Temp: 3°C / 37°F

Min Wind Chill: -6°C / 21°F

ASTRONOMICAL DATA

Date	Sunrise	Sunset.
25 November	3:13 a.m.	10:55 p.m.
26 November	3:10 a.m.	10:59 p.m.

Forecaster: *Al Hay*