

Friday, 26 November 2021

PALMER STATION WEATHER FORECAST INFORMATION

**THIS INFORMATION IS FOR OFFICIAL USE ONLY
AND IS LIMITED TO ACTIVITIES SPONSORED OR RECOGNIZED
BY THE UNITED STATES ANTARCTIC PROGRAM**

REGIONAL WEATHER SUMMARY

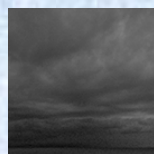
A vigorous wave of low pressure crashes the peninsula late afternoon, early evening with high wind and precipitation. The windy weather festivities will continue through tomorrow with the addition of snow and fog dreariness as the culprit low slides into the Weddell Sea south of Palmer Station...

Today

26 November

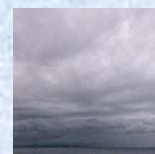


Tonight



Tomorrow

27 November



Sky: Cloudy, occasionally
Mostly Cloudy

Visibility (SM): Unrestricted,
chance of snow late afternoon

Wind (kts): NW-N 15-20,
becoming N-NE 20-30

Max Temp: 2°C / 36°F

Min Wind Chill: -8°C / 18°F

Sky: Cloudy

Visibility (SM): 2-4 snow, fog,
occasionally Unrestricted

Wind (kts): NE 25-45,
becoming NW-N 15-25

Temp: -1°C / 30°F

Min Wind Chill: -9°C / 16°F

Sky: Cloudy

Visibility (SM): 2-4 snow, fog

Wind (kts): NW 20-30, easing
overnight

Max Temp: 0°C / 32°F

Min Wind Chill: -10°C / 14°F

ASTRONOMICAL DATA

Date	Sunrise	Sunset.
26 November	3:10 a.m.	10:59 p.m.
27 November	3:07 a.m.	11:03 p.m.

Forecaster: *Al Hay*