

Sunday, 24 October 2021

PALMER STATION WEATHER FORECAST INFORMATION

**THIS INFORMATION IS FOR OFFICIAL USE ONLY
AND IS LIMITED TO ACTIVITIES SPONSORED OR RECOGNIZED
BY THE UNITED STATES ANTARCTIC PROGRAM**

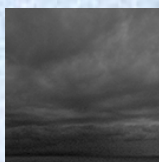
REGIONAL WEATHER SUMMARY

Squirrelly winds continue through tomorrow morning when the weak low pressure culprit is finally dumped into the Weddell Sea from an advancing ridge of high pressure...

Today
24 October



Tonight



Tomorrow
25 October



Sky: Cloudy

Visibility (SM): Unrestricted,
occasional 1-3 snow

Wind (kts): NE 7-12,
becoming W-NW 8-18

Max Temp: -2°C / 28°F

Min Wind Chill: -9°C / 16°F

Sky: Cloudy

Visibility (SM): Unrestricted,
light snow, fog by morning

Wind (kts): NE-E 7-12,
becoming NW 5-10

Min Temp: -3°C / 27°F

Min Wind Chill: -9°C / 16°F

Sky: Cloudy

Visibility (SM): 1-3 snow, fog,
occasionally Unrestricted

Wind (kts): W-SW 7-12,
becoming W 12-22 by evening

Max Temp: -2°C / 28°F

Min Wind Chill: -9°C / 16°F

ASTRONOMICAL DATA

Date	Sunrise	Sunset.
24 October	5:04 a.m.	8:57 p.m.
25 October	5:01 a.m.	9:01 p.m.

Forecaster: *Al Hay*