

Monday, 25 October 2021

**PALMER STATION WEATHER FORECAST INFORMATION**

**THIS INFORMATION IS FOR OFFICIAL USE ONLY  
AND IS LIMITED TO ACTIVITIES SPONSORED OR RECOGNIZED  
BY THE UNITED STATES ANTARCTIC PROGRAM**

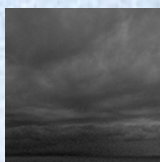
**REGIONAL WEATHER SUMMARY**

Dreary westerlies break brightly tomorrow until a right proper frontal boundary gets whipped across the peninsula by low pressure rotating south-to-southwest in the Bellingshausen Sea. Expect an abrupt wind increase late afternoon into evening with reduced visibility in snow...

**Today**  
25 October



**Tonight**



**Tomorrow**  
26 October



**Sky:** Cloudy

**Visibility (SM):** Unrestricted,  
occasional light snow

**Wind (kts):** W 6-12

**Max Temp:** -2°C / 28°F

**Min Wind Chill:** -9°C / 16°F

**Sky:** Cloudy

**Visibility (SM):** Unrestricted,  
occasional light snow

**Wind (kts):** W 6-12

**Min Temp:** -4°C / 25°F

**Min Wind Chill:** -9°C / 16°F

**Sky:** Mostly Cloudy, becoming  
Cloudy by evening

**Visibility (SM):** Unrestricted,  
becoming 1-3 snow by evening

**Wind (kts):** N-NE 7-15,  
increasing to NE-E 35-55 by  
evening

**Max Temp:** -1°C / 30°F

**Min Wind Chill:** -12°C / 10°F

**ASTRONOMICAL DATA**

Date	Sunrise	Sunset.
25 October	5:01 a.m.	9:01 p.m.
26 October	4:58 a.m.	9:04 p.m.

**Forecaster:** *Al Hay*