

Thursday, 28 October 2021

PALMER STATION WEATHER FORECAST INFORMATION

**THIS INFORMATION IS FOR OFFICIAL USE ONLY
AND IS LIMITED TO ACTIVITIES SPONSORED OR RECOGNIZED
BY THE UNITED STATES ANTARCTIC PROGRAM**

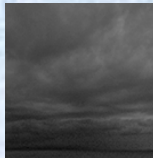
REGIONAL WEATHER SUMMARY

Headline reads "Bad Weather Day To Get Worse" as low pressure tracking to the south slaps the Palmer area with a frontal boundary by afternoon. Sources say wind speeds will be in the 30's and 40's, and the station may see some straight rain today before turning back to snow overnight. Further investigation indicates wind subsiding by midnight, and low clouds lingering through morning with a chance of fog...

Today
28 October



Tonight



Tomorrow
29 October



Sky: Cloudy

Visibility (SM): Unrestricted, light snow, becoming 2-4 rain, rain/snow mixed

Wind (kts): NW-N 15-30, becoming NW-NE 28-42

Max Temp: 2°C / 36°F

Min Wind Chill: -9°C / 16°F

Sky: Cloudy

Visibility (SM): Unrestricted, occasional 3-5 rain/snow mixed becoming snow

Wind (kts): NW 20-35, becoming NW-NE 6-12 after midnight

Min Temp: -2°C / 28°F

Min Wind Chill: -10°C / 14°F

Sky: Cloudy becoming Mostly Cloudy

Visibility (SM): Unrestricted, chance of light snow, fog

Wind (kts): SW 6-12, becoming NW 8-18 by evening

Max Temp: -1°C / 30°F

Min Wind Chill: -8°C / 18°F

ASTRONOMICAL DATA

Date	Sunrise	Sunset.
28 October	4:50 a.m.	9:11 p.m.
29 October	4:47 a.m.	9:14 p.m.

Forecaster: *Al Hay*