

Tuesday, 12 April 2022

**PALMER STATION WEATHER FORECAST INFORMATION**

**THIS INFORMATION IS FOR OFFICIAL USE ONLY  
AND IS LIMITED TO ACTIVITIES SPONSORED OR RECOGNIZED  
BY THE UNITED STATES ANTARCTIC PROGRAM**

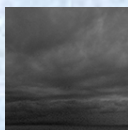
**REGIONAL WEATHER SUMMARY**

A strong low pressure center roars rather rapidly through the Drake today, with the center passing in close proximity to Palmer. Plentiful precipitation and powerful winds result, but both should die down overnight, although periodic snow will persist tomorrow.

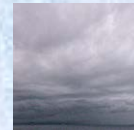
**Today**  
12 April



**Tonight**



**Tomorrow**  
13 April



**Sky:** Mostly Cloudy

**Visibility (SM):** Unrestricted,  
occasional 3-5 in snow

**Wind (kts):** NE 25-35 gust 55

**Max Temp:** 2°C / 35°F

**Min Wind Chill:** -9°C / 16°F

**Sky:** Cloudy

**Visibility (SM):** Unrestricted,  
occasional light snow

**Wind (kts):** NE 15-25  
becoming light & variable

**Min Temp:** -1°C / 31°F

**Min Wind Chill:** -10°C / 14°F

**Sky:** Mostly Cloudy

**Visibility (SM):** Unrestricted,  
occasional light snow

**Wind (kts):** Variable 5-10

**Max Temp:** 1°C / 33°F

**Min Wind Chill:** -6°C / 21°F

**ASTRONOMICAL DATA**

Date	Sunrise	Sunset
12 April	08:22 a.m.	6:10 p.m.
13 April	08:25 a.m.	6:07 p.m.

**Forecaster:** *Bob Michael*