

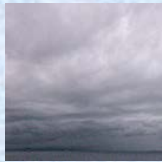
**Monday, 26 December 2022**  
**PALMER STATION WEATHER FORECAST INFORMATION**

**THIS INFORMATION IS FOR OFFICIAL USE ONLY  
AND IS LIMITED TO ACTIVITIES SPONSORED OR RECOGNIZED  
BY THE UNITED STATES ANTARCTIC PROGRAM**

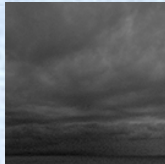
**REGIONAL WEATHER SUMMARY**

An incoming low pressure system is actually going to fall apart today as it approaches the Antarctic Peninsula. As a result, the forecast will be dominated by fairly light winds, some on-and-off rain, cloudy skies, and a bit of mist.

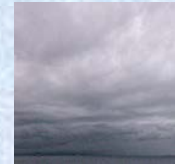
**Today**  
26 December



**Tonight**



**Tomorrow**  
27 December



**Sky:** Cloudy

**Visibility (SM):** Unrestricted, occasionally 4 – 6 due to light rain and mist

**Wind (kts):** Light and variable

**Max Temp:** 1°C / 34°F

**Min Wind Chill:** -4°C / 25°F

**Sky:** Cloudy

**Visibility (SM):** Unrestricted, occasionally 4 – 6 due to light rain and mist

**Wind (kts):** Light and variable

**Min Temp:** 0°C / 32°F

**Min Wind Chill:** -4°C / 25°F

**Sky:** Cloudy

**Visibility (SM):** Unrestricted, occasionally 4 – 6 due to light rain and mist

**Wind (kts):** Light and variable

**Max Temp:** 1°C / 34°F

**Min Wind Chill:** -4°C / 25°F

**ASTRONOMICAL DATA**

<b>Date</b>	<b>Sunrise</b>	<b>Sunset</b>
26 December	2:26 a.m.	12:07 a.m.
27 December	2:28 a.m.	12:06 a.m.

**Forecaster:** *John Meyer*