

Saturday, 31 December 2022

PALMER STATION WEATHER FORECAST INFORMATION

**THIS INFORMATION IS FOR OFFICIAL USE ONLY
AND IS LIMITED TO ACTIVITIES SPONSORED OR RECOGNIZED
BY THE UNITED STATES ANTARCTIC PROGRAM**

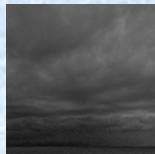
REGIONAL WEATHER SUMMARY

Weak low pressure continues to linger in the Bellingshausen Sea through the period. Cloudiness, light rain, and a bit of a breeze will round of December, and January will start off with bits of sun in between clouds, a light wind, and slightly warmer temperatures.

Today
31 December



Tonight



Tomorrow
1 January



Sky: Cloudy

Visibility (SM): Unrestricted, occasionally 4 – 6 due to light rain and mist

Wind (kts): NE 5-10

Max Temp: 3°C / 37°F

Min Wind Chill: -4°C / 25°F

Sky: Cloudy

Visibility (SM): Unrestricted, occasionally 4 – 6 due to light rain and mist

Wind (kts): NE 8-12

Min Temp: 1°C / 34°F

Min Wind Chill: -4°C / 25°F

Sky: Mostly Cloudy, becoming Partly Cloudy

Visibility (SM): Unrestricted, occasionally 4 – 6 due to light rain and mist

Wind (kts): Light and variable

Max Temp: 4°C / 39°F

Min Wind Chill: -2°C / 28°F

ASTRONOMICAL DATA

Date	Sunrise	Sunset
31 December	2:37 a.m.	12:01 a.m.
1 January	2:40 a.m.	11:57 a.m.

Forecaster: *John Meyer*