

Saturday, 5 February 2022

PALMER STATION WEATHER FORECAST INFORMATION

**THIS INFORMATION IS FOR OFFICIAL USE ONLY
AND IS LIMITED TO ACTIVITIES SPONSORED OR RECOGNIZED
BY THE UNITED STATES ANTARCTIC PROGRAM**

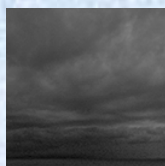
REGIONAL WEATHER SUMMARY

Frontal complex crashes the peninsula today with warm air and high wind. Expect early morning rain with warm frontal passage, and another bout of rain turning to snow overnight as the cold front pushes through. Fog, potentially dense, and light snow greet tomorrow morning, clearing by evening...

Today
5 February



Tonight



Tomorrow
6 February



Sky: Cloudy

Visibility (SM): Unrestricted, occasional morning rain

Wind (kts): NE 20-35, becoming NE-SE 25-45

Max Temp: 7°C / 45°F

Min Wind Chill: -2°C / 28°F

Sky: Cloudy

Visibility (SM): Unrestricted, becoming 1-3 rain, becoming ¼-1 fog, snow after midnight

Wind (kts): NE-SE 25-45, becoming W-NW 7-15

Min Temp: 0°C / 32°F

Min Wind Chill: -6°C / 21°F

Sky: Cloudy becoming Partly Cloudy by evening

Visibility (SM): ¼-1 fog, snow, becoming Unrestricted

Wind (kts): SW 12-25, becoming Variable 5

Max Temp: 2°C / 36°F

Min Wind Chill: -8°C / 18°F

ASTRONOMICAL DATA

Date	Sunrise	Sunset
5 February	4:50 a.m.	10:06 p.m.
6 February	4:54 a.m.	10:03 p.m.

Forecaster: *Al Hay*