

Monday, 14 February 2022
PALMER STATION WEATHER FORECAST INFORMATION

**THIS INFORMATION IS FOR OFFICIAL USE ONLY
AND IS LIMITED TO ACTIVITIES SPONSORED OR RECOGNIZED
BY THE UNITED STATES ANTARCTIC PROGRAM**

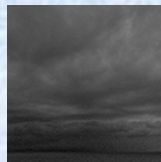
REGIONAL WEATHER SUMMARY

Low pressure advances into the area this afternoon through evening as a ridge of high pressure passes east early today. Expect strong winds overnight as a frontal boundary crashes the peninsula. Winds ease and skies break tomorrow as low pressure moves east...

Today
14 February



Tonight



Tomorrow
15 February



Sky: Cloudy, occasionally
Mostly Cloudy

Visibility (SM): Unrestricted,
occasional 3-5 light snow, fog
early; chance light rain by
evening

Wind (kts): SW 6-12,
becoming NE 12-22 by evening

Max Temp: 4°C / 39°F

Min Wind Chill: -4°C / 16°F

Sky: Cloudy

Visibility (SM): Unrestricted

Wind (kts): NE 12-22,
becoming NE-SE 25-45

Min Temp: 3°C / 37°F

Min Wind Chill: -6°C / 21°F

Sky: Mostly Cloudy,
occasionally Partly Cloudy

Visibility (SM): Unrestricted

Wind (kts): NE 22-35, easing
to NE-SE 7-15, occasional
Variable 4

Max Temp: 5°C / 41°F

Min Wind Chill: -6°C / 21°F

ASTRONOMICAL DATA

Date	Sunrise	Sunset
14 February	5:23 a.m.	9:34 p.m.
15 February	5:27 a.m.	9:30 p.m.

Forecaster: *Al Hay*