

Tuesday, 15 February 2022
PALMER STATION WEATHER FORECAST INFORMATION

**THIS INFORMATION IS FOR OFFICIAL USE ONLY
AND IS LIMITED TO ACTIVITIES SPONSORED OR RECOGNIZED
BY THE UNITED STATES ANTARCTIC PROGRAM**

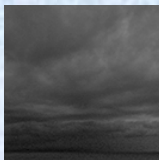
REGIONAL WEATHER SUMMARY

Breezy frontal boundary pushes through today with the associated low pressure center taking a more northern track east across the tip of the peninsula this evening. High pressure builds in tomorrow, calming the wind and scattering the skies...

Today
15 February



Tonight



Tomorrow
16 February



Sky: Cloudy

Visibility (SM): Unrestricted,
occasional 3-5 light rain

Wind (kts): NE-SE 15-25,
becoming NE 8-18

Max Temp: 3°C / 37°F

Min Wind Chill: -5°C / 23°F

Sky: Cloudy becoming Mostly
Cloudy

Visibility (SM): Unrestricted

Wind (kts): E 15-25, becoming
NE-E 10-15

Min Temp: 0°C / 32°F

Min Wind Chill: -6°C / 21°F

Sky: Mostly Cloudy,
occasionally Partly Cloudy

Visibility (SM): Unrestricted

Wind (kts): NE 7-12,
becoming Variable 5

Max Temp: 2°C / 36°F

Min Wind Chill: -6°C / 21°F

ASTRONOMICAL DATA

Date	Sunrise	Sunset
15 February	5:27 a.m.	9:30 p.m.
16 February	5:30 a.m.	9:27 p.m.

Forecaster: *Al Hay*