

Saturday, 19 February 2022
PALMER STATION WEATHER FORECAST INFORMATION

**THIS INFORMATION IS FOR OFFICIAL USE ONLY
 AND IS LIMITED TO ACTIVITIES SPONSORED OR RECOGNIZED
 BY THE UNITED STATES ANTARCTIC PROGRAM**

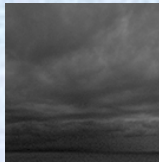
REGIONAL WEATHER SUMMARY

High pressure keeps the skies cloudy and winds breezy from the southwest today. Low pressure wheeling into the southern Bellingshausen Sea will push multiple frontal waves into the peninsula over the next few days starting overnight. Expect reduced visibility in snow and fog after midnight through tomorrow with precipitation becoming mixed to rain by evening...

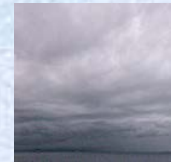
Today
19 February



Tonight



Tomorrow
20 February



ASTRONOMICAL DATA

| Date | Sunrise | Sunset |
|-------------|-----------|-----------|
| 19 February | 5:41 a.m. | 9:16 p.m. |
| 20 February | 5:44 a.m. | 9:12 p.m. |

Forecaster: *Al Hay*