

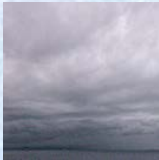
Wednesday, 23 February 2022  
PALMER STATION WEATHER FORECAST INFORMATION

THIS INFORMATION IS FOR OFFICIAL USE ONLY  
AND IS LIMITED TO ACTIVITIES SPONSORED OR RECOGNIZED  
BY THE UNITED STATES ANTARCTIC PROGRAM

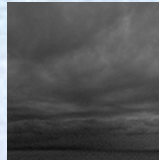
**REGIONAL WEATHER SUMMARY**

High pressure ridge moves east today, swinging moist southwest flow to the northwest...Fast moving wave of low pressure crashes the peninsula from the northwest by midnight with higher winds and a chance of mixed precipitation. Expect mild and dreary conditions tomorrow under weak, transient high pressure...

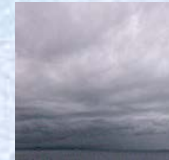
**Today**  
23 February



**Tonight**



**Tomorrow**  
24 February



**Sky:** Cloudy

**Visibility (SM):** Unrestricted, occasional 3-5 fog, light snow

**Wind (kts):** SW 8-18, becoming NW 8-18

**Max Temp:** 3°C / 37°F

**Min Wind Chill:** -6°C / 21°F

**Sky:** Cloudy

**Visibility (SM):** Unrestricted, occasional 1-3 snow, rain/snow mixed by midnight

**Wind (kts):** NW 12-22, becoming NW 7-15

**Min Temp:** 0°C / 32°F

**Min Wind Chill:** -6°C / 21°F

**Sky:** Cloudy

**Visibility (SM):** 1-3 fog, light snow, becoming Unrestricted

**Wind (kts):** SW-NW 6-12

**Max Temp:** 1°C / 34°F

**Min Wind Chill:** -6°C / 21°F

**ASTRONOMICAL DATA**

Date	Sunrise	Sunset
23 February	5:55 a.m.	9:01 p.m.
24 February	5:58 a.m.	8:58 p.m.

Forecaster: *Al Hay*