

**Thursday, 24 February 2022**  
**PALMER STATION WEATHER FORECAST INFORMATION**

**THIS INFORMATION IS FOR OFFICIAL USE ONLY  
AND IS LIMITED TO ACTIVITIES SPONSORED OR RECOGNIZED  
BY THE UNITED STATES ANTARCTIC PROGRAM**

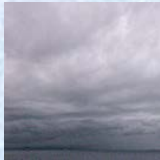
---

**REGIONAL WEATHER SUMMARY**

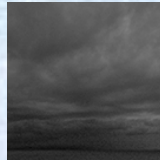
Weak, transient high pressure between systems brings mild conditions today with light wind and periods of lowered visibility in fog, light snow. Filling low pressure moving northeast in the Bellingshausen Sea to push breezy, warm frontal air into the area tomorrow with a chance of light precipitation...

**Today**

24 February

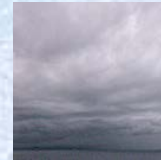


**Tonight**



**Tomorrow**

25 February



**Sky:** Cloudy

**Visibility (SM):** Unrestricted, occasional 2-4 fog, light snow

**Wind (kts):** Variable 4-7

**Max Temp:** 1°C / 34°F

**Min Wind Chill:** -4°C / 25°F

**Sky:** Cloudy

**Visibility (SM):** Unrestricted, occasional light snow

**Wind (kts):** NW 5-10, becoming NW-N 8-18

**Min Temp:** -1°C / 30°F

**Min Wind Chill:** -7°C / 19°F

**Sky:** Cloudy

**Visibility (SM):** Unrestricted, chance light precipitation

**Wind (kts):** N-NE 12-22

**Max Temp:** 3°C / 37°F

**Min Wind Chill:** -7°C / 19°F

**ASTRONOMICAL DATA**

Date	Sunrise	Sunset
24 February	5:58 a.m.	8:58 p.m.
25 February	6:01 a.m.	8:54 p.m.

**Forecaster:** *Al Hay*