

Monday, 28 February 2022
PALMER STATION WEATHER FORECAST INFORMATION

**THIS INFORMATION IS FOR OFFICIAL USE ONLY
AND IS LIMITED TO ACTIVITIES SPONSORED OR RECOGNIZED
BY THE UNITED STATES ANTARCTIC PROGRAM**

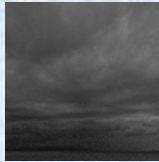
REGIONAL WEATHER SUMMARY

Dreary and mild through the forecast period as the northern peninsula sits under a col area of negligible wind/pressure gradient between circulations. Expect occasional light snow with periods of reduced visibility in fog...

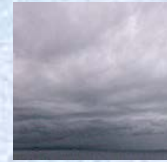
Today
28 February



Tonight



Tomorrow
1 March



Sky: Cloudy

Visibility (SM): Unrestricted, occasional light snow, becoming 3-5 fog

Wind (kts): N-NE 7-15, becoming Variable 5

Max Temp: 2°C / 36°F

Min Wind Chill: -5°C / 23°F

Sky: Cloudy

Visibility (SM): Unrestricted, occasional light snow

Wind (kts): Variable 5

Min Temp: -1°C / 30°F

Min Wind Chill: -4°C / 25°F

Sky: Cloudy

Visibility (SM): Unrestricted, becoming 3-5 fog, light snow

Wind (kts): Variable 5

Max Temp: 1°C / 34°F

Min Wind Chill: -4°C / 25°F

ASTRONOMICAL DATA

Date	Sunrise	Sunset
28 February	6:11 a.m.	8:43 p.m.
1 March	6:15 a.m.	8:39 p.m.

Forecaster: *Al Hay*