

Wednesday, 5 January 2022

PALMER STATION WEATHER FORECAST INFORMATION

**THIS INFORMATION IS FOR OFFICIAL USE ONLY
AND IS LIMITED TO ACTIVITIES SPONSORED OR RECOGNIZED
BY THE UNITED STATES ANTARCTIC PROGRAM**

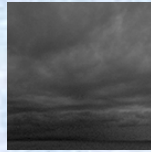
REGIONAL WEATHER SUMMARY

A weak area of troughing remains over the northern portion of the Palmer Peninsula this morning, keeping the likelihood of occasional periods of reduced visibility in fog into this afternoon, with relatively light winds. A weak ridge of High pressure works its way in from the northwest around midnight, remaining in control of the region until Thursday evening when the next Low pressure system approaches from the northwest. The precipitation band associated with this next Low remains north of Anvers Island until late Friday morning.

Today
5 January



Tonight



Tomorrow
6 January



Sky: Cloudy

Visibility (SM): Unrestricted,
w/ possible periods of 1-3 due to fog

Wind (kts): Variable 4-8,
occasional E 5-10

Max Temp: 4°C / 39°F

Min Wind Chill: -3°C / 27°F

Sky: Cloudy to Mostly Cloudy

Visibility (SM): Unrestricted,
w/ possible periods of 1-3 due to fog

Wind (kts): NW 5-10,
occasional Light / Variable

Min Temp: -1°C / 30°F

Min Wind Chill: -5°C / 23°F

Sky: Cloudy to Mostly Cloudy

Visibility (SM): Unrestricted,
possible periods of 1-3 due to fog

Wind (kts): Light / Variable

Max Temp: 3°C / 37°F

Min Wind Chill: -5°C / 23°F

ASTRONOMICAL DATA

Date	Sunrise	Sunset
5 January	2:53 a.m.	11:47 p.m.
6 January	2:56 a.m.	11:45 p.m.

Forecaster: *Joe Kramer*