

Thursday, 6 January 2022

PALMER STATION WEATHER FORECAST INFORMATION

**THIS INFORMATION IS FOR OFFICIAL USE ONLY
AND IS LIMITED TO ACTIVITIES SPONSORED OR RECOGNIZED
BY THE UNITED STATES ANTARCTIC PROGRAM**

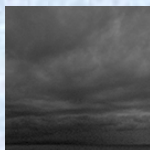
REGIONAL WEATHER SUMMARY

A weak area of ridging extends from the north down over Anvers Island today, keeping cloudy skies, light winds and the chance for some periodic reduced visibility in fog in the forecast. A frontal boundary associated with a Low moving in from the west-northwest begins to affect the local area mid-morning on Friday, bringing precipitation over the area once again, with occasional periods of reduced visibility expected in snow/fog into Saturday morning.

Today
6 January



Tonight



Tomorrow
7 January



Sky: Cloudy

Visibility (SM): Unrestricted,
w/ possible periods of 1-3 due to fog

Wind (kts): Light / Variable

Max Temp: 2°C / 36°F

Min Wind Chill: -5°C / 23°F

Sky: Cloudy to Mostly Cloudy

Visibility (SM): Unrestricted,
w/ possible periods of 1-3 due to fog

Wind (kts): Light / Variable,
occasional N-NE 6-12

Min Temp: -1°C / 30°F

Min Wind Chill: -6°C / 21°F

Sky: Cloudy

Visibility (SM): Unrestricted,
w/ periods of 3-5 rain / snow mixed

Wind (kts): Light / Variable,
becoming N-NE 15-25 w/
isolated gusts to 30

Max Temp: 4°C / 39°F

Min Wind Chill: -6°C / 21°F

ASTRONOMICAL DATA

Date	Sunrise	Sunset
6 January	2:56 a.m.	11:45 p.m.
7 January	3:00 a.m.	11:42 p.m.

Forecaster: *Joe Kramer*