

Friday, 7 January 2022

PALMER STATION WEATHER FORECAST INFORMATION

**THIS INFORMATION IS FOR OFFICIAL USE ONLY
AND IS LIMITED TO ACTIVITIES SPONSORED OR RECOGNIZED
BY THE UNITED STATES ANTARCTIC PROGRAM**

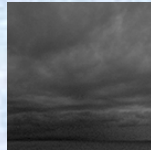
REGIONAL WEATHER SUMMARY

Low pressure in the Bellingshausen Sea to move a frontal boundary across the area today with increasing cloudiness, a rise in wind, and light snow to mixed precipitation by afternoon. A weak post-frontal trough should bring another wave of precipitation overnight into morning. Expect a good chance of restrictive fog towards evening tomorrow as high pressure builds in...

Today
7 January



Tonight



Tomorrow
8 January



Sky: Cloudy

Visibility (SM): Unrestricted, occasional 2-4 light snow, mixed precipitation by afternoon

Wind (kts): Variable 5, becoming N-NE 8-18

Max Temp: 3°C / 37°F

Min Wind Chill: -5°C / 23°F

Sky: Cloudy

Visibility (SM): Unrestricted, occasional 3-5 rain, mixed precipitation by midnight

Wind (kts): N-NE 8-18, becoming NE 5-10

Min Temp: 1°C / 34°F

Min Wind Chill: -5°C / 23°F

Sky: Cloudy

Visibility (SM): Unrestricted, occasional 3-5 rain, mixed precipitation, becoming ¼-2 fog by evening

Wind (kts): NE-E 5-10, becoming Variable 5

Max Temp: 2°C / 36°F

Min Wind Chill: -4°C / 25°F

ASTRONOMICAL DATA

Date	Sunrise	Sunset
7 January	3:00 a.m.	11:42 p.m.
8 January	3:03 a.m.	11:39 p.m.

Forecaster: *Al Hay*