

Friday, 28 January 2022
PALMER STATION WEATHER FORECAST INFORMATION

**THIS INFORMATION IS FOR OFFICIAL USE ONLY
 AND IS LIMITED TO ACTIVITIES SPONSORED OR RECOGNIZED
 BY THE UNITED STATES ANTARCTIC PROGRAM**

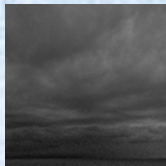
REGIONAL WEATHER SUMMARY

A ridge of High pressure remains over the area today keeping low, overcast skies with high humidity in place. A slightly strengthening Low digs into the Bellingshausen Sea region overnight tonight with a frontal boundary sweeping out ahead of it that begins pushing into the Anvers Island region by morning, bringing strengthened northeasterly winds and periods of reduced visibility in rain into Sunday. Temperatures remain cool today, but warm significantly on Saturday into the low 40's.

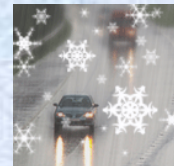
Today
28 January



Tonight



Tomorrow
29 January



Sky: Cloudy to Mostly Cloudy

Visibility (SM): Unrestricted, w/ fog in the area, periods of 1-3 possible

Wind (kts): SW 5-10, becoming Variable 3-8

Max Temp: 1°C / 34°F

Min Wind Chill: -4°C / 25°F

Sky: Mostly Cloudy becoming Cloudy

Visibility (SM): Unrestricted, w/ possible 2-4 in snow by morning

Wind (kts): Variable 3-8, becoming NE 6-12

Min Temp: 0°C / 32°F

Min Wind Chill: -2°C / 28°F

Sky: Cloudy

Visibility (SM): Unrestricted w/ light snow early morning, w/ periods of 2-4 in rain / fog

Wind (kts): NE 6-12, becoming 25-40 w/ gusts to 50

Max Temp: 6°C / 43°F

Min Wind Chill: -2°C / 28°F

ASTRONOMICAL DATA

Date	Sunrise	Sunset
28 January	4:20 a.m.	10:34 p.m.
29 January	4:24 a.m.	10:31 p.m.

Forecaster: *Joe Kramer*