

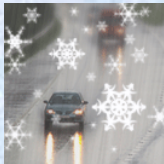
**Saturday, 29 January 2022**  
**PALMER STATION WEATHER FORECAST INFORMATION**

**THIS INFORMATION IS FOR OFFICIAL USE ONLY  
AND IS LIMITED TO ACTIVITIES SPONSORED OR RECOGNIZED  
BY THE UNITED STATES ANTARCTIC PROGRAM**

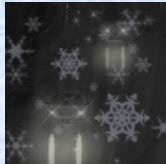
**REGIONAL WEATHER SUMMARY**

Low pressure moving in from the northwest this morning brings cloudy skies and periods of reduced visibility in snow / rain over the area into Monday, with strengthened wind speeds as well. Temperatures warm into the low 40's by midnight, and remain on the warmer side throughout the period.

**Today**  
29 January



**Tonight**



**Tomorrow**  
30 January



**Sky:** Cloudy

**Visibility (SM):** Unrestricted, w/ periods of 3-5 in snow, becoming rain

**Wind (kts):** Light / Variable, becoming NE 15-35 w/ gusts to 40

**Max Temp:** 6°C / 43°F

**Min Wind Chill:** -2°C / 28°F

**Sky:** Cloudy

**Visibility (SM):** Unrestricted, 4-6 in rain/snow mix after midnight

**Wind (kts):** N-NE 25-40 w/ gusts to 45, becoming N 15-25

**Min Temp:** 3°C / 37°F

**Min Wind Chill:** -3°C / 27°F

**Sky:** Cloudy

**Visibility (SM):** Unrestricted w/ periods of light rain, becoming 1-3 in rain/snow mix

**Wind (kts):** N-NE 10-20, occasional 20-30 w/ gusts to 40

**Max Temp:** 5°C / 41°F

**Min Wind Chill:** -4°C / 25°F

**ASTRONOMICAL DATA**

Date	Sunrise	Sunset
29 January	4:24 a.m.	10:31 p.m.
30 January	4:28 a.m.	10:28 p.m.

**Forecaster:** *Joe Kramer*